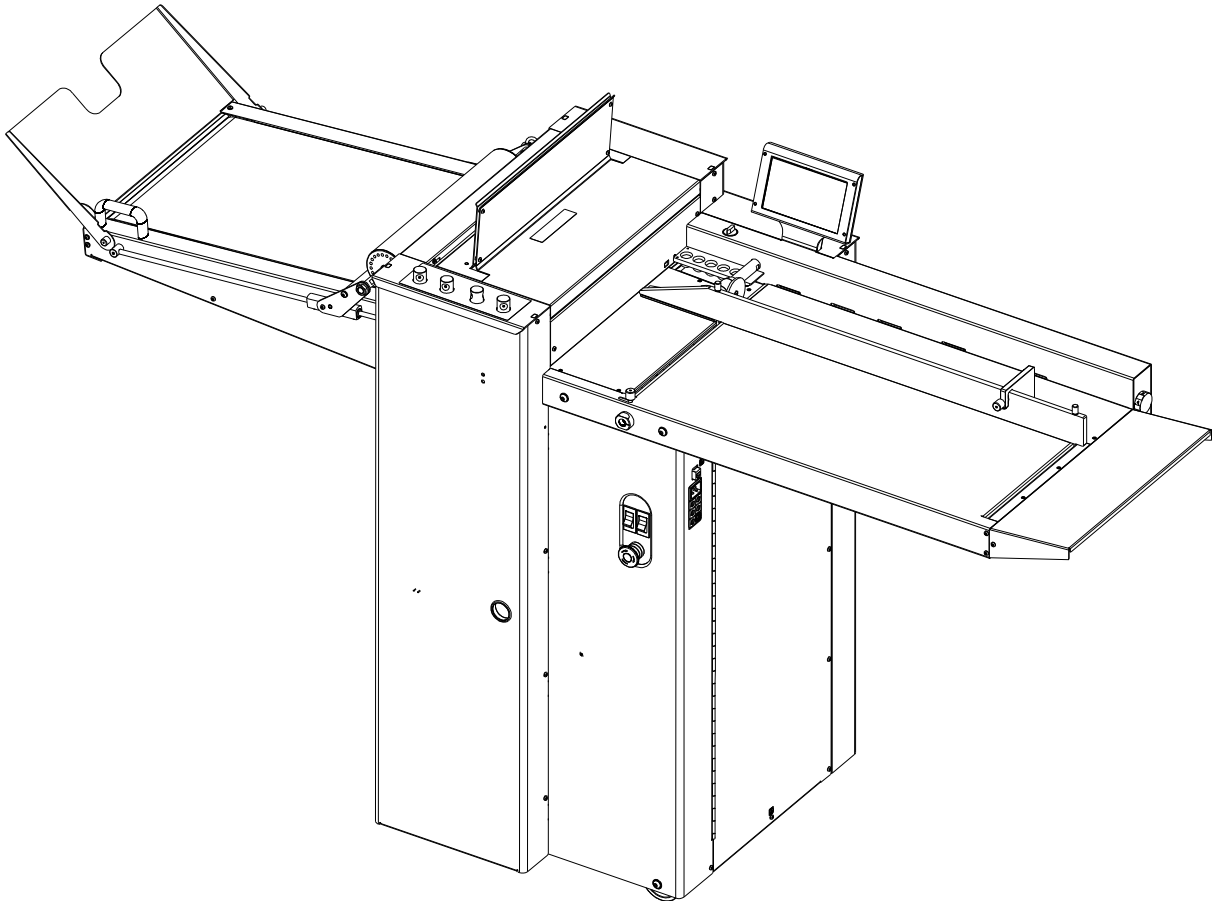




Digital Finishing for Digital Printers

morgana

DigiFold Pro



DOCUMENT CREASING / FOLDING MACHINE

ILLUSTRATED PARTS MANUAL

Morgana Systems Limited United Kingdom
Telephone: (01908) 608888 Facsimile: (01908) 692399
Website: www.morgana.co.uk

ISSUE 7 NOVEMBER 2011

174-026

morgana

DigiFold Pro

ILLUSTRATED PARTS MANUAL

The Illustrated Parts Manual has been designed to assist when selecting a part or assembly which may be required to service or repair your machine.

The index on page four lists all of the major assemblies in the order in which the machine is constructed.

The following page demonstrates how to recognise a part from a sub-assembly and shows the quantity contained within the major assembly.

The major assembly number and description is listed at the top of the page and should always be quoted when ordering parts or when seeking technical advice.

Before ordering parts confirm that the model number of the machine (listed at the top of page four) is identical to the number stamped on the specification plate. Whilst checking this, make a note of the serial number also stamped on the plate.

Some components will not be made available individually as they form part of a sub-assembly which may require specialist tools and knowledge to dismantle. The machine may not perform correctly if attempts are made to repair sub-assemblies of this type.

NOTE....

**ALWAYS READ THE OPERATORS MANUAL BEFORE MAKING ANY
ADJUSTMENTS TO YOUR MACHINE AND ALWAYS DISCONNECT THE POWER
SUPPLY BEFORE REMOVING ANY COVERS.**

USING THIS MANUAL.....

CIRCLED ITEM NUMBERS IN LISTS & ON ILLUSTRATIONS INDICATE SUB ASSEMBLIES.

ITEMS LISTED ARE AVAILABLE INDIVIDUALLY AS SPARE PARTS.

10			
11	92 - 039	1	SLIDE FRAME ASSEMBLY - Low
12	95-046	1	SWITCH ASSEMBLY - Set-up
13	95-047	1	SWITCH ASSEMBLY - Feed
14	95-049	1	SWITCH ASSEMBLY - Rotary Setting Dial
15	95-058	1	SWITCH ASSEMBLY - Push Button 1
16	95-059	1	SWITCH ASSEMBLY - Push Button 2
17	95-060	1	SWITCH ASSEMBLY - Push Button 3
18	95-064	1	SWITCH ASSEMBLY - Push Button 4
19			
30			

QUANTITY PER ASSEMBLY

NOTE....

Some sections have footnotes to explain various aspects of the parts lists and accompanying illustrations. They may also include warnings about the fitting of parts, their removal, or the need to use special tools.

TIP....

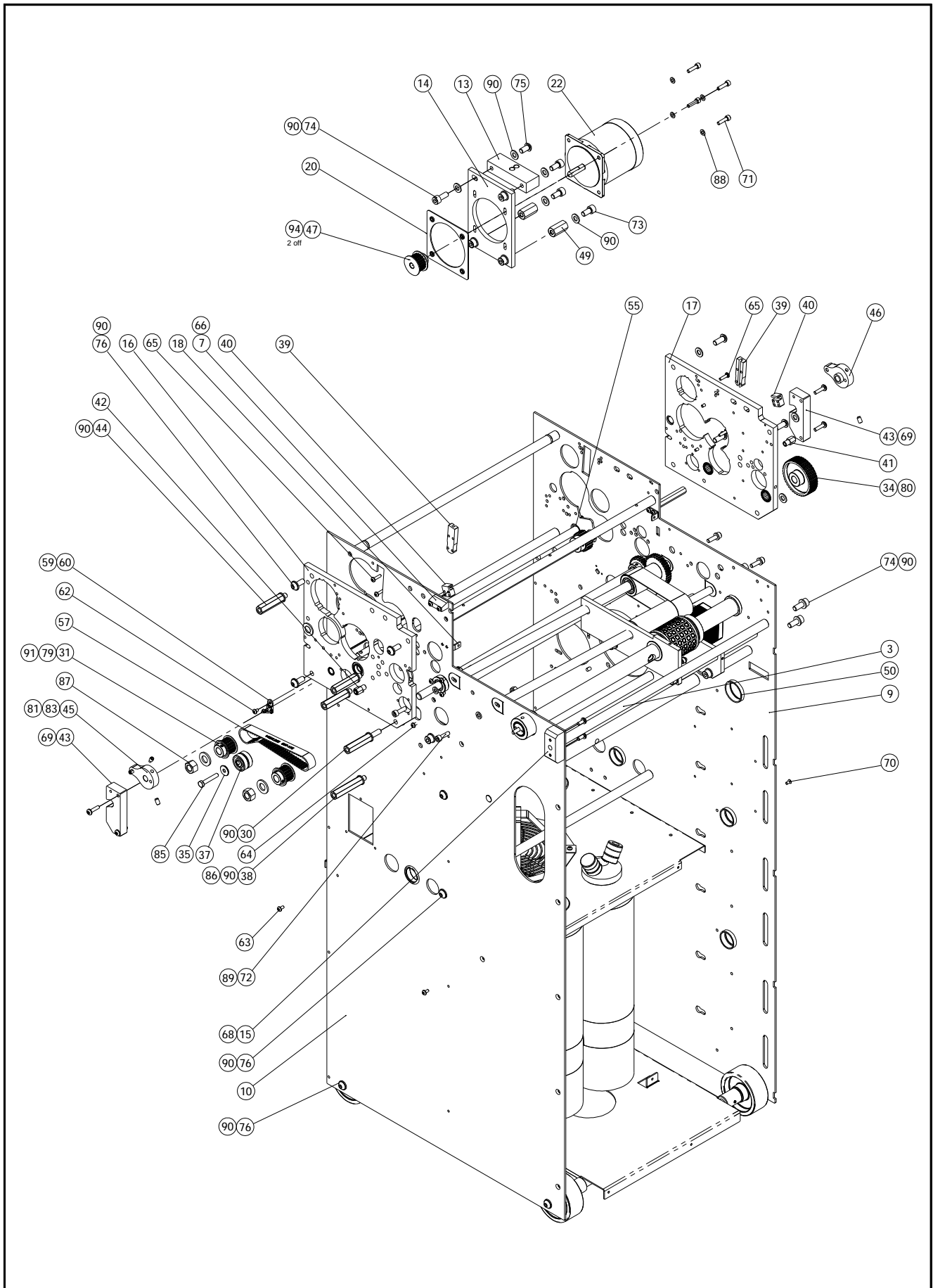
Some sections have tips to assist you in choosing spare parts for your machine or advice about keeping certain parts readily available to minimise downtime.

WARNING.....

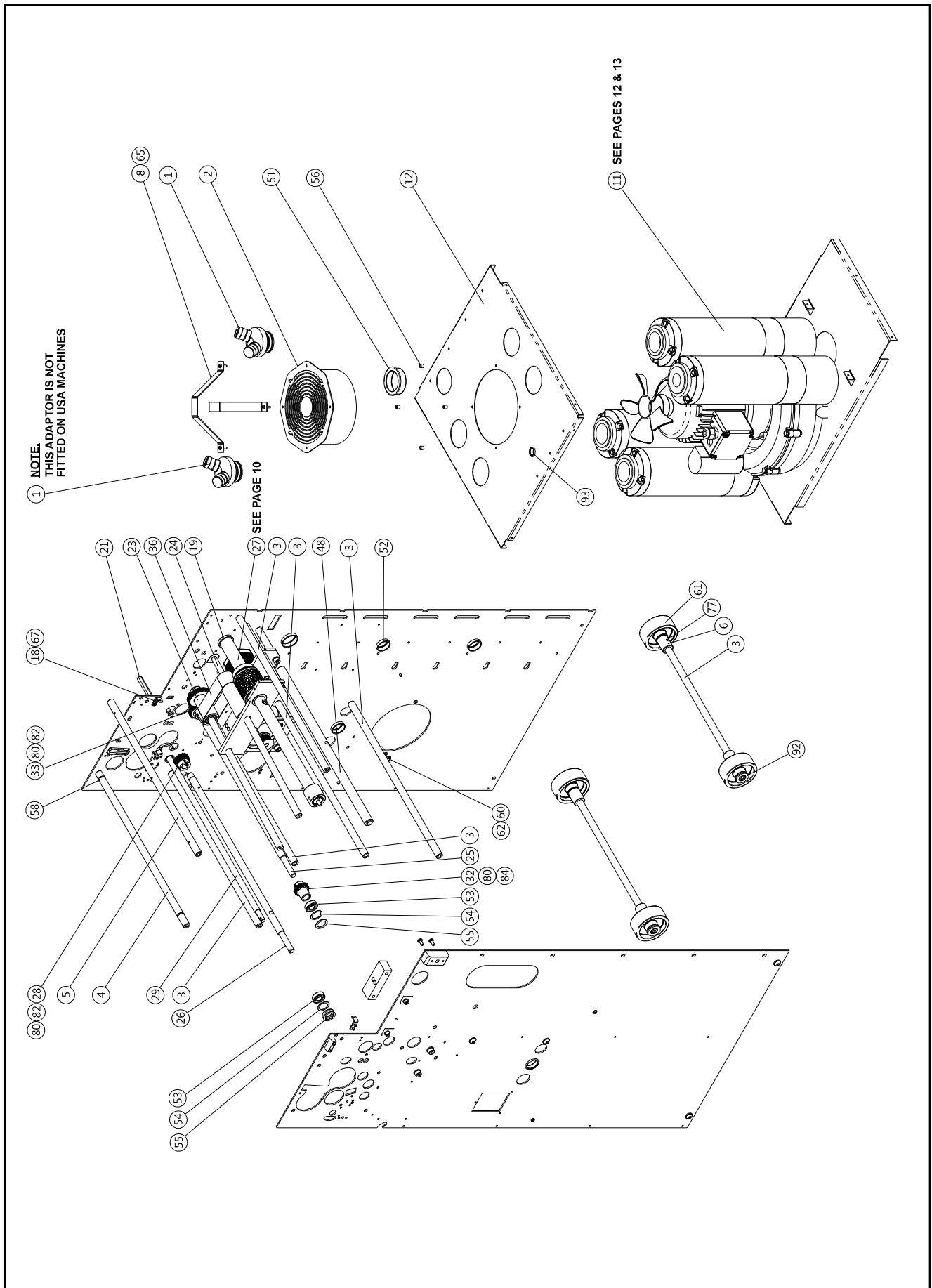
SOME SECTIONS HAVE WARNING NOTICES TO ADVISE YOU ABOUT ACTIONS WHICH MAY IMPAIR YOUR MACHINES PERFORMANCE OR CAUSE UNNECESSARY DAMAGE.

SECTION	ASSEMBLY	DESCRIPTION	PAGE
1	171-01-04	MAIN ASSEMBLY	6
2	175-01-05	MECHANISM	14
3	188-01-01	DELIVERY SYSTEM	34
4	1708203T	FINAL ASSEMBLY	42

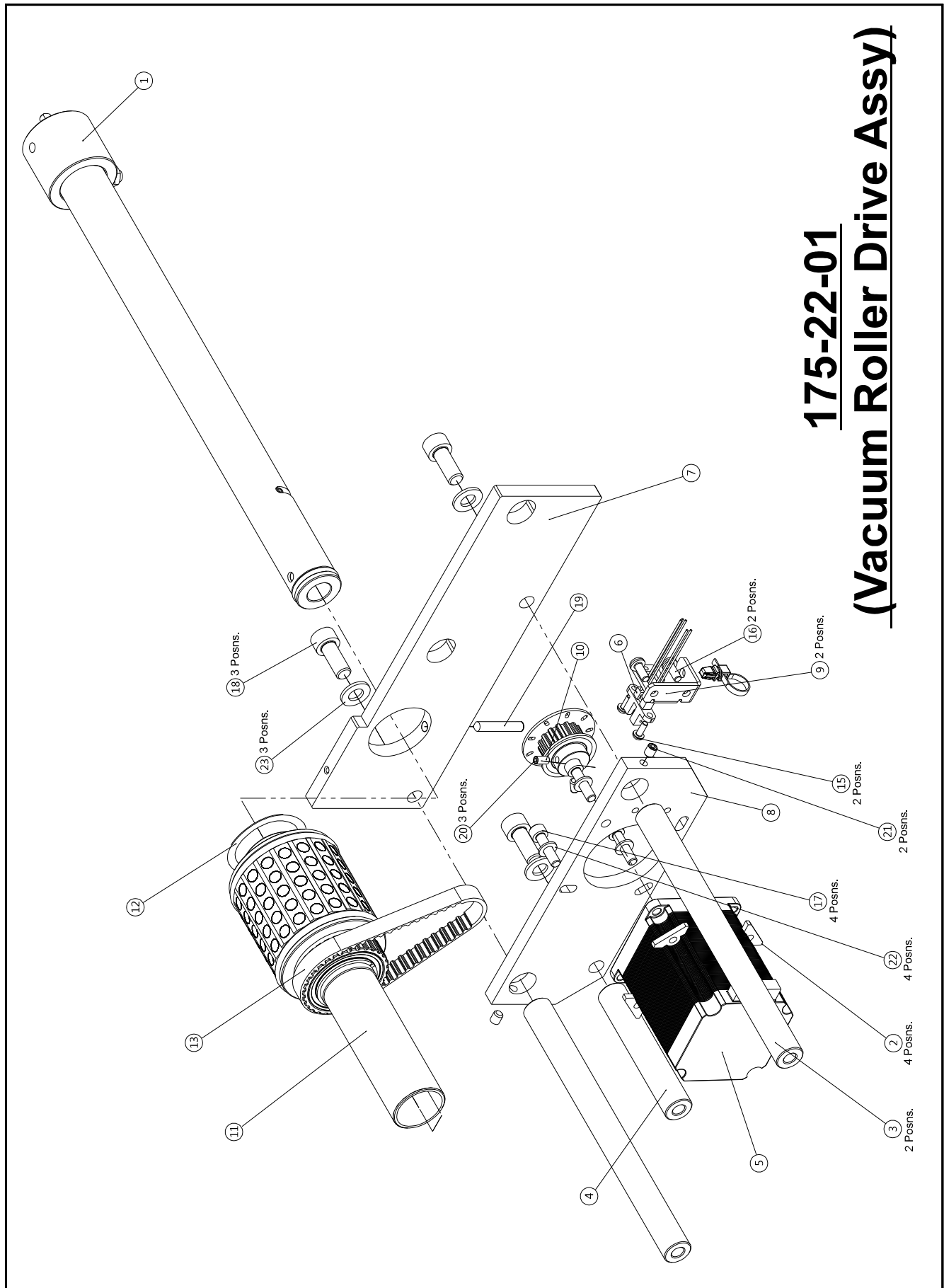
BLANK
PAGE



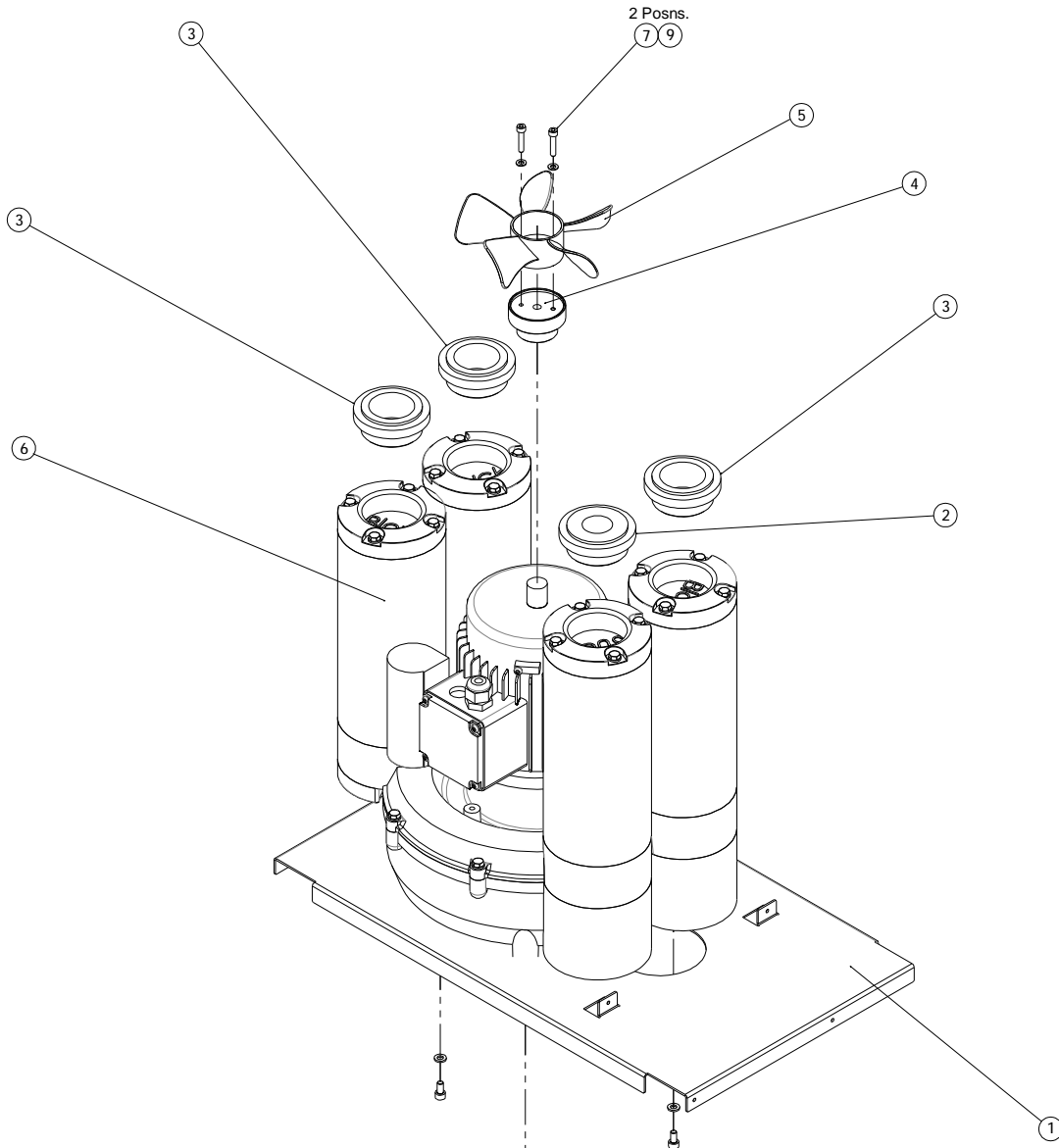
ITEM No.	PART No.	QTY.	DESCRIPTION
3	141-003-01	7	Tie Bar - MK5 Female
7	141-007-01	1	Door Ramp
9	171-001-03	1	Main Plate - LaySide
10	171-001-04	1	Main Plate - Op Side
13	171-005-01	2	PIVOT BLOCK - DYNACREASE
14	171-006-02	1	STEPPER PLATE - Dynacreuse
15	171-007-01	1	Support Block - Loading Table
16	171-010-01	1	BEARING HOUSING ASSY. - Op. Side - DigiFold Mk2.
17	171-010-02	1	BEARING HOUSING ASSEMBLY - Lay Side - DigiFold Mk2.
18	171-011-01	2	Cover Bracket - Entry Guard
20	171-019-01	1	MOTOR RETENSION PLATE - DigiFold 5000P.
22	173-49-01	1	DYNACREASE DRIVE MOTOR & LEAD ASSY.
30	175-022-01	1	HEX PILLAR - M8
31	175-023-01	2	TIMING PULLEY - 16XL - Flanged.
34	175-026-01	1	40XL Timing Pulley - DigiFold Mk2.
35	175-040-01	1	SPACER.
37	175-044-01	1	ECCENTRIC IDLER ASSY.
38	175-045-01	1	HEX PILLAR - M8
39	175-053-06	2	BLADE GUIDE - Top - DigiFold Mk2.
40	175-054-01	2	BLADE GUIDE - Lower
41	175-072-01	1	Jam Detector & Cable Assy - Emmitter
42	175-072-02	1	Jam Detector & Cable Assy - Receiver
43	175-104-01	2	Delivery Retension Plate_Strut
44	175-134-01	3	HEX PILLAR - M8
45	175-193-01	1	CRANK DISC ASSY. - Op. Side
46	175-193-02	1	CRANK DISC ASSY. - Lay Side
47	175-203-01	1	TIMING PULLEY - 18XL - Wide Flanged.
49	51-077	2	HEX PILLAR - M8 x 30 Lg.
50	601-015	2	Snap Bushing Ø33.3 x Ø38
55	605-052	7	SUPPORT WASHER - Ø12
57	607-175	1	140XL062 Pulley Belt
59	613-027	1	TIE WRAP - Small.
60	613-339	3	CABLE TIE MOUNTING
62	401-02-040-006	15	Screw - Pan Pozi Taptite - M4 x 6 Lg.
63	401-02-040-008	6	Screw - Pan Pozi Taptite - M4 x 8 Lg.
64	401-02-040-010	1	Screw - Pan Pozi Taptite - M4 x 10 Lg.
65	401-02-040-016	13	Screw - Pan Pozi Taptite - M4 x 16 Lg.
66	401-02-040-020	4	Screw - Pan Pozi Taptite - M4 x 20 Lg.
68	401-02-050-012	2	Screw - Pan Pozi Taptite - M5 x 12 Lg.
69	401-02-050-020	4	Screw - Pan Pozi Taptite - M5 x 20 Lg.
70	402-02-040-008	1	Screw - Csk Hd. Taptite - M4 x 8 Lg.
71	403-01-050-020	4	SCREW - Socket Cap Head - M5 x 20 Lg.
72	403-01-060-020	4	SCREW - Socket Cap Head - M6 x 20 Lg.
73	403-01-080-016	5	SCREW - Socket Cap Head - M8 x 16 Lg.
74	403-01-080-020	7	SCREW - Socket Cap Head - M8 x 20 Lg.
75	405-01-080-016	1	SCREW - Socket Button Head - M8 x 16 Lg.
76	405-01-080-020	16	SCREW - Socket Button Head - M8 x 20 Lg.
79	409-01-050-005	4	Screw - Skt Set Screw - Flat Pt. - M5 x 5 Lg.
80	409-01-050-006	4	Screw - Skt Set Screw - Flat Pt. - M5 x 6 Lg.
81	409-01-060-010	3	Screw - Skt Set Screw - Flat Pt. - M6 x 10 Lg.
83	411-01-060-010	1	SCREW-SKT SET DOG PT.- M6 x 10 Lg.
85	415-01-060-035	1	Hex Hd. Setscrew - M6 x 35 Lg.
86	461-01-080	1	NUT - Full - M8
87	461-01-120	2	NUT - Full - M12
88	481-050	4	WASHER - Plain - M5
89	481-060	4	WASHER - Plain - M6
90	481-080	34	WASHER - Plain - M8
91	481-120	2	WASHER - Plain - M12
94	407-01-050-006	2	SCREW - Skt Set - Knurled Pt - M5 x 6 Lg.



ITEM No.	PART No.	QTY.	DESCRIPTION
1	71-01-02	2	ADAPTOR ASSY - Ø24 / Ø12.5 - Sv190 (UK)
	71-01-01	1	ADAPTOR ASSY - Ø22 / Ø10 - Sv130 (USA)
2	75-229-01	1	Fan Guard Assy. (UK)
	75-229-02	1	Fan Guard Assy. (USA)
3	141-003-01	7	Tie Bar - MK5 Female
4	141-003-06	1	Tie Bar - Perforator Stop
5	141-003-07	1	Tie Bar - Entry Guard
6	141-006-01	4	COLLAR - Wheel Spacer
8	141-016-01	2	Cowl Defender
11	171-02-01	1	COMPRESSOR ASSEMBLY - 50Hz (UK)
	171-02-02	1	COMPRESSOR ASSEMBLY - 60Hz (USA)
12	171-004-01	1	BAFFLE PLATE (UK)
	171-004-02	1	BAFFLE PLATE (USA)
19	171-012-01	1	Choke Support Bush
21	171-034-01	1	HEX PILLAR - M8 x 30 Lg.
23	175-03-02	1	INFEEED DRIVE SHAFT ASSY.
24	175-04-01	1	Infeed Idler Shaft Assy.
25	175-16-01	1	Infeed Transfer Shaft Assy.
26	175-18-02	1	TRANSFER SHAFT ASSY.
27	175-22-01	1	VACUUM ROLLER DRIVE ASSY.
28	175-005-01	1	INPUT DRIVE GEAR 20T - Steel
29	175-019-02	1	SHAFT - Knife Drive
32	175-024-01	1	INPUT DRIVE GEAR - 20T
33	175-025-03	1	INPUT BELT DRIVE GEAR - 26T
36	175-042-01	1	Feed Belt
48	178-052-02	1	Action Shaft - Gas Strut
51	601-153	1	Snap Bushing Ø46 x Ø57.2
52	601-164	4	SNAP BUSHING
53	602-003	3	BEARING - Deep Groove Ball - 6001 ZZ
54	604-071	2	WAVED WASHER - Ø21 x Ø27.5 x 3
55	605-052	7	SUPPORT WASHER - Ø12
56	605-058	4	NYLON SPACER - Ø7.94 x Ø4.34 x 6.35 (UK)
	75-254-02	4	HEX PILLAR M4M / M4F X 30 LONG (USA)
58	609-029	2	'O' Ring Ø8 x Ø3
60	613-339	3	CABLE TIE MOUNTING
61	62-006	4	NYLON WHEEL
62	401-02-040-006	15	Screw - Pan Pozi Taptite - M4 x 6 Lg.
65	401-02-040-016	13	Screw - Pan Pozi Taptite - M4 x 16 Lg.
67	401-02-040-025	1	Screw - Pan Pozi Taptite - M4 x 25 Lg.
77	409.01.040.006	4	Screw - Skt Set Screw - Flat Pt. - M4 x 6 Lg.
80	409.01.050.006	4	Screw - Skt Set Screw - Flat Pt. - M5 x 6 Lg.
82	411-01-050-008	3	SCREW-SKT SET DOG PT.- M5 x 8 Lg.
84	411-01-060-006	1	SCREW-SKT SET DOG PT.- M6 x 6 Lg.
92	481-160	8	WASHER - Plain - M16
93	601-076	1	SNAP BUSHING Ø19 HOLE - Ø17 BORE

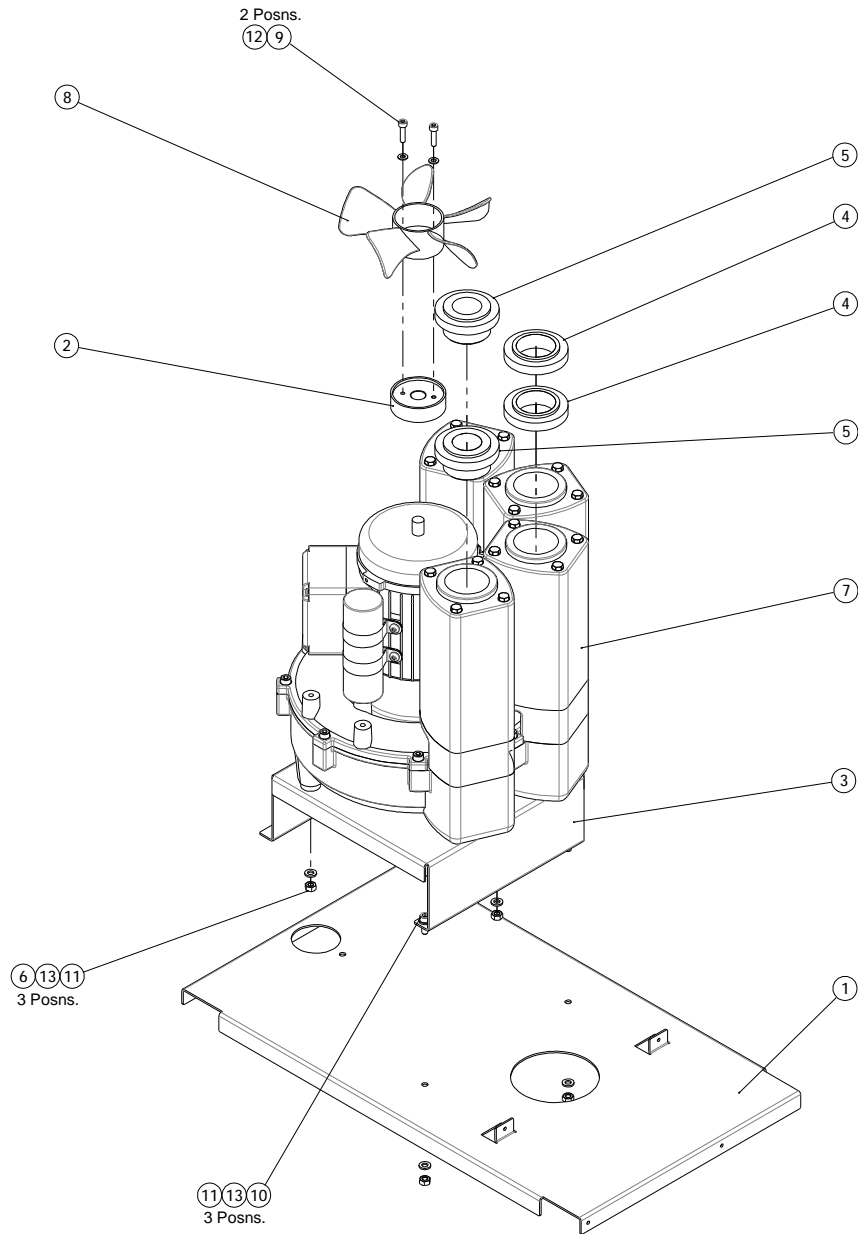


ITEM No.	PART No.	QTY.	DESCRIPTION
1	73-05-04	1	CHOKE BLEED ASSEMBLY - Digifold Mk2
2	126-107-01	4	Lock Nut - Stepper Motor
3	141-003-02	2	Tie Bar - Vacuum Assy - Digifold Mk2
4	141-003-03	1	Tie Bar - Vacuum Stepper - Digifold Mk2
5	173-62-01	1	Vacuum Drum Motor Assy
6	173-57-01	1	BLADE POSITION SENSOR
7	175-100-01	1	Vacuum Support Plate
8	175-101-01	1	Vacuum Stepper Plate
9	175-105-01	1	SENSOR MOUNT - Vacuum Roller
10	175-106-01	1	Vacuum Roller Drive Pulley - 15T
11	175-21-01	1	Vacuum Roller Assy
12	604-062	1	Waved Washer
13	607-005	1	100XL037 Timing Belt
14	650-028	1	CABLE TIE MTG. - Push Fit.
15	401-02-030-008	2	Screw - Pan Pozi Taptite - M3 x 8 Lg.
16	401-02-040-010	2	Screw - Pan Pozi Taptite - M4 x 10 Lg.
17	403-01-050-020	4	SCREW - Socket Cap Head - M5 x 20 Lg.
18	403-01-080-020	3	SCREW - Socket Cap Head - M8 x 20 Lg.
19	408-01-050-030	1	Screw Skt Cone Pt - M5 x 30 Lg.
20	409-01-040-008	2	Screw - Skt Set Screw - Flat Pt. - M4 x 8 Lg.
21	409-01-050-006	2	Screw - Skt Set Screw - Flat Pt. - M5 x 6 Lg.
22	481-050	4	WASHER - Plain - M5
23	481-080	3	WASHER - Plain - M8



ITEM No.	PART No.	QTY.	Description
1	171-003-01	1	PLINTH - DigiFold 5000P.
2	91-025-04	1	BUNG - Compressor - Ø25 Pipe.
3	91-025-05	3	BUNG - Compressor - Ø40 Pipe.
4	91-104-01	1	FAN HUB - SV190.
5	621-025	1	FAN - PLASTIC 5 BLADE 6" CCW
6	621-032	1	Blower SV190
7	403-01-050-025	2	SCREW - Socket Cap Head - M5 x 25 Lg.
8	403-01-060-012	3	SCREW - Socket Cap Head - M6 x 12 Lg.
9	481-050	2	WASHER - Plain - M5
10	481-060	3	WASHER - Plain - M6

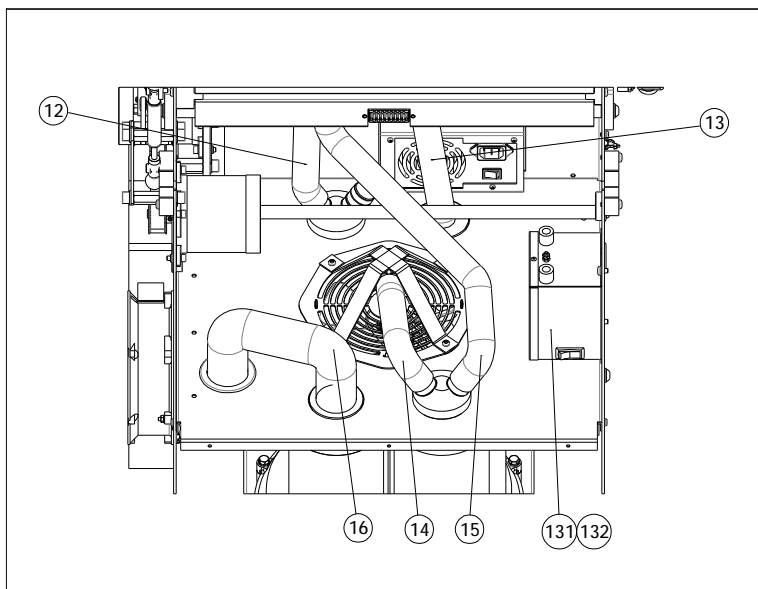
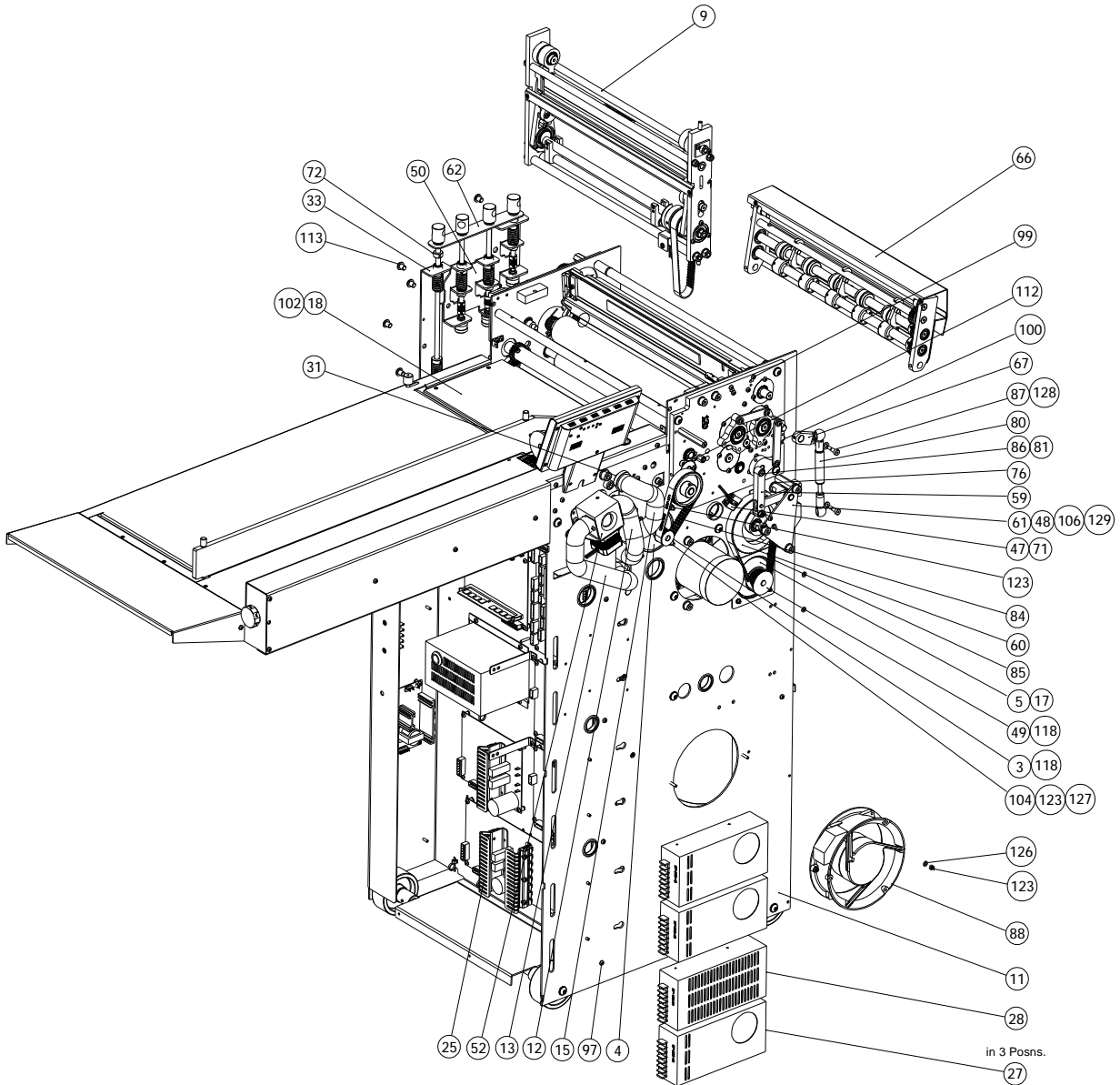
171-02-01
(COMPRESSOR ASSEMBLY - 50HZ)



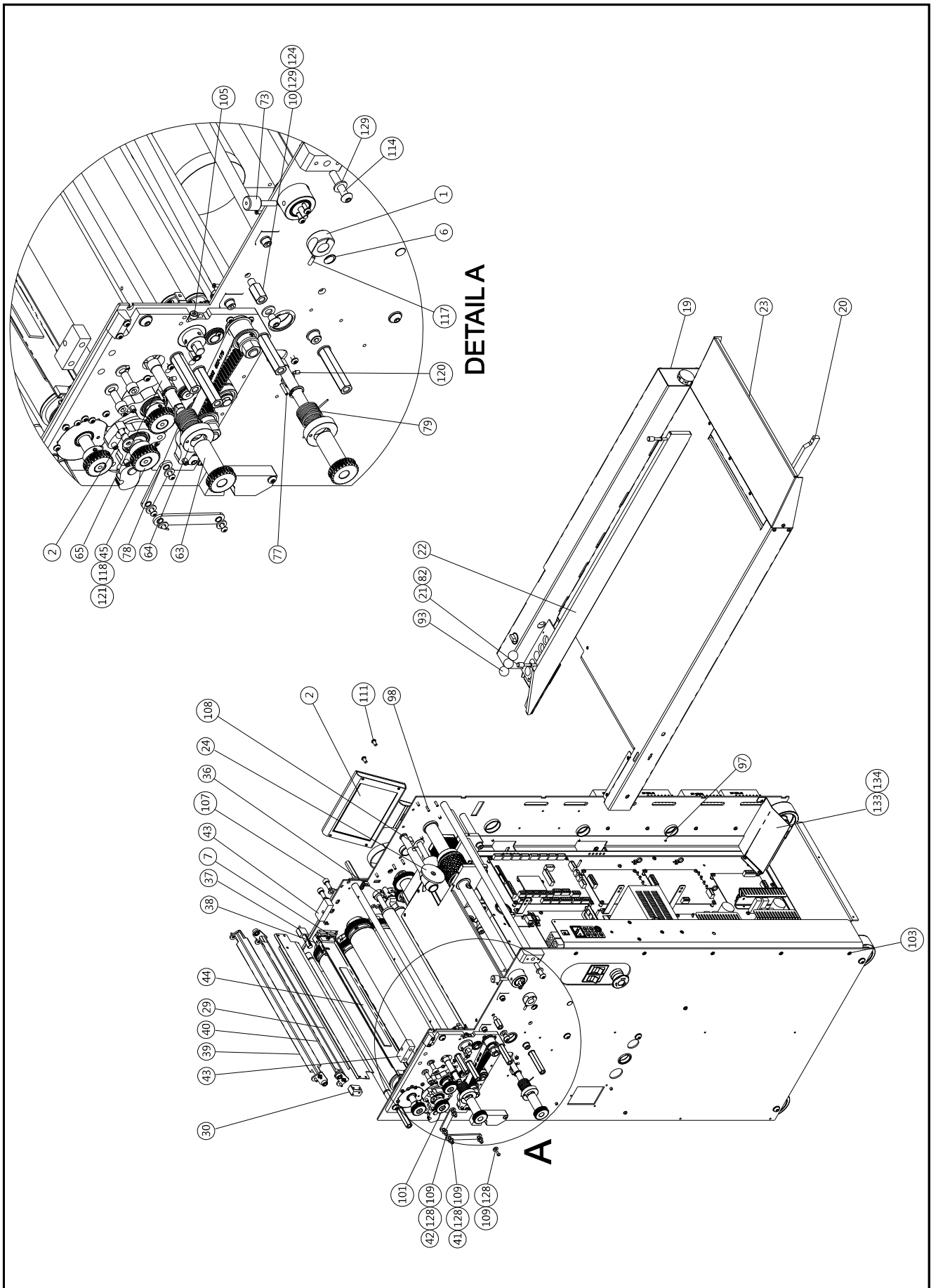
ITEM No.	PART No.	QTY.	Description
1	171-003-01	1	PLINTH - DigiFold 5000P.
2	91-024-03	1	FAN ADAPTER - Compressor - SV130.
3	171-020-01	1	COMPRESSOR SUPPORT - SV130 - DigiFold 5000P.
4	91-025-06	2	BUNG - Compressor Ports - AC33
5	91-025	2	BUNG - Compressor Ports.
6	601-161	3	VIBRATION MOUNT - Stud.
7	621-037	1	BLOWER - SV130 (UL).
8	621-025	1	FAN - PLASTIC 5 BLADE 6" CCW
9	403-01-050-020	2	SCREW - Socket Cap Head - M5 x 20 Lg.
10	403-01-060-016	3	SCREW - Socket Cap Head - M6 x 16 Lg.
11	461-01-060	6	NUT - Full - M6
12	481-050	2	WASHER - Plain - M5
13	481-060	9	WASHER - Plain - M6

171-02-02

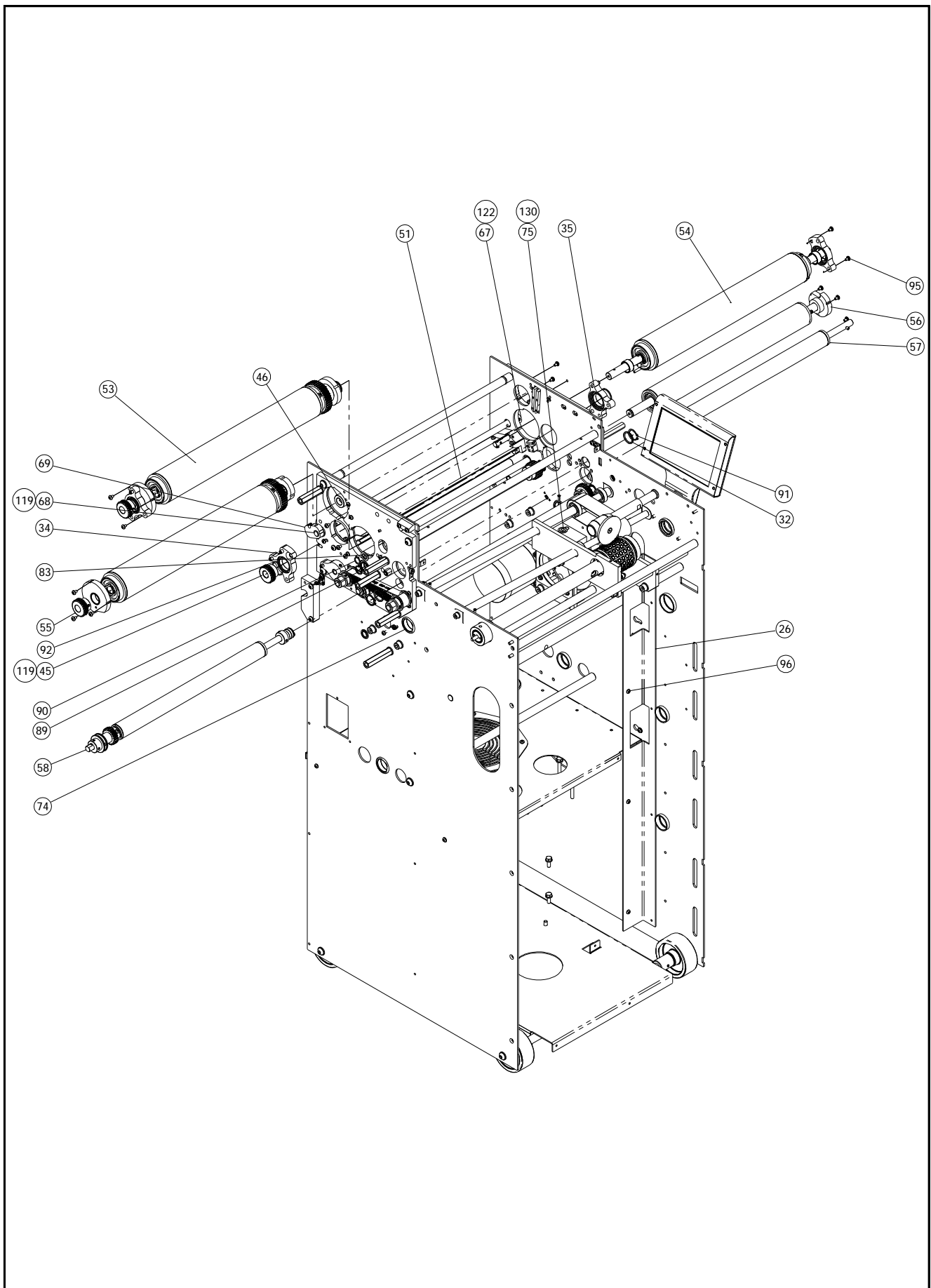
(COMPRESSOR ASSEMBLY - 60HZ - USA)



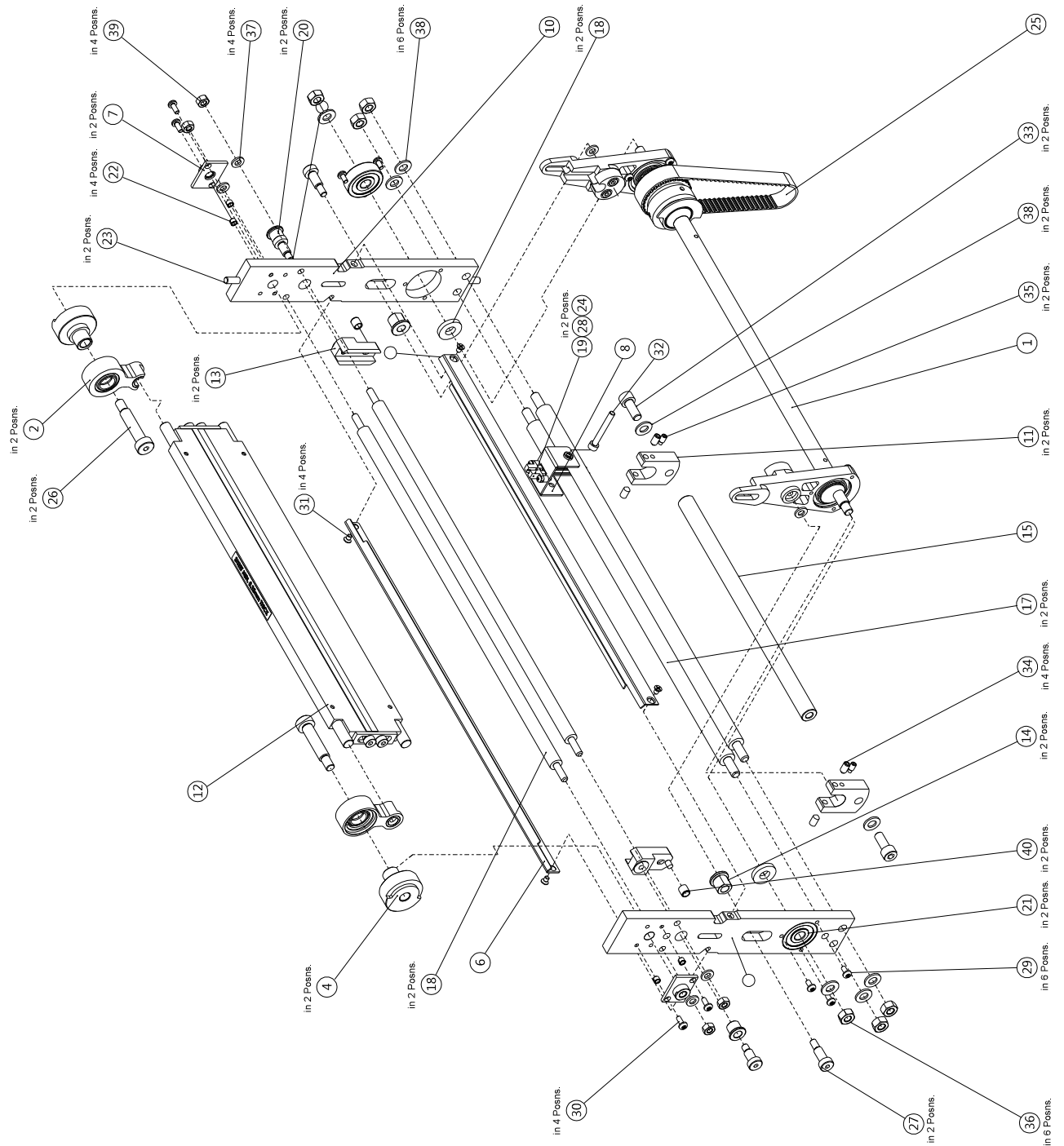
ITEM No.	PART No.	QTY.	DESCRIPTION
3	76-123-05	1	TIMING PULLEY - 16XL - Wide Flanged.
4	76-240	1	STEPPER DRIVE MOTOR & LEAD ASSY.
5	76-257	1	FOLD KNIVES MOTOR & LEAD ASSY.
9	170-06-03	1	DynaCrease - Digifold
11	171-01-04	1	MAIN FRAME ASSY.
12	171-014-02	1	HOSE - VACUUM BLOW
13	171-015-02	1	HOSE - VACUUM SUCK
14	171-016-01	1	HOSE - EXHAUST BLOW
15	171-017-02	1	HOSE - MANIFOLD BLOW
16	171-018-01	1	HOSE - FULL SUCTION Ø40
17	171-019-01	1	MOTOR RETENTION PLATE
18	172-003-01	1	FEED BED
25	173-01-02	1	ELECTRONICS ASSEMBLY
27	173-06-01	3	POWER SUPPLY ASSY. - 48V
28	173-06-02	1	POWER SUPPLY ASSY. - 24V
31	175-061-01	1	Air Inlet Port - Digifold Mk2
33	175-09-01	1	TILT ASSY - Digifold Mk2
47	175-195-01	1	Cam Sensor Bracket
48	175-198-01	2	HEX SPACER - Cam Pulley Support Plate.
49	175-202-01	1	TIMING PULLEY - 25XL - Wide Flanged.
50	175-25-01	1	GAP SET ASSEMBLY
52	175-28-01	1	Butterfly Valve - Stepper
59	175-32-01	1	Cam Follower Assembly
60	175-33-01	1	Cam Pulley Assembly
61	175-35-01	1	Cam Pulley Support Assembly
62	175-36-01	1	Friction Plate Assembly
66	177-01-01	1	PERFORATOR ASSEMBLY
67	177-011-01	1	PIVOT ARM - PERFORATOR
71	76-266	1	Fold Knives Sensor Lead
72	15-028	1	Collar
76	602-190	1	Flanged Iglidur Bush - Ø10 x Ø12 x Ø18 x 5
80	604-100	1	GS-19 Gas Spring
81	605-003	1	Thrust Washer Ø6.6 x Ø11.1 x 1.19
84	607-171	1	130XL062 Timing Belt
85	607-183	1	190X Timing Belt
86	608-009	1	Shoulder Bolt - Ø6(M5) x 12 Lg.
87	608-011	2	Shoulder Bolt - Ø6(M5) x 10 Lg.
88	613-253	1	LARGE FAN EBMW2S130-AA03-46 230V 50/60HZ
97	401-02-040-010	6	Screw - Pan Pozi Taptite - M4 x 10 Lg.
99	401-02-040-020	3	Screw - Pan Pozi Taptite - M4 x 20 Lg.
100	401-02-050-012	2	Screw - Pan Pozi Taptite - M5 x 12 Lg.
102	402-02-030-008	4	Screw - Csk Hd. Taptite - M3 x 8 Lg.
104	403-01-050-016	8	SCREW - Socket Cap Head - M5 x 16 Lg.
106	403-01-080-016	6	SCREW - Socket Cap Head - M8 x 16 Lg.
112	405-01-060-020	2	SCREW - Socket Button Head - M6 x 20 Lg.
113	405-01-080-010	6	SCREW - Socket Button Head - M8 x 12 Lg.
118	409-01-050-006	5	Screw - Skt Set Screw - Flat Pt. - M5 x 6 Lg.
123	461-01-040	6	NUT - Full - M4
126	481-040	2	WASHER - Plain - M4
127	481-050	8	WASHER - Plain - M5
128	481-060	13	WASHER - Plain - M6
129	481-080	13	WASHER - Plain - M8
131	75-512	1	ANTI-STATIC TRANSFORMER ASSY. - 230V - UL
132	401-02-050-008	2	SCREW-Pan Pozi Taptite-M5 X 8 Lg.



ITEM No.	PART No.	QTY.	DESCRIPTION
1	73-066-01	1	KNOB - Vac Bleed
2	75-06-02	1	TOUCH SCREEN ASSEMBLY 7" - (New Controller)
6	94-021	1	LABEL - Papergate 'UP'.
7	126-059-02	2	Link
8	145-093-02	4	KNIFE DRIVE PIN.
10	171-008-01	1	HEX PILLAR - M8
19	172-01-02	1	Loading Table - DigiFold
20	172-013-01	1	Sidelay Clamp Bar - DigiFold Mk2
21	172-014-01	2	Sidelay Locking Pin - DigiFold Mk2
22	172-02-06	1	MOVING SIDELAY ASSY. - DigiFold Pro
23	172-022-01	1	LOADING TABLE EXTENSION - DigiFold Mk2.
24	172-05-01	1	PAPERGATE ASSEMBLY - Indexing - DigiFold
29	175-052-01	1	ROLLER SHEILD - 2nd - 25°
30	175-058-02	1	SHIELD SUPPORT - Top - Op. - DigiFold Mk2.
36	175-10-01	1	Edge Sensor Assembly - DigiFold Mk2
37	175-11-01	1	SENSOR BAR ASSEMBLY - DigiFold Mk2.
38	175-11-03	1	SENSOR BAR ASSEMBLY - DigiFold Mk2.
39	175-12-01	1	2nd Blade Assembly - DigiFold Mk2.
40	175-12-02	1	1st Blade Assembly - DigiFold Mk2.
41	175-125-01	2	Connecting Link Assy
42	175-125-02	2	Knife Connecting Link Assy
43	175-129-01	2	Upper Support Block
44	175-13-02	1	Paper Guide Assy. - 2nd Extended
45	175-131-01	1	Worm Wheel - Eccentric
63	176-081-01	2	WORM WHEEL - Gap Set.
64	176-082-01	2	SPRING HUB - Dynatilt
65	176-258-01	2	TILT POST - Dyncrease
73	28-003	1	UNIVERSAL KNOB ASSY - M6 x 25 Lg. - Black - Ø16
78	604-097	1	L.H. Torsion Spring
79	604-098	1	R.H. Torsion Spring
82	605-043	2	NYLON WASHER - Ø5.1 X Ø9.5 X 0.75
93	617-003	5	STEEL BALL Ø20
97	401-02-040-010	6	Screw - Pan Pozi Taptite - M4 x 10 Lg.
98	401-02-040-016	8	Screw - Pan Pozi Taptite - M4 x 16 Lg.
101	401-02-050-025	2	Screw - Pan Pozi Taptite - M5 x 25 Lg.
103	402-02-040-010	5	Screw - Csk Hd. Taptite - M4 x 10 Lg.
105	403-01-050-020	2	Screw - Socket Cap Head - M5 x 20 Lg.
107	403-01-080-020	4	Screw - Socket Cap Head - M8 x 20 Lg.
108	403-01-100-016	1	Screw - Socket Cap Head - M10 x 16 Lg.
109	405-01-040-008	9	Screw - Socket Button Head - M4 x 8 Lg.
111	405-01-060-012	2	Screw - Socket Button Head - M6 x 12 Lg.
114	405-01-080-040	1	Screw - Socket Button Head - M8 x 40 Lg.
117	409-01-040-012	1	Screw - Skt Set Screw - Flat Pt. - M4 x 12 Lg.
120	411-01-040-008	2	Screw - Skt Set Dog Pt. - M4 x 8 Lg.
121	411-01-050-010	1	Screw - Skt Set Dog Pt. - M5 x 10 Lg.
124	461-01-080	1	NUT - Full - M8
129	481-080	13	WASHER - Plain - M8
133	173-072-01	1	PLATE - PROTECTION - LAY SIDE
134	401-02-040-008	3	Screw - Pan Pozi Taptite - M4 x 8 Lg.

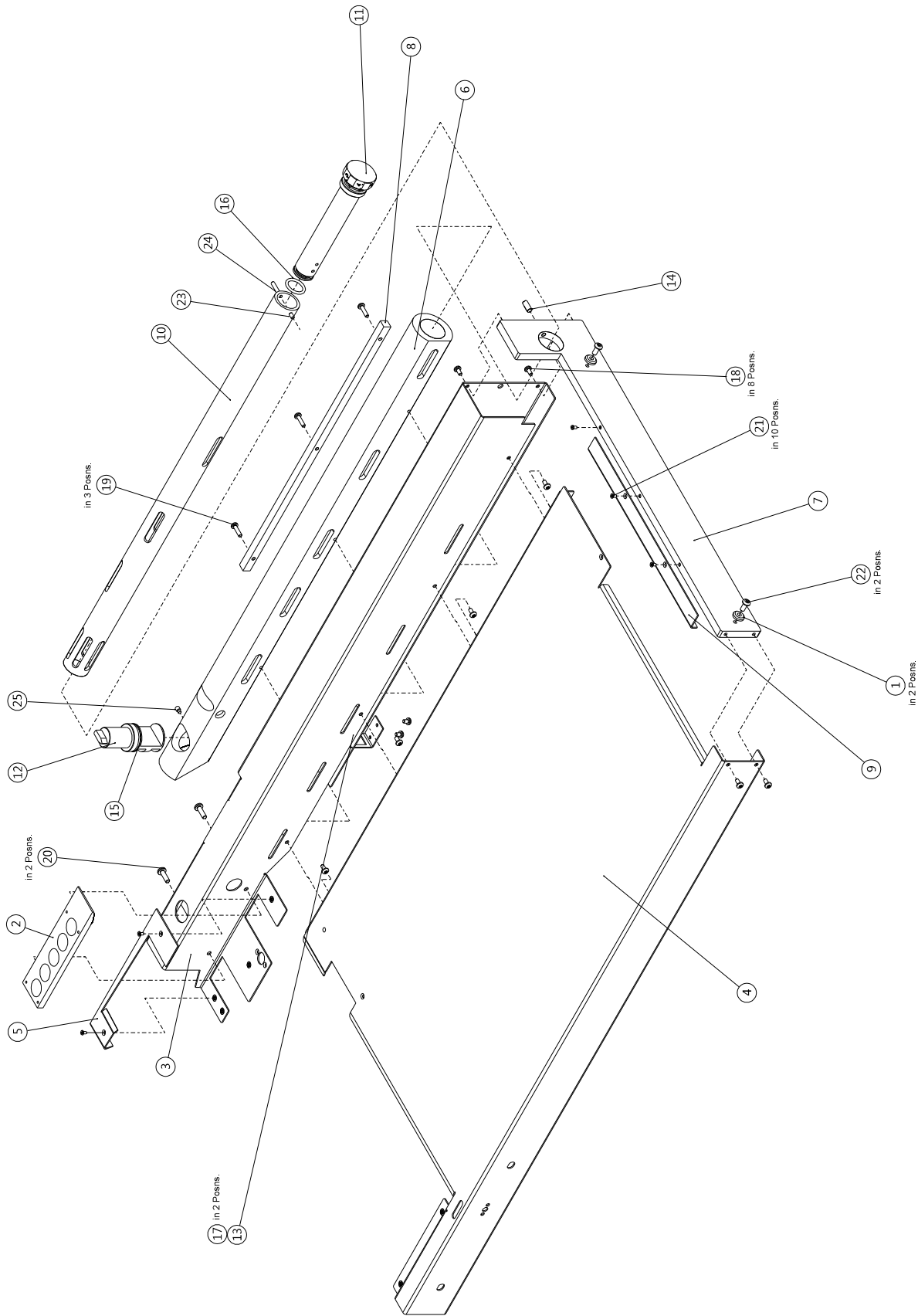


ITEM No.	PART No.	QTY.	DESCRIPTION
26	173-015-01	1	SUPPORT - Electrical Panel.
32	175-065-01	2	SPACER.
34	175-090-01	1	KNIFE DRIVE HUB ASSY - 2nd Roller - Op. Side
35	175-090-04	1	KNIFE DRIVE HUB - 1st Roller - Lay Side
46	175-160-01	1	COLLAR - Top Roller.
51	175-26-02	1	Roller Shield Assy - Lower
53	175-29-01	1	FOLD ROLLER ASSY. - DigiFold Mk2 - 1st.
54	175-29-02	1	FOLD ROLLER ASSY. - DigiFold Mk2 - 2nd.
55	175-29-03	1	FOLD ROLLER ASSY. - DigiFold Mk2 - 3rd.
56	175-29-04	1	FIXED ROLLER ASSY.
57	175-31-01	1	INPUT ROLLER ASSEMBLY - Lower
58	175-31-04	1	INPUT ROLLER ASSEMBLY - Upper
68	177-012-01	1	PIVOT SHAFT - Perforator - DigiFold Mk2.
69	177-015-01	1	CABLE GUIDE - Perforator Digifold Mk2.
74	601-164	2	SNAP BUSHING
75	602-155	2	Flanged Iglidur Bush - Ø6 x Ø8 x Ø12 x 4
83	605-045	2	Support Washer Ø12
89	615-014	1	CIRCLIP - External - Ø15
90	615-015	2	CIRCLIP - External - Ø12
91	615-055	2	CIRCLIP - External - Ø20
92	615-074	2	RETAINING RING - External - Ø25
95	401-02-040-006	29	Screw - Pan Pozi Taptite - M4 x 6 Lg.
96	401-02-040-008	8	Screw - Pan Pozi Taptite - M4 x 8 Lg.
119	409-01-060-006	1	Screw - Skt Set Screw - Flat Pt. - M6 x 6 Lg.
122	411-01-060-008	1	SCREW - Skt Set Dog Pt. - M6 x 8 Lg.
130	482-080	2	Washer - Plain - Thin - M8



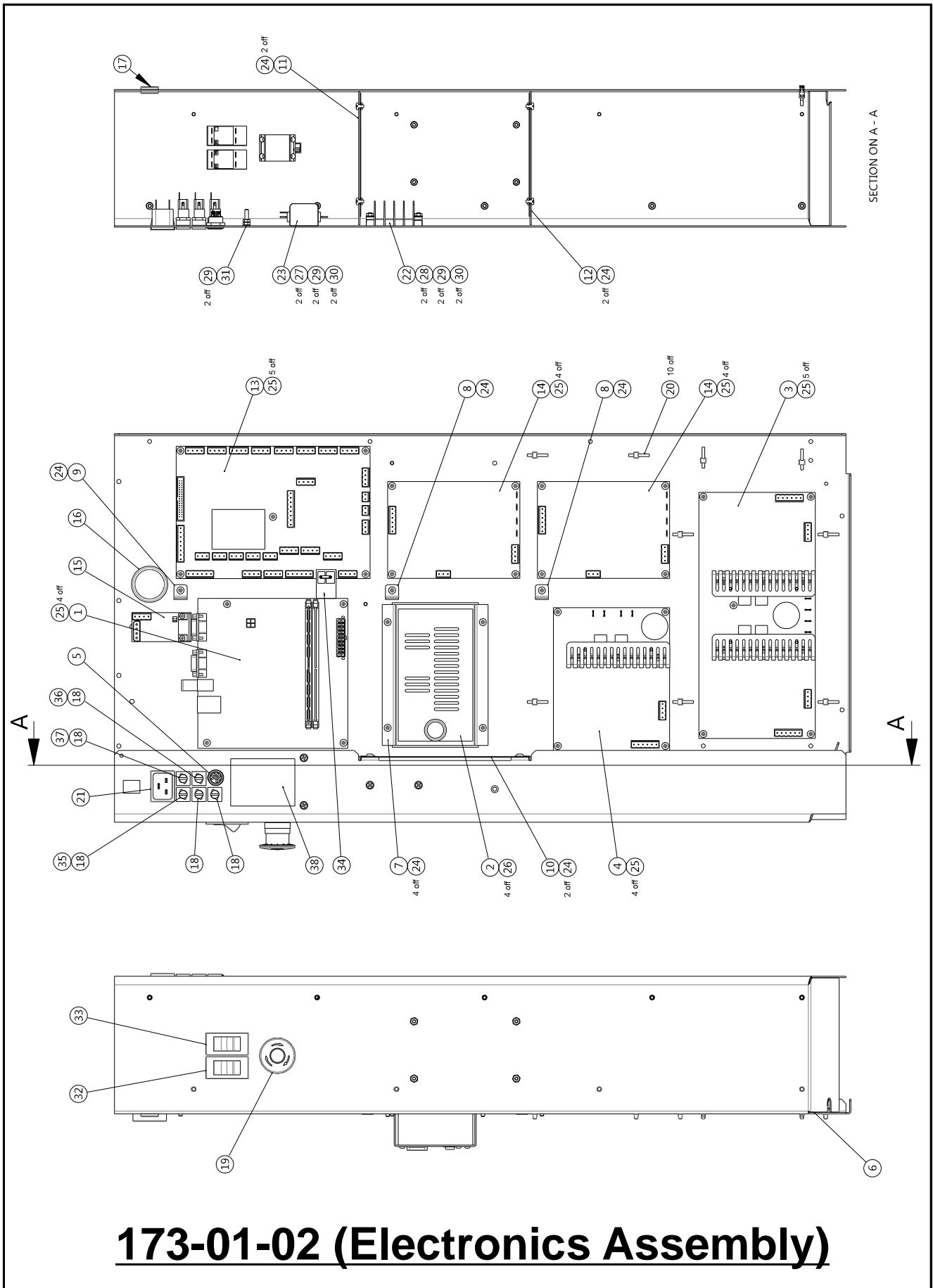
170-06-03 (DynaCrease)

ITEM No.	PART No.	QTY.	DESCRIPTION
1	176-01-01	1	Power Shaft Assy - Digifold Mk2
2	176-02-01	2	Blade Adjuster Assy
3	176-003-01	2	Upper Pivot Screw - Dynacrease
4	176-011-01	2	Adjustment Cam
5	176-019-01	1	Input Guide - DynaCrease
6	176-020-02	1	Output Guide - DynaCrease
7	176-047-01	2	LOCK NUT - Blade Cam.
8	176-083-01	1	Sensor Mount Plate - Dynacrease
9	176-142-01	1	SIDE PLATE - Op. Side - Dynacrease
10	176-142-02	1	SIDE PLATE - Lay Side - Dynacrease
11	176-176-01	2	Counterweight - DynaCrease
12	176-213-02	1	DYNAMIC BLADE SET - STANDARD
13	176-254-01	2	UPPER GUIDE BLOCK - Dynamic
14	176-257-01	2	Power Link Pivot Bush
15	141-003-09	1	Tie Bar - Counterweight.
16	76-003-03	2	TIE BAR - Dynacrease - Upper
17	76-003-04	2	TIE BAR -Dynacrease - Lower
18	76-016	2	SPACER - Crank Shaft.
19	76-156	1	BLADE POSITION SENSOR
20	602-009	2	Flanged Oilite Bush
21	602-082	2	BEARING-DEEP GROOVE BALL - 6300-ZZ
22	603-041	4	SPIROL SPACER - Ø4 x Ø5.65 x 4 Lg.
23	603-095	2	DOWEL - Ø6 x 20 Lg.
24	605-073	2	NYLON SPACER - Ø6 x Ø3.2 x 7
25	607-184	1	100 XL Timing Belt
26	608-015	2	Shoulder Bolt - Ø10(M8) x 40 Lg.
27	608-018	2	Shoulder Bolt - Ø8(M6) x 16 Lg.
28	401-02-030-012	2	Screw - Pan Pozi Taptite - M3 x 12 Lg.
29	401-02-040-008	6	Screw - Pan Pozi Taptite - M4 x 8 Lg.
30	401-02-040-010	4	Screw - Pan Pozi Taptite - M4 x 10 Lg.
31	404-01-040-008	4	Screw - Socket Csk Head - M4 x 8 Lg.
32	403-01-050-040	1	SCREW - Socket Cap Head - M5 x 40 Lg.
33	403-01-080-020	2	SCREW - Socket Cap Head - M8 x 20 Lg.
34	408-01-060-012	4	Screw - Skt Set Screw - Cone Pt. - M6 x 12 Lg.
35	411-01-050-010	2	SCREW - Skt Set Dog Pt. - M5 x 10 Lg.
36	461-01-080	6	Nut - Full - M8
37	481-060	6	WASHER - Plain - M6
38	481-080	8	WASHER - Plain - M8
39	461-01-060	4	NUT - Full - M6
40	602-148	2	BEARING - Iglidur W300

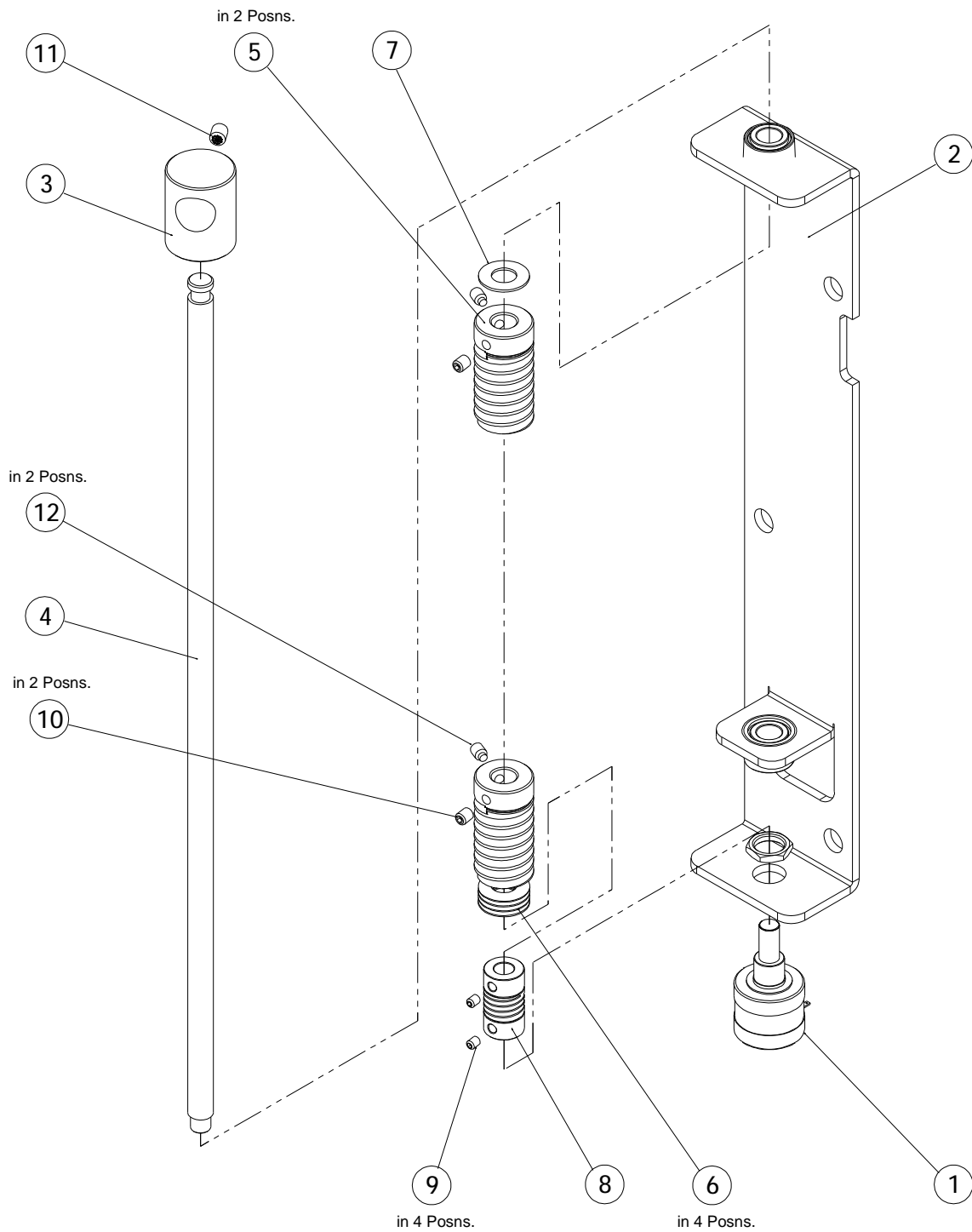


172-01-02 (Loading Table)

ITEM No.	PART No.	QTY.	DESCRIPTION
1	73-004	2	Key Hole Latch - Creaser
2	74-019-02	1	BALL HOLDER -DocuMaster - Digifold Mk2
3	172-001-02	1	SideLay - Digifold Pro
4	172-002-01	1	Loading Table - Digifold Mk2
5	172-004-01	1	CONTROL BED - Digifold Mk2
6	172-005-01	1	MANIFOLD TUBE - Digifold Mk2
7	172-006-01	1	End Plate - Loading Table
8	172-007-01	1	Manifold Spacer Strip
9	172-008-01	1	Sidelay - Rear Guide
10	172-009-01	1	Slotted Distribution Tube
11	172-010-01	1	KNOB - 6 Position Air Distribution
12	172-011-01	1	Air Bleed Spool
13	172-030-01	1	BRACKET - Ethernet Socket
14	601-162	1	M6 Ball Spring Plunger
15	609-017	1	'O' Ring Ø26 x Ø3
16	609-026	1	O'Ring.
17	401-02-040-006	2	Screw - Pan Pozi Taptite - M4 x 6 Lg.
18	401-02-040-008	8	Screw - Pan Pozi Taptite - M4 x 8 Lg.
19	401-02-040-016	3	Screw - Pan Pozi Taptite - M4 x 16 Lg.
20	401-02-050-016	2	Screw - Pan Pozi Taptite - M5 x 12 Lg.
21	402-02-030-006	6	Screw - Csk Hd. Taptite - M3 x 6 Lg.
22	405-01-050-012	2	Screw - Button Hd. - M5 x 12 Lg.
23	409-01-040-012	1	Screw - Skt Set Screw - Flat Pt. - M4 x 12 Lg.
24	409-01-040-020	1	Screw - Skt Set Screw - Flat Pt. - M4 x 20 Lg.
25	411-01-050-008	1	SCREW - Skt Set Dog Pt. - M5 x 8 Lg.

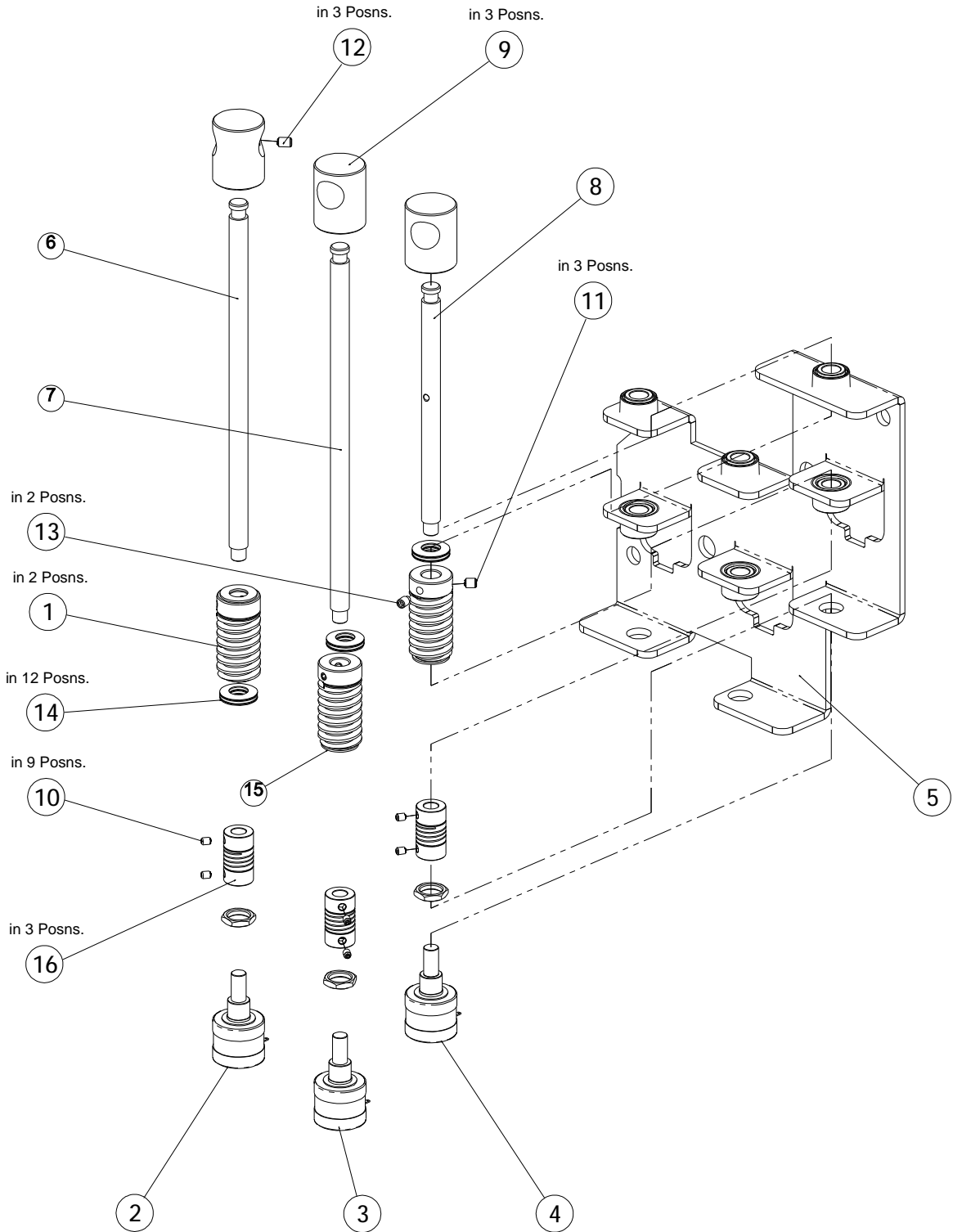


ITEM No.	PART No.	QTY.	Description
1	75-500-01	1	Mini ITX Motherboard - DigiFold Pro
2	76-272	1	PSU Assy. - ATX12V - 300W
3	125-21-02	1	Stepper Drive PCB Assembly
4	125-25-01	1	Small Stepper Drive PCB Assy. - High Power
5	144-116	1	DIN Socket Assy.
6	173-005-02	1	Electronics Panel - DigiFold Mk2
7	173-020-02	1	PSU Mounting Bracket
8	173-028-01	2	Strain Relief Strap - Long
9	173-028-02	1	Strain Relief Strap - Short
10	173-074-01	1	Plate - Mains Cover
11	173-075-01	1	Cover Plate - Mains - Upper
12	173-075-02	1	Cover Plate - Mains - Lower
13	174-01-02	1	Controller PCB Assy.
14	174-06-01	2	Small Stepper Drive PCB Assy. - Low Power
15	174-19-01	1	RS232 Adaptor Board
16	601-015	1	Snap Bushing Ø33.3 x Ø38
17	601-084	1	Grommet - Ø12.7 X Ø15 X Ø20 X 1.6
18	613-352	5	FUSE HOLDER - Ø5 x 20
19	613-365	1	EMERGENCY STOP SWITCH - Double Pole.
20	650-028	10	CABLE TIE MTG. - Push Fit.
21	651-101	1	Mains Inlet - 20A
22	651-109	1	Tab Terminal Block - 4 way
23	680-009	1	Mains Filter
24	401-02-040-006	13	Screw - Pan Pozi Taptite - M4 x 6 Lg.
25	401-02-040-010	26	Screw - Pan Pozi Taptite - M4 x 10 Lg.
26	401-04-006-312	4	Screw - Pan Pozi UNC Taptite #6-32 x 5/16"
27	402-02-040-010	2	Screw - Csk Hd. Taptite - M4 x 10 Lg.
28	402-02-040-016	2	Screw - Csk Hd. Taptite - M4 x 16 Lg.
29	461-01-040	6	NUT - Full - M4
30	481-040	4	WASHER - Plain - M4
31	485-040	1	Washer - Shakeproof - M4
32	652-043	1	SWITCH - Compressor - 240V Coil - 20A
33	652-011	1	SWITCH - System.
34	173-54-01	1	Shorting Link
35	613-023	1	Fuse 3.15A - 20mm x 5mm Fast Blow
36	681-011	1	Fuse 3.15mA - 20mm x 5mm Anti-Surge
37	681-019	1	Fuse 6.3A - 20mm x 5mm Anti-Surge
38	173-72-01	1	Label - Fuse Ratings



175-09-01 (Tilt Assembly)

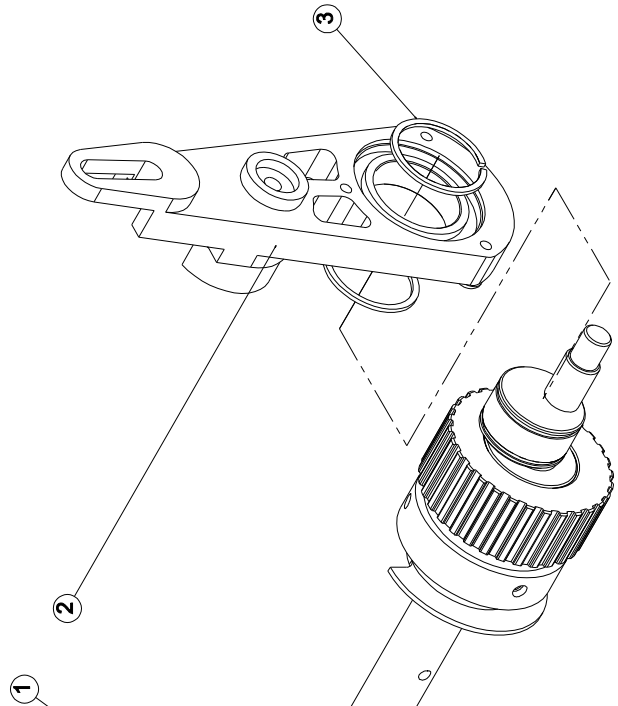
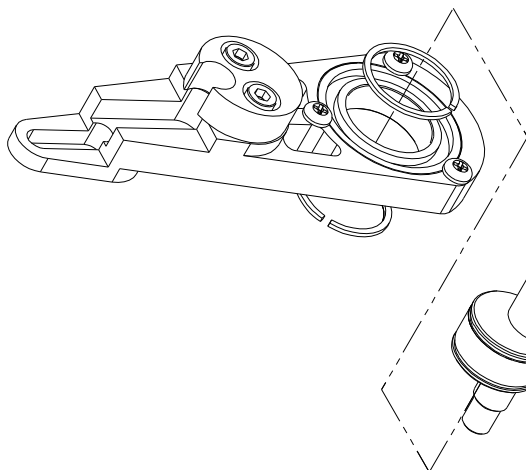
ITEM No.	PART No.	QTY.	DESCRIPTION
1	173-45-01	1	Pot & Lead Assy. - Tilt
2	175-046-01	1	MOUNTING PLATE - Tilt - DigiFold Mk2.
3	175-126-01	1	KNOB - Gap Set - DigiFold Mk2.
4	175-132-01	1	Shaft - Tilt Set
5	126-072	2	WORM - Gap Set.
6	604-031	4	DISC SPRING
7	605-004	1	Thrust Washer - Ø8 x Ø15.88 x 0.79
8	607-045	1	MULTI-BEAM COUPLER - Size 13
9	407-01-030-004	2	Screw - Socket Set Knurled - M3 x 4 Lg.
10	407-01-040-005	2	Screw - Socket Set Knurled - M4 x 5 Lg.
11	407-01-050-006	1	Screw - Socket Set Knurled - M5 x 6 Lg.
12	411-01-040-006	2	SCREW - Skt Set Dog Pt. - M4 x 6 Lg.



175-25-01 (Gap Set Assembly)

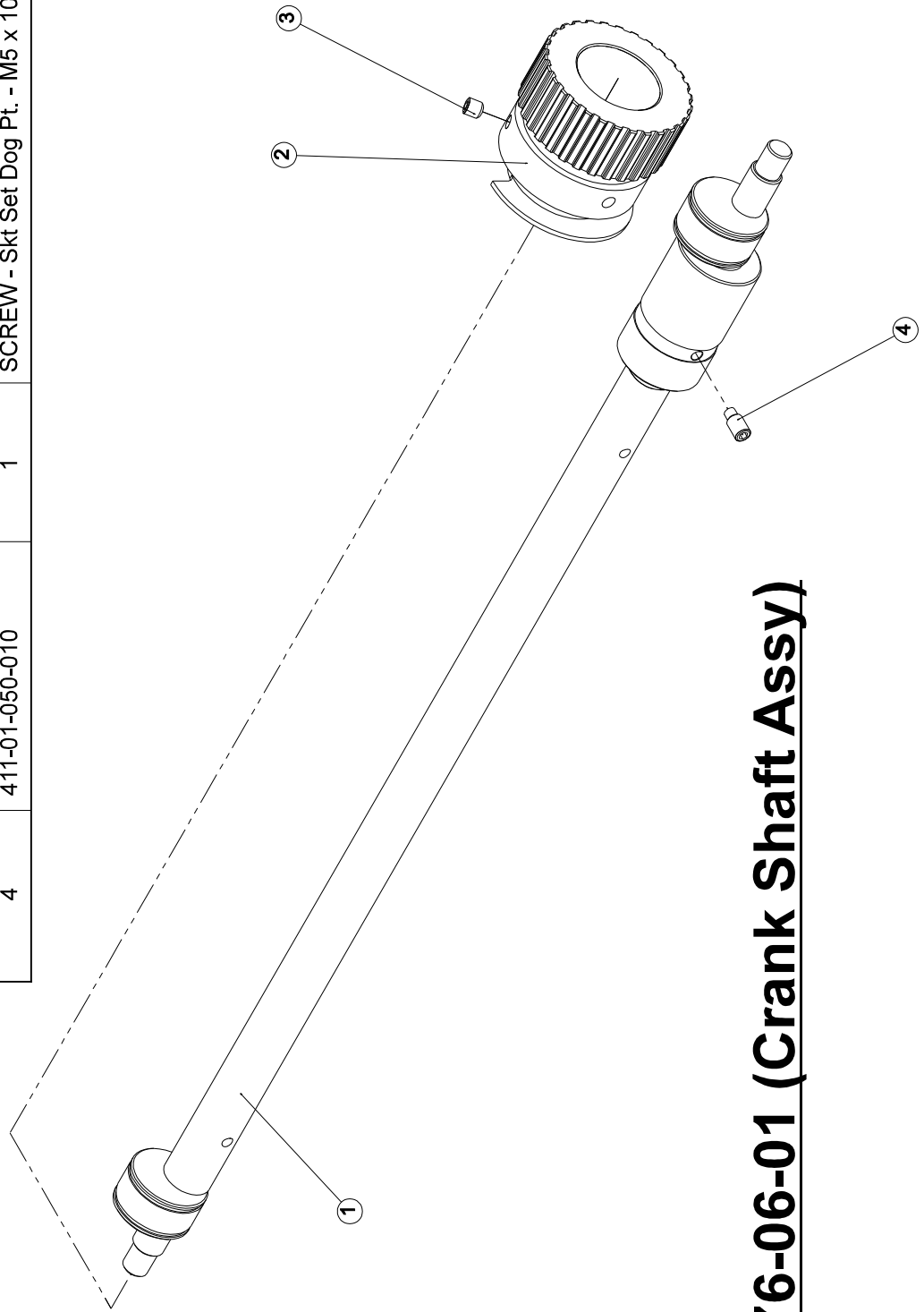
ITEMNo.	PARTNo.	QTY.	DESCRIPTION
1	126-072	3	WORM - Gap Set.
2	173-46-01	1	Pot & Lead Assy. - Gap 1
3	173-47-01	1	Pot & Lead Assy. - Gap 2
4	173-48-01	1	Pot & Lead Assy. - Gap 3
5	175-006-01	1	MOUNTING PLATE - Gap Set - DigiFold Mk2.
6	175-007-01	1	SHAFT - GAP SET - 1st Roller.
7	175-007-02	1	SHAFT - GAP SET - 2nd Roller.
8	175-007-03	1	SHAFT - GAP SET - 3rd Roller.
9	175-126-01	3	KNOB - Gap Set - DigiFold Mk2.
10	407-01-030-004	6	Screw - Socket Set Knurled - M3 x 4Lg.
11	407-01-040-005	3	Screw - Socket Set Knurled - M4 x 5Lg.
12	407-01-040-006	3	Screw - Socket Set Knurled - M4 x 6Lg.
13	411-01-040-006	3	SCREW - Skt Set Dog Pt. - M4 x 6Lg.
14	604-031	12	DISC SPRING
15	605-004	3	Thrust Washer - Ø8 x Ø15.88 x 0.79
16	607-045	3	MULTI - BEAM COUPLER - Size 13

ITEMNo.	PARTNo.	QTY.	DESCRIPTION
1	176-06-01	1	CRANK SHAFT ASSY - Dynamic
2	176-202-01	2	Power Link Assy
3	615-040	4	Retaining Ring - External - Ø25

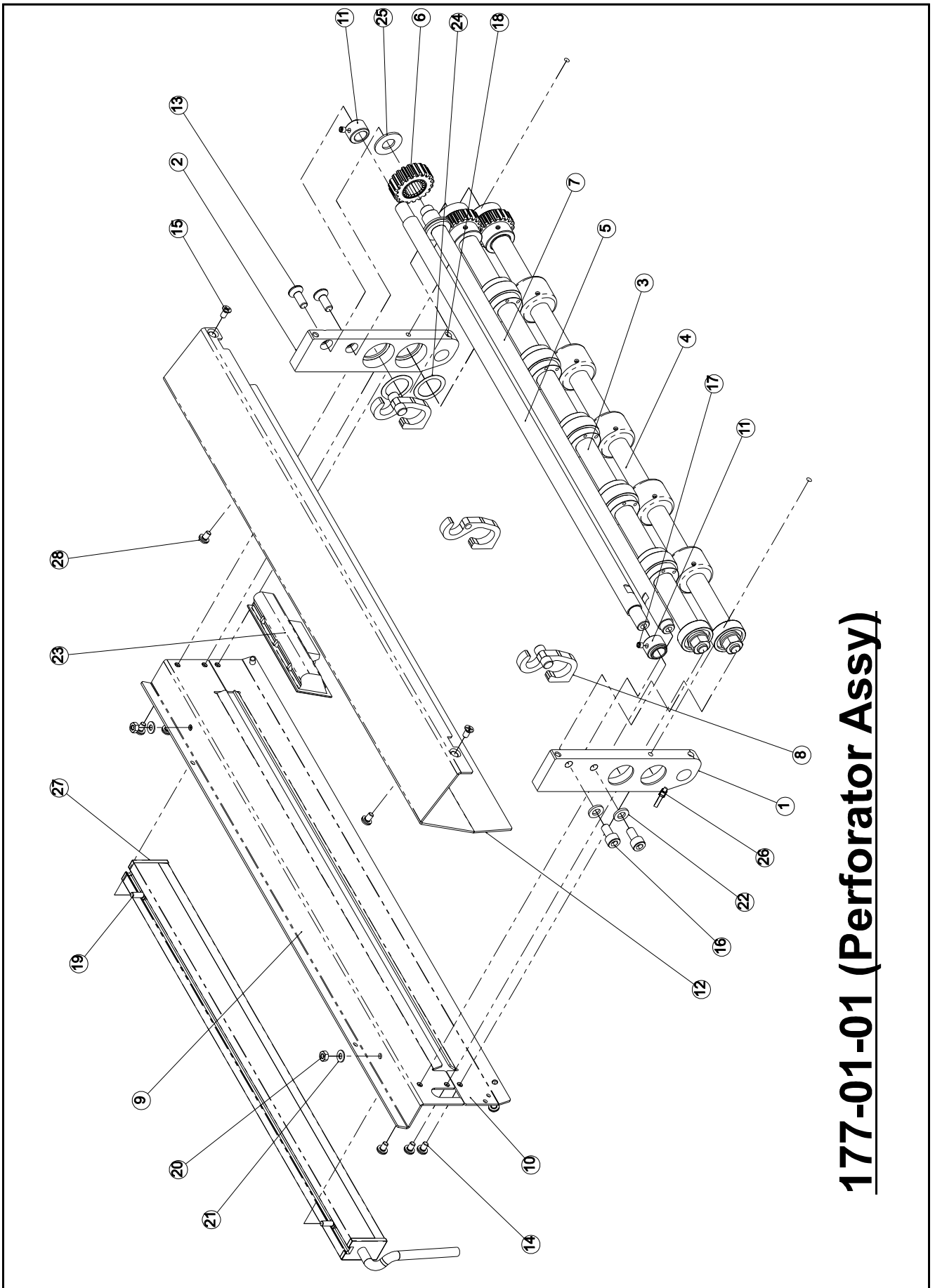


176-01-01 (Power Shaft Assy)

ITEM No.	PART No.	QTY.	DESCRIPTION
1	176-015-02	1	CRANK SHAFT - Dynacrase - 1 Piece
2	176-080-01	1	CRANK SHAFT PULLEY HUB - 30XL
3	409-01-050-005	1	Screw - Skt Set Screw - Flat Pt. - M5 x 5 Lg.
4	411-01-050-010	1	SCREW - Skt Set Dog Pt. - M5 x 10 Lg.

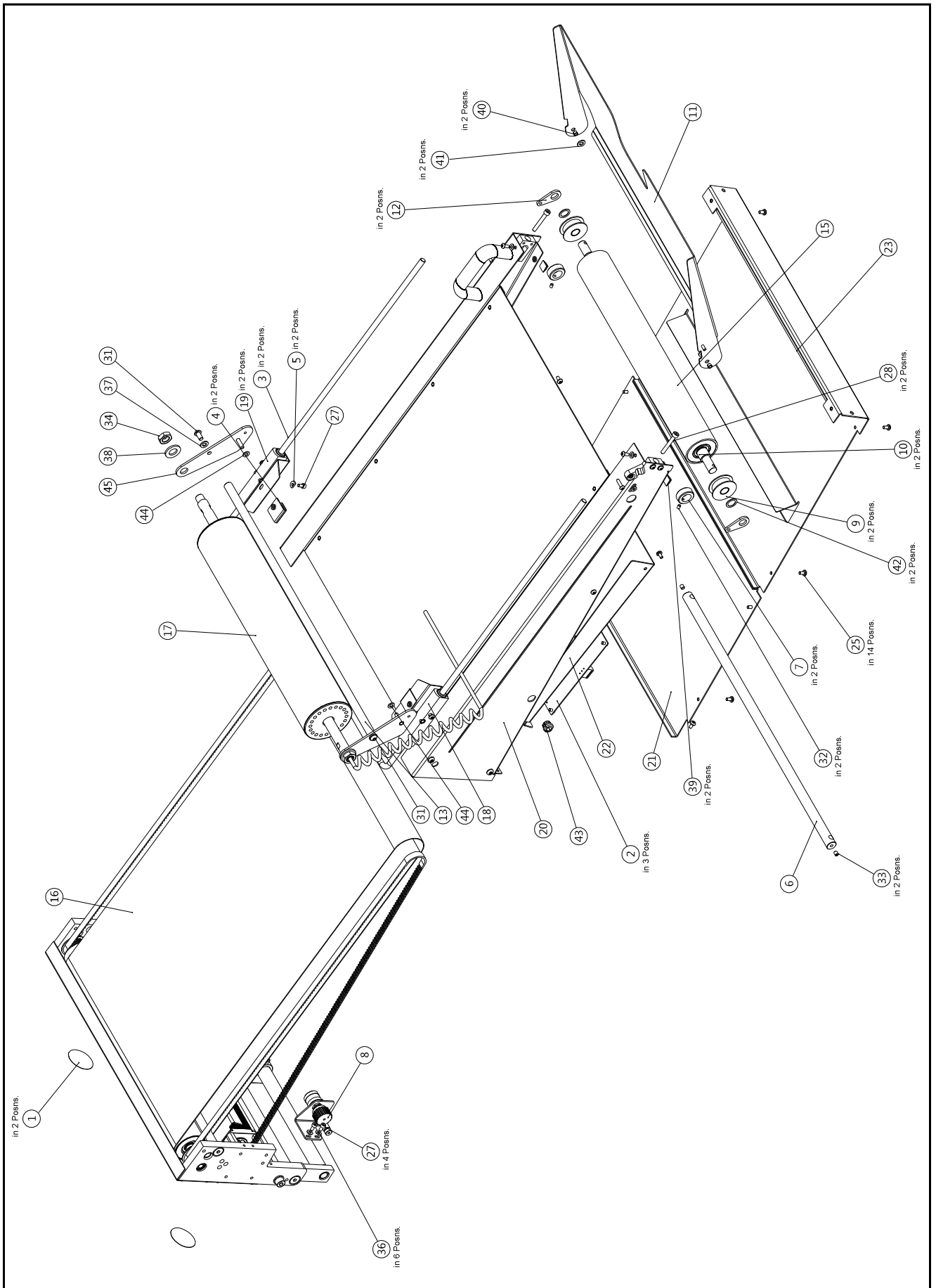


176-06-01 (Crank Shaft Assy)

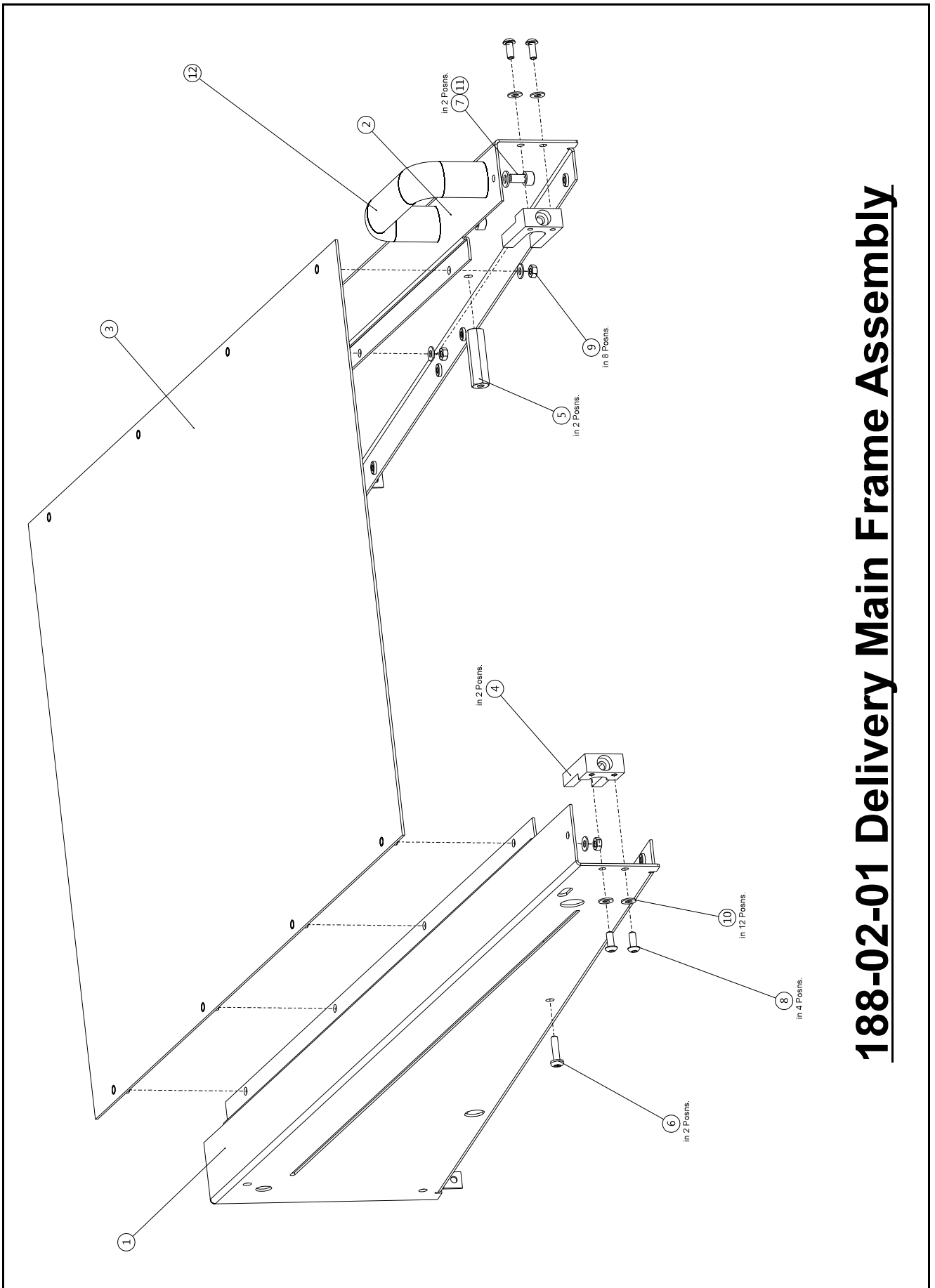


177-01-01 (Perforator Assy)

ITEMNo.	PARTNo.	QTY.	Description
1	177-001-01	1	Side Plate - Perf - Op Side
2	177-001-02	1	Side Plate - Perf - Lay Side
3	177-02-01	1	PERFORATOR SHAFT ASSEMBLY - Upper
4	177-02-02	1	PERFORATOR SHAFT ASSEMBLY - Lower.
5	177-002-01	1	TOP TIE BAR - Perf Unit.
6	177-03-01	1	PERFORATOR IDLER GEAR ASSY. - DigiFold Mk2.
7	177-04-01	1	PERF. IDLER TIE BAR ASSEMBLY - Digifold Mk2
8	177-05-01	3	PERF STRIPPER ASSEMBLY - DigiFold Mk2.
9	177-005-01	1	Anti - Static Mounting - Perf Unit
10	177-006-01	1	COVER - PERFORATOR - Bottom.
11	177-008-01	2	CAM - Perf. Gear Adjuster.
12	177-013-01	1	PERFORATOR COVER - DigiFold Mk2.
13	404-01-060-016	2	SCREW - Socket Countersunk Head - M6 x 16Lg.
14	401-02-040-006	8	Screw - Pan Pozi Taptite - M4 x 6Lg.
15	402-02-040-008	2	Screw - Csk Hd. Taptite - M4 x 8Lg.
16	403-01-060-012	2	SCREW - Socket Cap Head - M6 x 12Lg.
17	409-01-040-004	2	Screw - Socket Set - Flat Point - M4 x 4Lg.
18	411-01-060-012	2	SCREW - Skt Set Dog Pt. - M6 x 12Lg.
19	415-01-040-010	2	Hex Hd. Set screw - M4 x 10Lg.
20	461-01-040	2	NUT - Full - M4
21	481-040	2	WASHER - Plain - M4
22	481-060	2	WASHER - Plain - M6
23	601-134	1	HANDLE - Pocket Pull
24	604-102	2	WAVED WASHER.
25	605-037	1	NYLON WASHER - Ø10.36 X Ø22.23 X 1.52
26	613-027	1	TIE WRAP - Small.
27	626-007	1	ANTI - STATIC BAR
28	418-01-040-006	2	Earthing Screw - Pan Pozi Taptite - M4 x 6Lg.

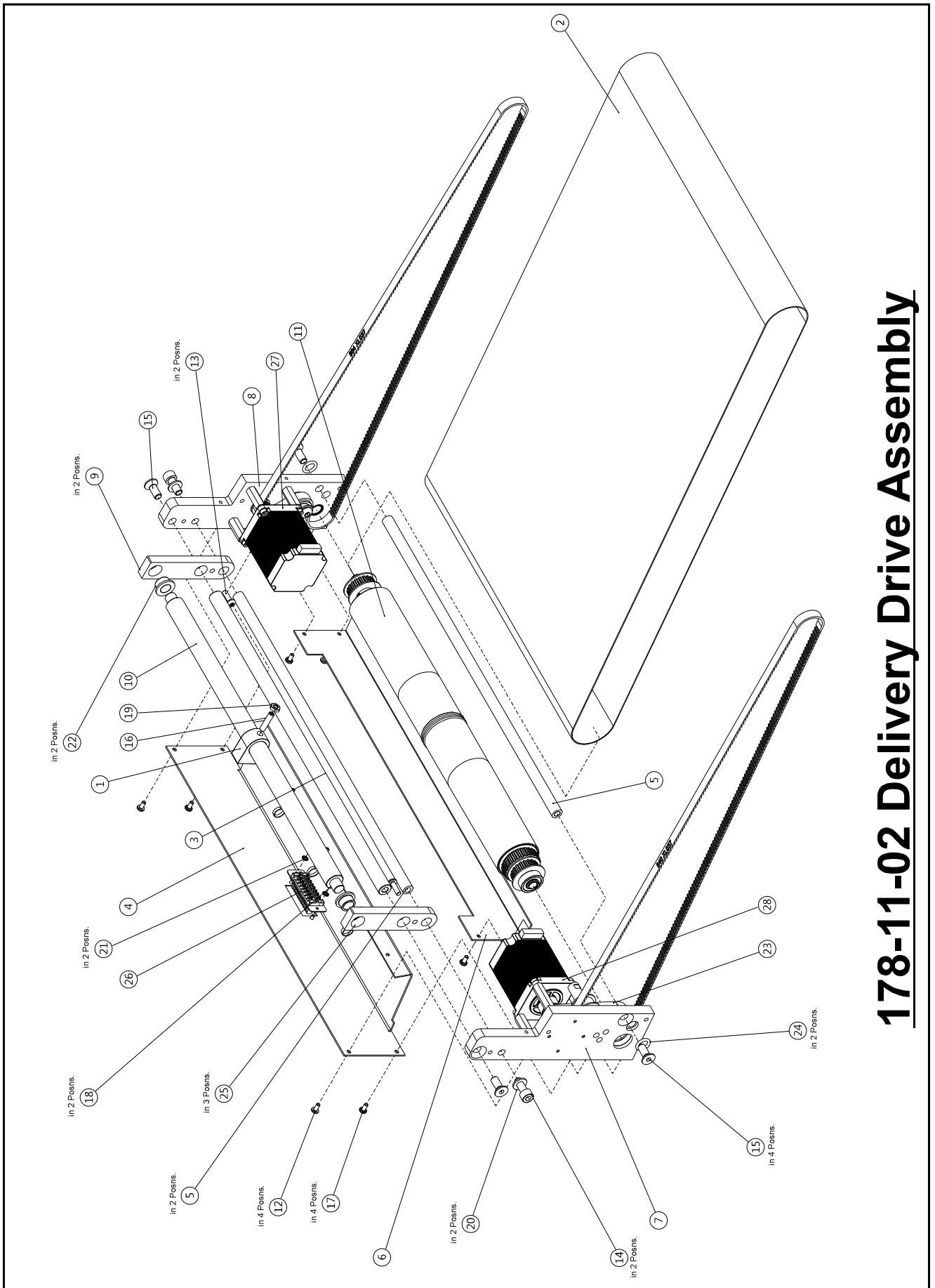


ITEMNo.	PARTNo.	QTY.	DESCRIPTION
1	173-018	2	DO NOT TOUCH_LABEL
2	174-06-01	3	Small Stepper Driver PCB Assy.
3	178-022-01	2	Roller Guide Bar
4	178-028-01	2	Belt Clamp plate - Delivery
5	178-029-01	2	D - Spacer - Belt Clamp
6	178-032-01	1	Roller Pivot Shaft - Delivery
7	178-033-01	2	COLLAR - Wheel Spacer.
8	178-04-01	1	Positioning Pot Assy
9	178-05-02	2	Idler Pulley Assy - Size 20
10	178-057-01	2	SPACER.
11	178-078-01	1	Stacker Pivot Plate
12	178-079-01	2	Stacker Lock Plate
13	178-081-01	1	Delivery Roller Tie Bar
14	178-082-01	1	Stacker Plate Clip
15	178-09-01	1	Delivery Idler Roller Assy
16	178-11-02	1	Delivery Drive Assy
17	178-16-01	1	Driven Roller 3"
18	178-17-01	1	Roller Guide Assy - Lay Side
19	178-17-02	1	Roller Guide Assy - Op Side
20	188-02-01	1	Delivery Main Frame Assy.
21	188-002-01	1	Delivery Stepper Cover
22	188-003-01	1	Inner Catch Tray
23	188-004-01	1	Delivery - Undercover
24	401-02-040-006	12	Screw - Pan Pozi Taptite - M4 x 6 Lg.
25	401-02-040-008	17	Screw - Pan Pozi Taptite - M4 x 8 Lg.
26	401-02-050-016	4	Screw - Pan Pozi Taptite - M5 x 16 Lg.
27	403-01-040-008	4	SCREW - Cap Hd. - M4 x 8Lg.
28	403-01-050-035	2	SCREW - Socket Cap Head - M5 x 35Lg.
29	405-01-040-010	2	SCREW - Socket Button Head - M4 x 10Lg.
30	405-01-040-016	2	SCREW - Socket Button Head - M4 x 16Lg.
31	405-01-060-012	2	SCREW - Socket Button Head - M8 x 12Lg.
32	409-01-040-006	2	Screw - Skt Set Screw - Flat Pt. - M4 x 6Lg.
33	409-01-050-006	2	Screw - Skt Set Screw - Flat Pt. - M5 x 6Lg.
34	462-01-120	1	NUT - Half - M12
35	464-01-040	3	NUT - NYLOC - M4
36	481-040	8	WASHER - Plain - M4
37	481-060	2	WASHER - Plain - M6
38	481-120	1	WASHER - Plain - M12
39	601-018	2	Square Foot - 12.6mm
40	603-041	2	SPIROLSPACER - Ø4 x Ø5.65 x 4 Lg.
41	605-021	2	Thrush Washer - Ø8 x Ø15.88 x 0.79
42	605-022	2	NYLON WASHER - Ø12.2 X 17.1 X 0.79
43	613-219	1	STRAIN RELIEF BUSH
44	481-050	2	WASHER - Plain - M5
45	178-076-02	1	Roller Guide Plate - Lay Side



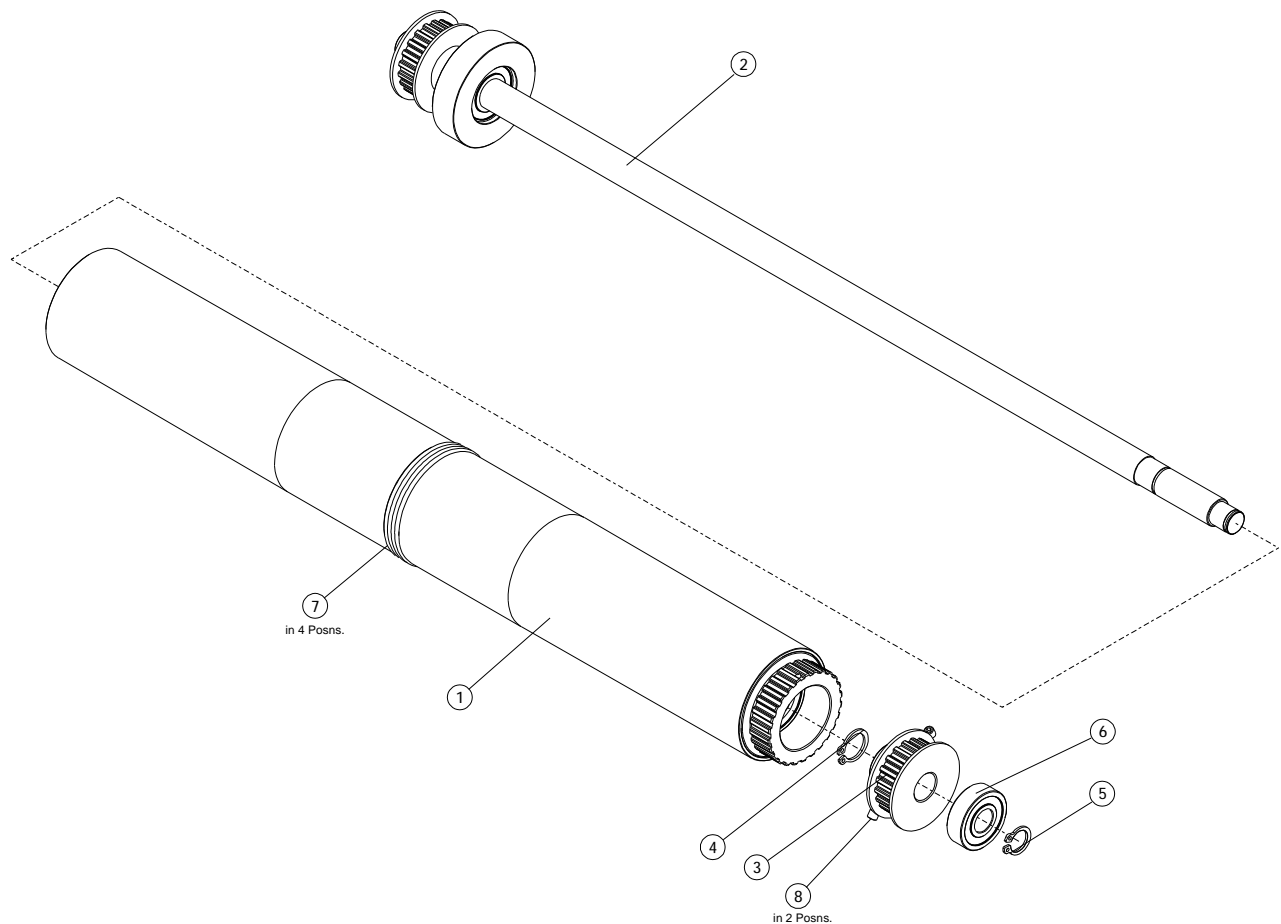
188-02-01 Delivery Main Frame Assembly

ITEMNo.	PARTNo.	QTY.	DESCRIPTION
1	188-001-01	1	Delivery - Lay Side
2	188-001-02	1	Delivery - Op. Side
3	178-002-01	1	Conveyor Bed
4	178-006-02	2	Tension Block
5	178-030-01	2	HEX PILLAR - M8 x 30Lg.
6	401-02-040-016	2	Screw - Pan Pozi Taptite - M4 x 16Lg.
7	403-01-050-010	2	SCREW - Socket Cap Head - M5 x 10Lg.
8	405-01-040-010	4	SCREW - Socket Button Head - M4 x 10Lg.
9	461-01-040	8	NUT - Full - M4
10	481-040	12	WASHER - Plain - M4
11	481-050	2	WASHER - Plain - M5
12	606-046	1	Delivery Grab Handle



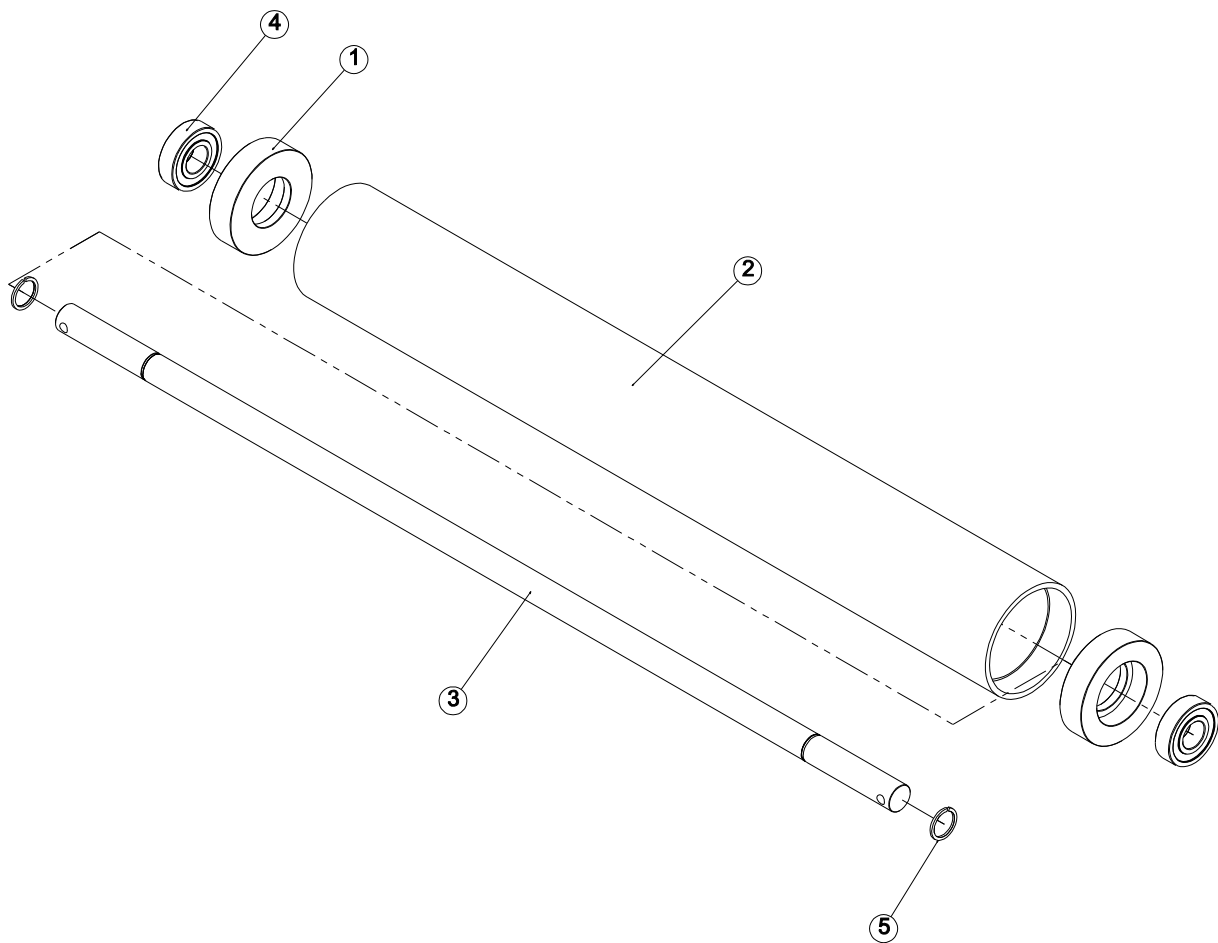
178-11-02 Delivery Drive Assembly

ITEM No.	PART No.	QTY.	DESCRIPTION
1	121-013-02	1	GAS STRUT EYE.
2	128-026-03	1	385 Belt - 2 Ply - Paper Transport
3	141-003-04	1	Tie Bar - Gas Spring - Digifold Mk2
4	178-005-02	1	Delivery End Cover
5	178-026-02	1	Sheet Guide
6	178-025-01	2	Tie Bar - Drive Assy
7	178-03-03	1	Stepper Plate Assy - Op Side
8	178 03 04	1	Stepper Plate Assy - Lay Side
9	178-051-01	2	Delivery Beam Extension
10	178-052-01	1	Action Shaft- Beam Extension
11	178-06-02	1	Crowned Drive Shaft Assy
12	401-02-040-008	4	Screw - Pan Pozi Taptite - M4 x 8 Lg.
13	401-02-050-016	2	Screw - Pan Pozi Taptite - M5 x 12 Lg.
14	403-01-080-020	2	SCREW - Socket Cap Head - M8 x 20 Lg.
15	404-01-080-020	4	SCREW - Socket Countersunk Head - M8 x 20 Lg.
16	409-01-060-025	1	Screw - Skt Set Screw - Flat Pt. - M6 x 25 Lg.
17	418-01-040-008	4	Earthing Screw - Pan Pozi Taptite - M4 x 8 Lg.
18	461-01-040	2	NUT - Full - M4
19	462-01-060	1	NUT - Half - M6
20	481-080	2	WASHER - Plain - M8
21	485-030	2	M3 Washer Shakeproof- Ext
22	602-172	2	Flanged Iglidur Bush - Ø12 x Ø16 x 10
23	607-005	1	100 XL Timing Belt
24	609-029	2	'O' Ring Ø8 x Ø3
25	650-028	3	CABLE TIE MTG. - Push Fit.
26	76-260	1	Delivery Connector & Lead Assembly
27	76-258	1	BELT DRIVE MOTOR
28	76-259	1	ROLLER POSITION MOTOR



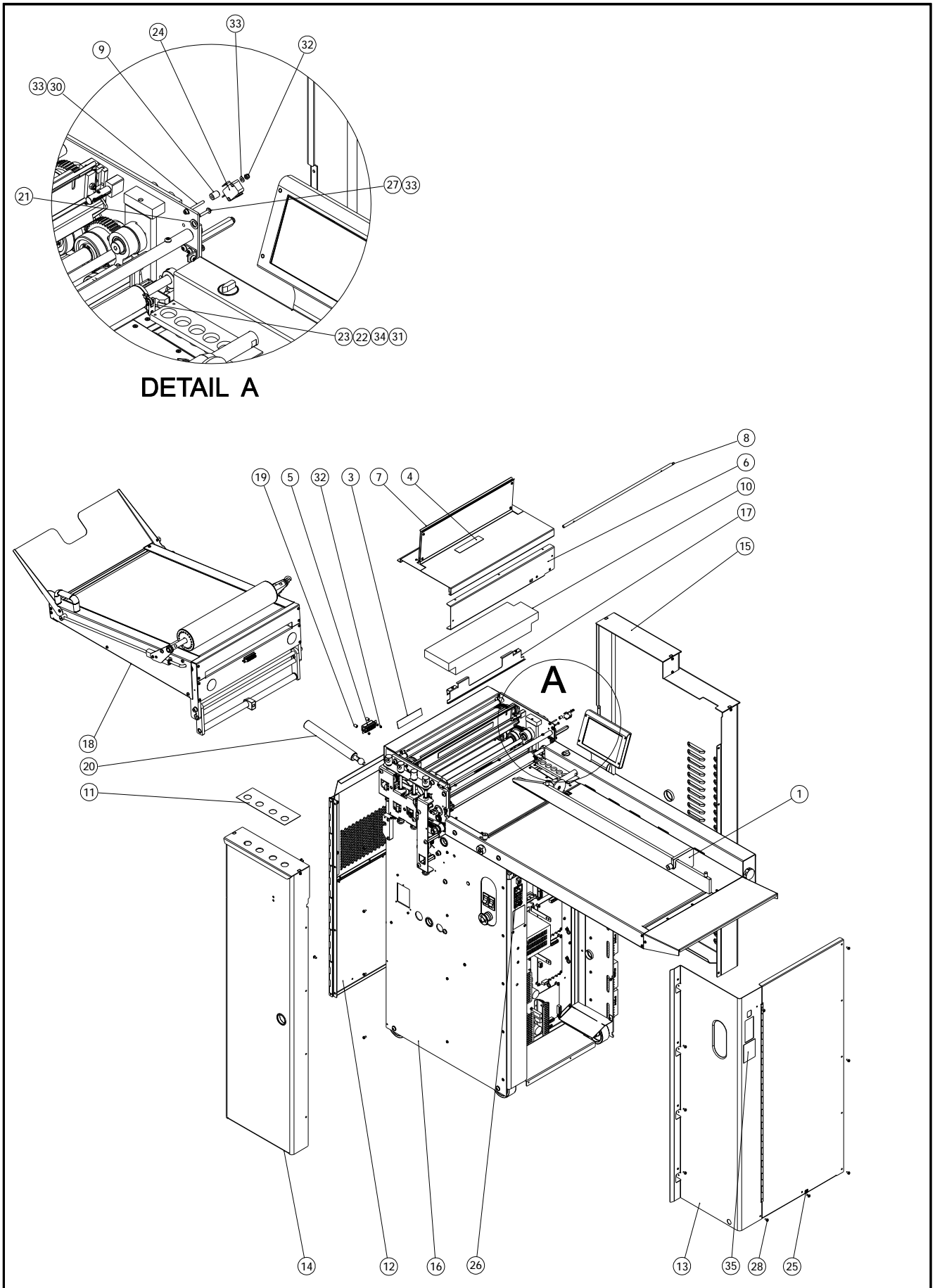
ITEMNo.	PARTNo.	QTY.	DESCRIPTION
1	178-07-02	1	Crowned Roller Assy
2	178-08-02	1	Crowned Roller Shaft Assy
3	178-027-01	1	Roller Drive Pulley - 20XL
4	615-015	1	CIRCLIP - External - Ø12
5	615-010	1	CIRCLIP - External - Ø10
6	602-001	1	BEARING - Deep Groove Ball - 6000-ZZ
7	609-031	4	'O' Ring
8	409-01-040-004	2	Screw - Skt Set Screw - Flat Pt. - M4 x 4Lg.

178-06-02 (Crowned Drive Shaft Assy)



ITEMNo.	PARTNo.	QTY.	DESCRIPTION
1	128-055	2	Bearing Plug - Idler Drum
2	128-058-02	1	Extended Belt Drum - Idler
3	178-021-01	1	Delivery Idler Shaft
4	602-003	2	BEARING - Deep Groove Ball - 6001-ZZ
5	615-039	2	RETAINING RING - External - Ø12

178-09-01 (Delivery Idler Roller Assy)



ITEM No.	PART No.	QTY.	Description
1	94-058	1	Backstop Assembly - Screw Clamped.
2	173-027-01	1	Label - Digifold Pro
3	123-038	1	Label - Anti-Static / Sharp Blades
4	123-059	1	Label - Safety Warnings
5	76-261	1	Delivery Roller Position Lead
6	173-010-01	1	Entry Guard
7	173-011-01	1	Top Cover Unit
8	173-012-01	1	Shaft Top Cover
9	173-013-01	1	Spacer
10	173-016-01	1	Top Cover Accoustic Lining
11	173-017	1	Gap set Label
12	173-02-02	1	Rear Cover Assembly - With Door
13	173-03-02	1	Control Cover Assembly
14	173-04-01	1	Operator Side Door Assembly
15	173-05-02	1	Layside Door Assembly
16	175-01-05	1	Digifold Mk2 Mechanism
17	176-179-01	1	Sheet Guide Assembly
18	188-01-01	1	Delivery Assembly
19	603-079	2	Spacer
20	604-103	1	Gas Spring - Locking
21	605-056	2	Thrust Washer - Ø12.7 x Ø8.00 x 0.81
22	613-027	2	Tie Wrap - Small
23	613-339	2	Cable Tie Mounting
24	613-351	1	Microswitch
25	613-498	4	Earth Label
26	651-121	1	CONNECTOR - Ethernet
27	401-02-030-016	1	Screw - Pan Pozi Taptite - M3 x 16 Lg.
28	401-02-040-008	34	Screw - Pan Pozi Taptite - M4 x 8 Lg.
29	401-02-040-010	1	Screw - Pan Pozi Taptite - M4 x 10 Lg.
30	403-01-030-030	1	Screw - Socket Cap Head - M3 x 30 Lg.
31	461-01-040	2	Nut - Full - M4
32	464-01-030	3	Nut - Nyloc - M3
33	481-030	5	Washer - Plain - M3
34	481-040	2	Washer - Plain - M4
35	173-72-01	1	Label - Fuse Ratings