

EBA 4350 (TABLE TOP MODEL)

max.
40
mm

Convenient office guillotine with electro-mechanical blade drive, automatic clamp and EASY-CUT – for formats up to A3.

← **43 cm** →

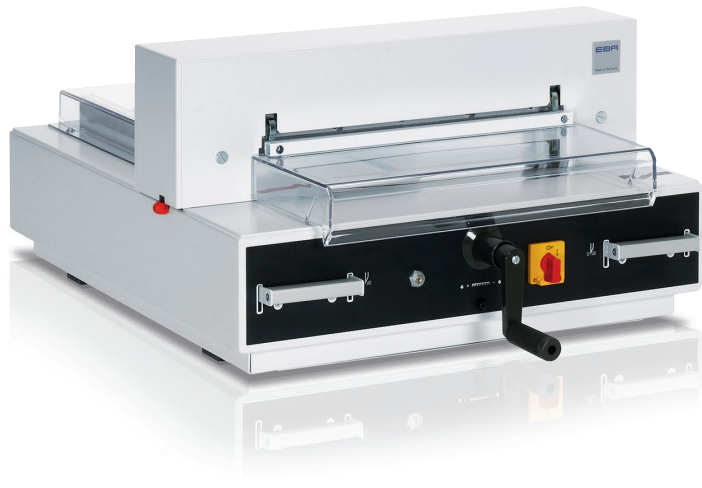
Cutting length	430 mm
Cutting height	40 mm
Narrow cut	35 mm
Table depth	435 mm



optional stand



optional cabinet



Technical specifications

Power	230 V / 50 Hz / 1~
Capacity	0.45 kW



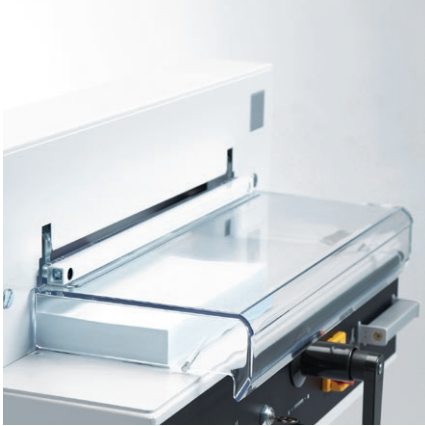
Dimensions	355 x 640 x 870 mm (H x W x D)
	height with stand 1085 mm
	height with cabinet 1080 mm
Weight	86 kg table top model
	96 kg with stand
	118 kg with cabinet

Product characteristics

Equipped with the new, patented EASY-CUT blade activating bars for convenient and safe cutting. Comprehensive SCS safety package: hinged, electronically controlled safety guard on the front table; transparent safety cover on the rear table; main switch and safety lock with key; electronically controlled true two-hand operation; 24 volt control (low voltage); patented EBA safety drive; automatic blade and clamp return from every position; disc brake for instant blade stop; blade changing device with covered cutting edge; blade depth adjustment from the outside of the machine; easy blade change from the front of the machine without removing covers; cutting stick can be turned or replaced easily from the outside of the machine. Electro-mechanical blade and clamp drive. Cuts up to 500 sheets of paper (70 g/m²) or bound brochures up to 40 mm. Blade made of German high quality steel. Solid steel blade carrier. Adjustable blade guides made of hardened steel. Precision side lay. Spindle guided backgauge with hand crank. Digital measurement readout for backgauge positioning (cm or inches) on the front table. Patented automatic clamp. Optical cutting line with bright and durable LEDs. Solid all-metal construction. Designed as table top machine, a stand or a cabinet with storage shelf are available as an option (at an extra cost).

EBA 4350 (TABLE TOP MODEL)

Features



TRANSPARENT SAFETY GUARD

A cut can only be executed, if the hinged, electronically secured safety guard on the front table is closed.



HAND CRANK

Convenient setting of the backgauge via hand crank in combination with the digital measurement readout on the machine table. The precision backgauge spindle guarantees exact cuts.



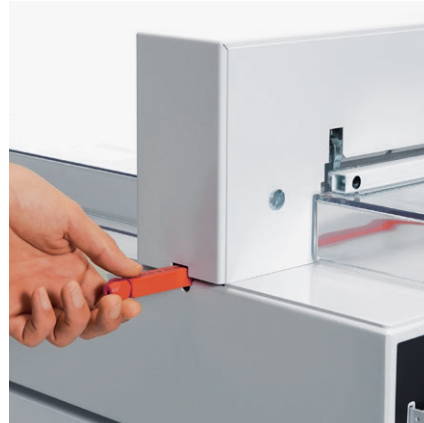
PATENTED EASY-CUT ACTIVATING BARS

A cut can be executed conveniently by means of the patented EASY-CUT blade activating bars, which guarantee a safe two-hand operation.



DIGITAL MEASUREMENT READOUT

Easy-to-read digital display on the front table with switch-over from mm to inches by a push of a button.



CUTTING STICK CHANGE

Turning or exchanging the cutting stick can easily be managed from the outside of the guillotine without using any tools.



SAFE BLADE CHANGE

Safe and convenient blade change without removing covers. Blade changing device covers cutting edge of blade to protect the operator.

