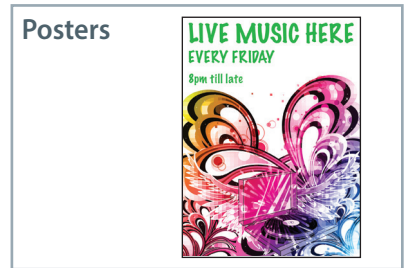


Non-stop quality  
and efficiency.

**LINEA ENCAPSULATION SYSTEMS**



QUALITY

EASE

DESIGN

INNOVATION

SUPPORT

PERFORMANCE

VERSATILITY

FLEXIBILITY

The Linea™ systems have been designed to work the way you do – non-stop.

Ready to roll in just a few minutes, they can easily cope with prolonged, continuous runs and can handle everything from small cards to long banners, posters, notices as well as maps, signage, photos and more.

Adaptable and compact, the Linea™ systems have been intelligently designed with smart features and simple, easy-to-use controls.



▲ DH-1100

# Linea non-stop encapsulation enhances your

## Smart features

They can be used as a desktop or free-standing system, ideal for busy office environments such as schools, councils, copy shops or any general business.

The Linea™ is solidly built from all-metal components with heavy duty motors and large diameter rollers to withstand the rigours of continuous operation and a tough working schedule.

## Cost-effective quality

The Linea™ comes in four sizes from A3 to A0, so there's a system to make sure you can keep your finishing costs in-house, saving time and costly outsourcing.

The finish quality is superb, you can always rely on the Linea™ to enhance and protect.

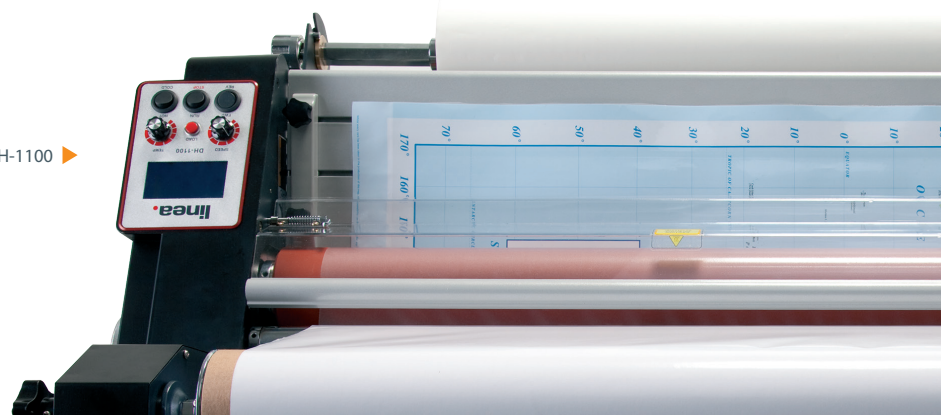


▲ DH-650



▲ DH-460

DH-1100 ▶







### ◀ Gloss over quickly, matt in minutes

Choosing a finish is simplicity itself – face up for matt, face down for gloss, all with a single pass.

You can encapsulate with all thicknesses – including 35, 75, 125 and 250 microns roll of film, giving you a finish of up to 500 micron.

### ▶ Simple but complete control

The easy-to-use control panel takes virtually no training, yet it offers you complete control over every job.



media.



### ▶ Perfect pressure

The rollers apply even pressure to your prints, giving you a perfect, permanent encapsulation every time.

Lifting up the spring loaded rollers allows you to mount board up to 5mm thick.



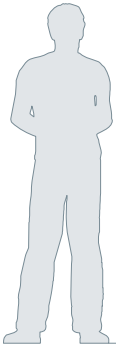
### ▶ Safety as standard

Every system comes with a safety guard and a separate hand safety trimmer to ensure a safe working environment.



“ The Linea has transformed everything we do in school – we now encapsulate banners, posters and notices to a lasting quality we’d never dreamed of before. ”

- quick set-up
- suitable for all print types
- feed guides for accurate register



## Key features

	DH-360	DH-460	DH-650	DH-1100
Continuous Roll Fed System	•	•	•	•
Adjustable Speed and Temp Control	•	•	•	•
Attached Safety Guard	•	•	•	•
Anti Jam Reverse Mode	•	•	•	•
Easy Load Override	•	•	•	•
1" (25mm core)	•	•	•	-
2" (57mm core)	-	-	-	•
3" (77mm core)	-	-	-	•
Encapsulation (35 to 250 microns)	•	•	•	•
Pressure Sensitive Film Lamination	-	-	-	•
Take-up Unit for Pressure Sensitive Film	-	-	-	•
Mounting (up to 5mm)	•	•	•	•
Stand with Film Holder Tray	-	○	○	•

• Yes - No ○ Optional



“ My Linea gives me complete control over the timing and quality of my print finishing, and I can encapsulate anything from small cards to posters in-house without delay. ”

- up to 1.6m/min
- fast warm-up time
- from business cards up to A0 prints
- easy-to-use controls
- compact footprint

## Specifications

	DH-360	DH-460	DH-650	DH-1100
Max. Encapsulating Speed (m/min)	1.4	1.4	1.4	1.6
Max. Encapsulation Film Width (mm)	340	460	650	1080
Mounting Thickness (mm)	5	5	5	5
Warm-up Time (mins)	10	10	10	15
Temperature Range (°C)	0-140	0-140	0-140	0-140
Core Size (mm)	25	25	25	57 + 77
Power Supply AC (V)	220/240	220/240	220/240	220/240
Frequency (Hz)	60	60	60	60
Power Consumption (W)	700	940	1600	2700
Overall Dimensions - Width (mm)	640	760	940	1370
Overall Dim. - Depth x Height (mm)	420x310	420x310	420x310	420x1220
Gross Machine Weight (kg)	30	45	85	200
Warranty	1 year	1 year	1 year	1 year

## Accessories

	DH-360	DH-460	DH-650	DH-1100
Stand	-	•	•	S
Additional Mandrels	•	•	•	•
Hand Safety Trimmer	S	S	S	S

• Yes - No S Standard

FRESH CONTROL

EFFECTIVENESS



▲ DH-650



▲ DH-1100

Growing your business ▶

Quite simply, your printer has got bigger over the years, so your finishing equipment needs to grow – a Linea™ system will help you increase the amount of work you do without increasing your costs, because you're bringing it all in-house.



media, giving it long lasting protection.

Trimfast Rotary Trimmers

	RO3016	RO3018	RO3919	RO3020	RO3021	RO3022	RO3026	RO3027
Max. Trimming Length (mm)	330	360	480	670	960	1300	1500	2000
Cutting Capacity (mm)	0.7	1.5	1.5	1.2	1.0	0.7	0.7	0.7
Sheets Cutting Capacity	7	15	15	12	10	7	7	7
Table Size - Length x Width (mm)	435x210	546x315	656x315	856x315	1146x315	1486x315	1695x315	2195x315
Stand and Waste Catcher	-	-	-	-	S	S	S	S

S Standard - No

CONSUMABLES

		RO3016	RO3018 to 27
Carbide Blade	ROCB	-	●
Carb. Blade & Head	ROCH	-	●
Carb. Blade/Head Unit	ROCB16	●	-

● Yes - No



▲ RO-3026





Premium Brand Laminating Supplies

## BOSS encapsulating films

Film Finishes

Roll Width	Gloss			Matt		
	1" core	2" core	3" core	1" core	2" core	3" core
230mm	•	•	-	•	•	-
305mm	•	•	-	•	•	-
320mm	•	•	-	•	•	-
455mm	•	•	-	•	•	-
635mm	•	•	-	•	•	-
685mm	•	•	-	•	•	-
800mm	-	•	•	-	•	-
915mm	-	•	-	-	•	-
965mm	-	-	•	-	-	-
1040mm	-	•	•	-	•	•
1065mm	-	•	•	-	•	•
1295mm	-	-	•	-	-	•
1395mm	-	-	•	-	-	•

• Yes - No Non-exhaustive list. Consult us for full stock and availability.

“ It’s true that Vivid provide excellent machines, but their supplies are also second to none. Whatever you need, they’ll get it to you. ”

- Boss® premium brand encapsulating film range
- finishes available:  
Gloss  
Matt
- 1", 2" & 3" cores



MATRIX LAMINATING SYSTEMS



EASYMOUNT WIDE FORMAT SYSTEMS



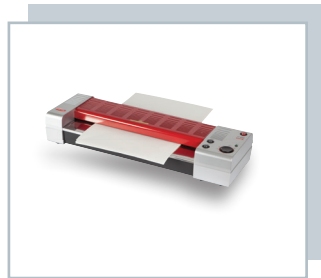
MAGNUM BINDING SYSTEMS



MAGNUM CREASING SYSTEMS



LINEA ENCAPSULATION SYSTEMS



PEAK POUCH LAMINATING SYSTEMS



TRIMFAST TRIMMING & CUTTING SYSTEMS



BOSS FILM SUPPLIES

Vivid design and manufacture a wide range of laminating systems, specialising in function, style and reliability.

For years, we have been leading the field with our innovative product development, successfully building our brands and customer relationships that help us to introduce unique products in the marketplace.

So if you're looking to improve your finishing, start by calling us.

Telefon: +46 8 602 50 00 | Fax: +46 8 722 99  
70 | Besöksadress: Telefonvägen 30  
| SE-126 26 HÄGERSTEN | SWEDEN |  
info@pdfab.se