

Morgana EvaBind Plus



The rapid increase in short run digitally printed books has fuelled the need for a quick, compact and easy to use Perfect Binding machine. The Morgana EvaBind Plus is ideal for the short to medium run environment, offering a simple but highly effective soft cover book production system. With the professional multi-layer glue assembly, including side glue rollers, up to 240 books can be produced per hour.

The system is controlled and operated through a central operator panel. By pressing the Start button the binding process runs in fully automatic mode. A fume exhauster is integrated and can be connected with a flexible hose to any outlet.

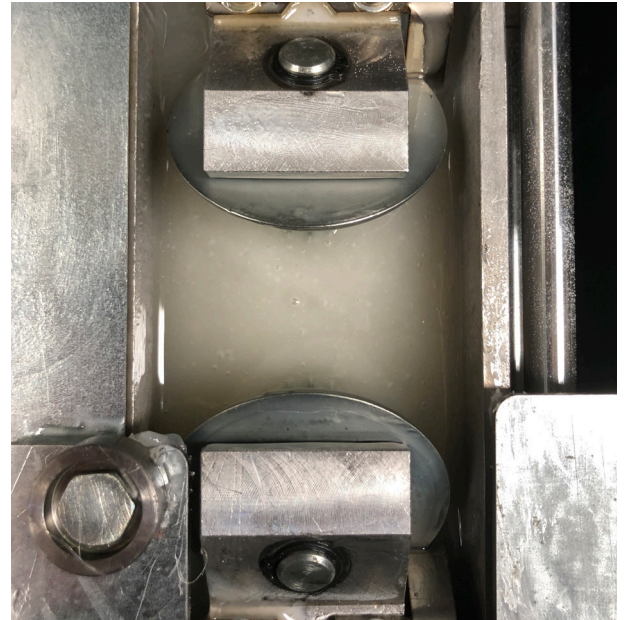
The unique spine preparation with a new powerful slitting, sheet-fanning and dedicated side gluing device allows the glue to penetrate for maximum adhesion for the sheets to be bound.

An integral dust extractor with bag comes as standard to catch any dust from the milling process. The binding method can be selected for padding or cover binding.

Technical Specifications

The sheets to be bound are held tightly in the clamp of the binding carrier by a pneumatic drive system. The clamp moves across the slitting/fanning device (on/off selectable) and the glue assembly into the cover-clamp section.

A pneumatic driven cover attachment and side-pressing unit finishes the book for a professional appearance. The cover attachment can be set up in relation to thickness of spine and substrate of cover, while the pneumatic system is silent running.



Side glue rollers

Features include

- Book or block binding
- Dedicated side glueing
- Adjustable press station
- LCD -Display
- Batch counter
- Air pump
- Fume exhauster
- Dust extractor
- Spine preparation slit (on/off)
- Programmable press time
- Up to 240 books per hour
- Cabinet

EvaBind Plus	
Maximum book size	320mm x 220mm
Book thickness	2-50mm
Cover size	330mm x 480mm
Warm up time	50-60mins
Books per hour	Up to 240
Binding system	Hot melt (EVA)
Display	LCD
Glue application system	2 application rollers, 1 scraper roller, side glueing rollers
Dimensions	L 1440mm x W 510mm x H 1070mm
Weight	255kgs (net)
Power requirement	240v 50/60hz

Note: the production speed varies according to material size

*Disclaimer As part of our continued product improvement plan, specifications and information published here are subject to change without notice. All specifications are dependent on application, type of stock, temperature, RH and print engine used. Specifications quoted were measured on uncoated and unprinted stock. E & OE.