



Hollow milk chocolate egg (77%) containing solid milk chocolate egg in a chip sugar shell.

Ingredients: MILK, sugar, cocoa mass, cocoa butter, vegetable fat (palm, shea), skimmed milk powder, whey permeate from milk, emulsifiers (E442, E470), MILK fat, modified starches (maize, tapioca), flavorings, malic acid, citric acid, carboxylic acid, sweetener, red, carotenes, paprika extract. May contain nuts. MILK CHOCOLATE: MILK SOLIDS 14% MINIMUM, COCOA SOLIDS 25% MINIMUM, MILK CHOCOLATE: MILK SOLIDS 20% MINIMUM, ACTUAL 23%, COCOA SOLIDS 20% MINIMUM, COCOA SOLIDS 20% MINIMUM, COCOA SOLIDS 20% MINIMUM.

**Nutrition Information**

Per 100 g	% Reference Intakes
Energy	2200 kJ / 524 kcal
Fat	29 g
of which Saturates	1.6 g
Carbohydrate	60 g
of which Sugars	59 g
Fibre	2.0 g
Protein	6.4 g
Salt	0.22 g

\*Reference intake of an average adult (8400 kJ / 2000 kcal)

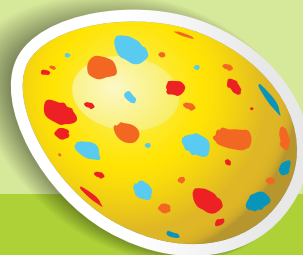
Product may suffer some scuffing in transit. Made under licence from Cadbury UK Ltd. We are passionate about our great quality Cadbury products. Not completely satisfied? Please contact us: Freephone 0800 818181 (UK only).

Mondelēz UK, PO Box 7008, Birmingham, B39 2PT  
Mondelēz Ireland, Freephone 1-800-457878  
Malahide Road, Coolock, Dublin 5.  
[www.cadbury.co.uk](http://www.cadbury.co.uk)

**e 97 g**

BEST BEFORE AND STORAGE INSTRUCTIONS SEE BASE.

**PARTNERING WITH HARROGATE FOUNDATION**  
[WWW.COCCOLIFE.ORG](http://WWW.COCCOLIFE.ORG)



Welcome to  
**HARROGATE**

Welcome to  
**HARROGATE**  
**NORTH**  
**PRINT & FINISH**



**NORTH**  
**PRINT & FINISH**  
Flatbed **Cutters**  
A cutting solution  
for all applications



[www.plockmaticgroup.com](http://www.plockmaticgroup.com)

1090418



