
ColorCut SC6500

Unpack and Installation Instructions

Doc number: T09375_EN_B

Date: 3 January 2024

1 Unpack and Installation Instructions

1.1	Unpack Instructions	1-2
1.2	Installation Requirements	1-4
1.2.1	Minimum space requirements	1-4
1.2.2	Power Requirements.....	1-5
1.2.3	Workstation Hardware Requirements	1-5
1.3	Installation Precautions.....	1-6
1.4	ColorCut Pro Installation.....	1-8
1.4.1	Accessory check	1-8
1.4.2	Cutter preparation	1-9
1.4.3	Fuse replacement (if required)	1-13
1.4.4	Tool Carriage and Tools installation	1-14
1.5	Software installation.....	1-16
1.5.1	ColorCut Pro Installation	1-16
1.5.2	ColorCut Pro Activation	1-20
1.6	Connecting and powering on the cutter	1-21
1.6.1	Turning on the cutter	1-21
1.6.2	Connecting to computer	1-21
1.6.3	USB or Ethernet Connection confirmation	1-22
1.7	Checking the installation.....	1-23
1.7.1	Test Cut	1-23
1.7.2	Calibration of the Vision3 sensor offset to the Cutting Blade	1-25

1.1 Unpack Instructions



1. Remove the straps [A] and boxes [B] on top of the main crate.



2. Remove black screws on top of the lid and remove the lid [C].



3. Remove black screws along the bottom of the crate.



4. Remove all the loose pieces [D] inside the box.



5. Lift the crate [E] up to remove it.



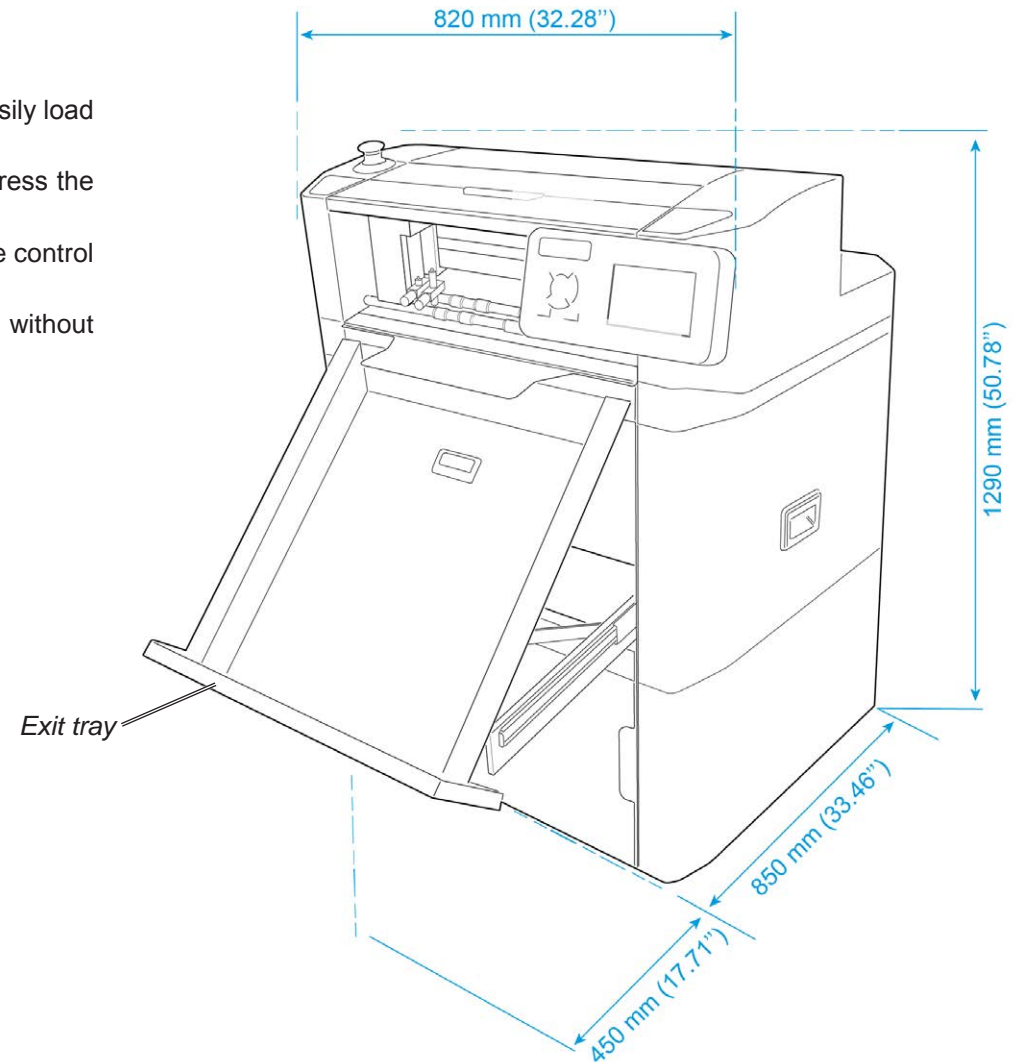
6. Remove the plastic wrap [F].

Intentionally blank

1.2 Installation Requirements

1.2.1 Minimum space requirements

1. Working Space is different to Machine dimensions.
2. Ensure there is sufficient space at the rear of the SC6500 to easily load sheets and adjust the media side guides.
3. Ensure there is sufficient space above the SC6500 to easily press the Emergency Stop Switch in case of a problem.
4. Ensure there is space by the side of the machine to operate the control panel and the feeder control button.
5. Ensure there is space for the retractable exit tray to be opened, without causing an obstruction to walkways.



1.2.2 Power Requirements

1. Ensure that a power outlet is available nearby the system, fused to withstand the system's combined rated current.
2. The current consumption can be seen on the machine labels. For example: if the machine label says "100-240 V, 3.4-1.7 A" then the rated current is 3.4 A at 100 V and 1.7 A at 240 V.
3. Make sure to route power cords to avoid people from tripping on them.
4. Avoid using excessively long extension cords.
5. Make sure the machine is grounded.

1.2.3 Workstation Hardware Requirements

Compatible Vector Programs

	Adobe Illustrator® *	Corel Draw® **
PC Windows	CS6; CC	X4 - X8
	CC 2014	2017 - 2023
	CC 2015	
	CC 2017	
	CC 2018	
	CC 2019	
	CC 2020	
	CC 2021	
	CC 2022	
	CC 2023	
Mac OS	CC 2017	
	CC 2018	
	CC 2019	
	CC 2020	
	CC 2021	
	CC 2022	
	CC 2023	

*Does not support illegal copies of Adobe Illustrator

**Full version only. Does not support "Home and Student", "Essentials" edition or illegal copies of CorelDRAW

1. Multicore Intel processor with 64-bit support
2. Windows 10 Professional / Windows 11 Professional x64 bit
3. 4 GB of RAM (8 GB recommended (As supplied with ColorCut Pro Server Station))
4. Minimum display resolution: 1024x900
5. Recommended Display Resolution: 1280x960 or higher.
(Screens with resolutions such as: 1152x900, 1024x900, 1280x960, 1440x900, 1440x960, 1440x1024, 1440x1080, 1600x900, 1600x1080, 1600x1280, 1920x1080 or higher)
6. 2x available USB Ports (Note KB & Mouse often use a port each so factor this in)

PC directly connected to ColorCut must have Wi-Fi capability for Direct connection to Vision3 Camera Sensor. (for PC users with no Wi-Fi currently a USB Wi-Fi dongle included)

Compatible OS Versions

PC Windows 10 Pro or 11 Pro – 64 bit

Mac OS version 10.11 (El Capitan) - Mac OS version 13 (Ventura)

1.3 Installation Precautions

Safety measures

Please read the information and safety measures carefully prior to installation and initial operation of the unit.

- Do not place any magnetic objects in the vicinity of the cutting head; otherwise uniform contact pressure may not be ensured.
- Do not remove the connection cable to the computer while cutting is in progress.
- Relieve the pressure on the pressure rollers when not in use by moving the pressure lever up.
- Do not open or reach into the unit when it is connected to electricity supply.
- Never open the casing and do not make any modifications to the unit yourself.
- Ensure that neither liquids nor metal objects are put inside the SC6500.
- Ensure that the wall socket used is grounded.
- Ensure that the connected voltage (100-240V) does not deviate by more than $\pm 10\%$. Otherwise install a voltage stabiliser.
- Remove the power plug from the unit if it will not be in use for a longer period of time.
- Never reach into the unit in the vicinity of the blade holder during the cutting operation.
- Stop any cutting jobs in progress before re-adjusting the blade holder.
- Always ensure that the Auto Sheet Cutter remains inaccessible to children during operation and never leave the unit or individual parts of it switched on without supervision.
- Do not touch the tip of the cutting blade to avoid injury.
- Always place the unit on a stable base or use the supplied stand to prevent it from falling down.
- Disconnect from the power supply during thunderstorms; it can be damaged or destroyed by electrical surges caused by lightning.
- Do not sit or step on the stacker tray. Stacker will break or machine will tilt over. The maximum load for the stacker tray is 15 kg.
- Do not open covers while the machine is running.
- Do not move machine while the machine is running.
- Be cautious when the top lid is open. Prior to accessing the interior, always ensure that the cutter is turned off and disconnected from power supply.
- This equipment is not suitable for use in locations where children are likely to be present.

- Do not use emergency stop button for regular operation of the Cutter. The emergency stop button is designed for immediate stop solely for emergency situations to ensure the safety of all individuals involved. To reset the emergency stop button rotate it clockwise direction and pull it back upwards to its original position. The emergency stop button should only be reset after addressing and resolving the emergency condition that triggered its activation.

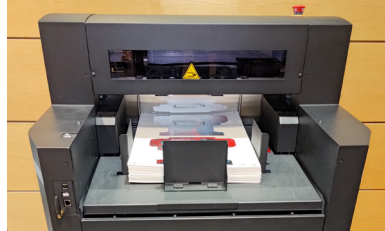
Emergency stop button



Safety measures, continued

Warning: PINCH / CRUSHING HAZARD!

There are “Pinch Hazard” stickers on the SC6500 to remind the user to pay extra caution when the machine is running:



- Do not ever put your hand under vacuum belt area while machine main switch is ON. Vacuum feed belt goes up and down. Hand or fingers can be crushed.
- Paper load table goes up and down. Do not load while machine is running.



- Keep fingers and hands away from the moving carriage. The carriage change direction quick and have lot of force.
- Keep the cover closed while running.
- Keep hair away from the outfeed area. Hair entanglement hazard.

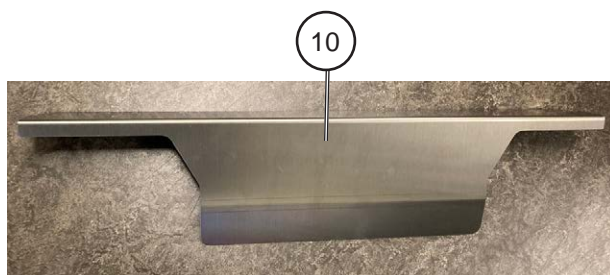


- Keep fingers and hands away from moving parts underneath in top of the storage area.

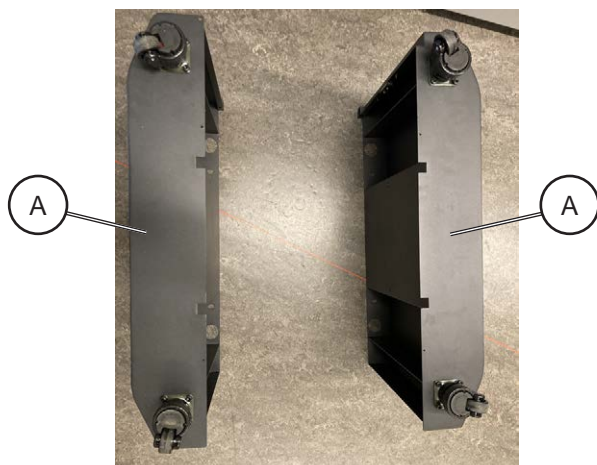
1.4 ColorCut Pro Installation

1.4.1 Accessory check

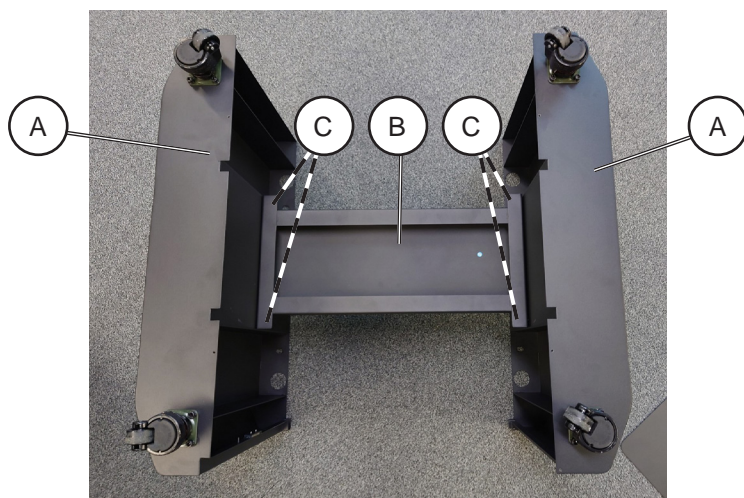
Item	Qty	Description
1	1	Left Side Frame
2	1	Front Filler Strip
3	1	Right Side Frame
4	1	Central Support Brace
5	1	Internal Shelf
6	1	Front Door
7	1	Base
8	1	Accessory box (incl. USB Cable, Ethernet Cable, Power Cord, Calibration Pen Tools, Blade Holder, Creasing Tool & Blades)
9	1	Stand Assembly Box (incl. Allen (hex) key, Spanner, Allen Bolts (hex), Washers, nuts, screws)
10	1	Tag Reduction Plate



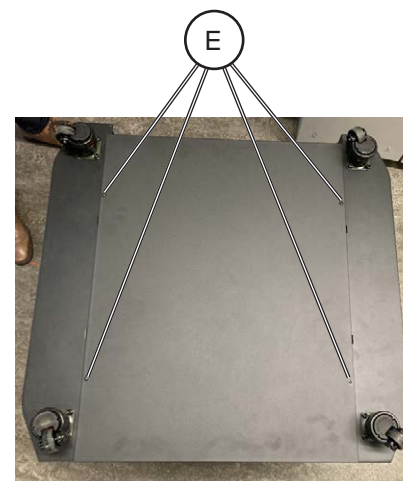
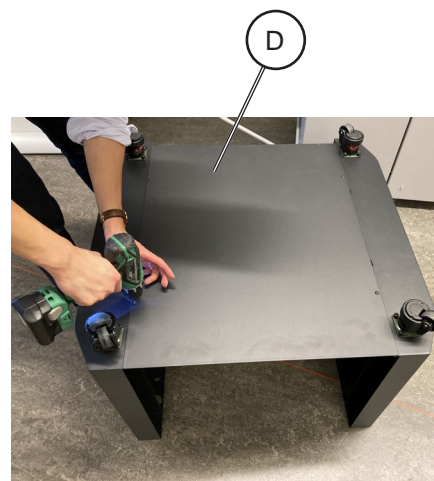
1.4.2 Cutter preparation



1. Take the side frame pieces [A] and place them with the casters upwards.



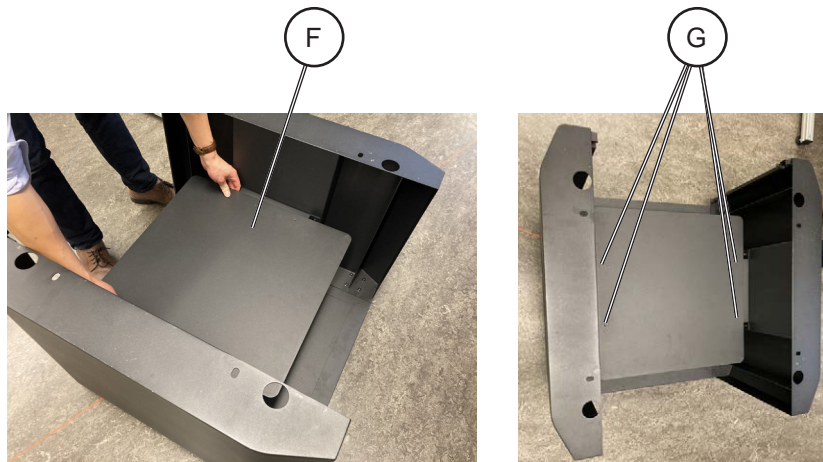
2. Place the Central Support Brace [B] in between the side frame pieces [A]. Using the Allen screws (4x) and washers (4x) hand tighten the support brace to the side frames [C], then using allen wrench fully tighten all fixings.



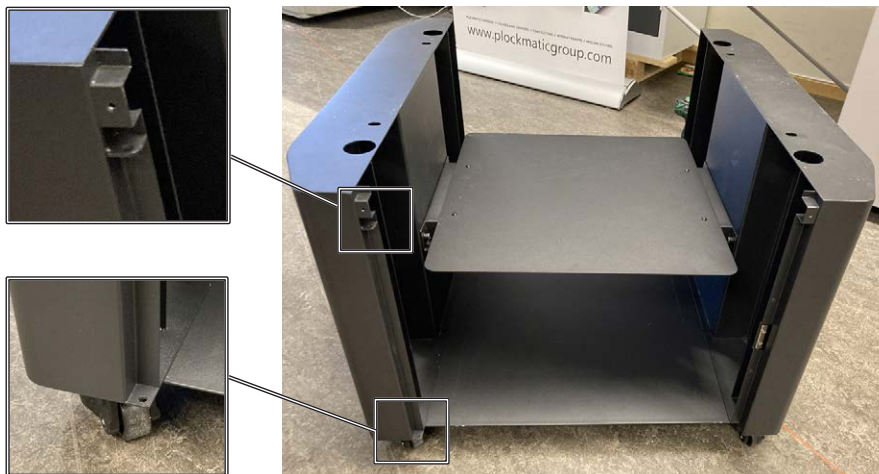
3. Place the base panel [D] onto the bottom of the stand, align all fixing holes and screw it loosely in place using remaining type screws (4x) [E], then fully tighten all screws.



4. Turn the assembly over with casters on the ground.



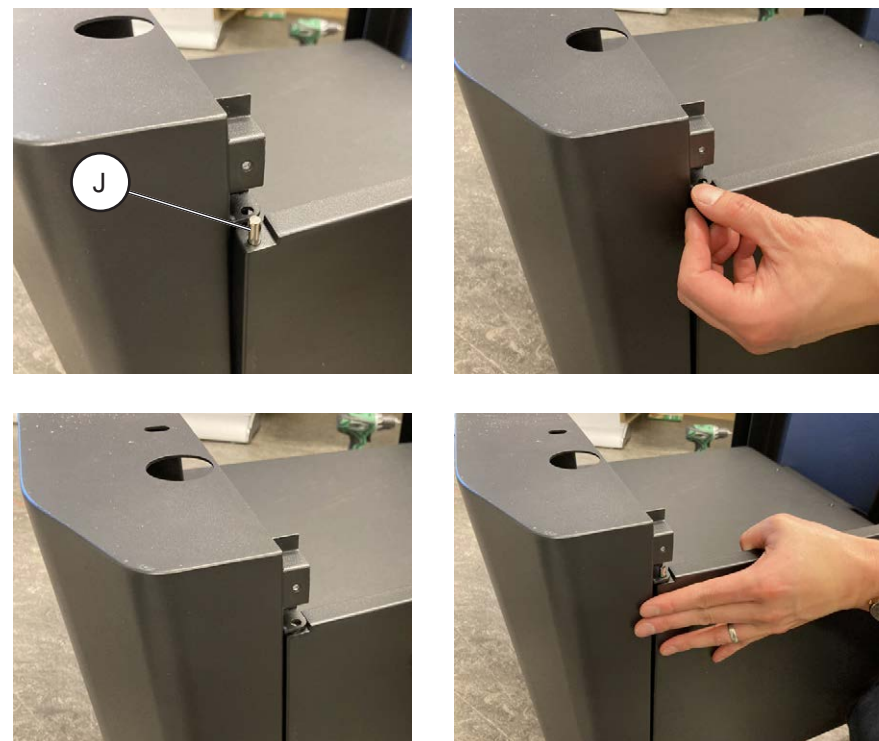
5. Place the Internal Shelf [F] on the Central Support Brace, align all fixing holes and screw it loosely in place with supplied screws (4x) [G], then fully tighten all four screws.



6. On the left side of the unit locate two holes for door piece. Locate bottom pin and top sprung pin on the door piece.



7. Place the bottom pin [H] of the door into the bottom slot [I].



8. Push down the sprung loaded pin [J] on the door, slide the hinge into the frame. Once positioned, gently release so the pin locates in the hole.

Caution:

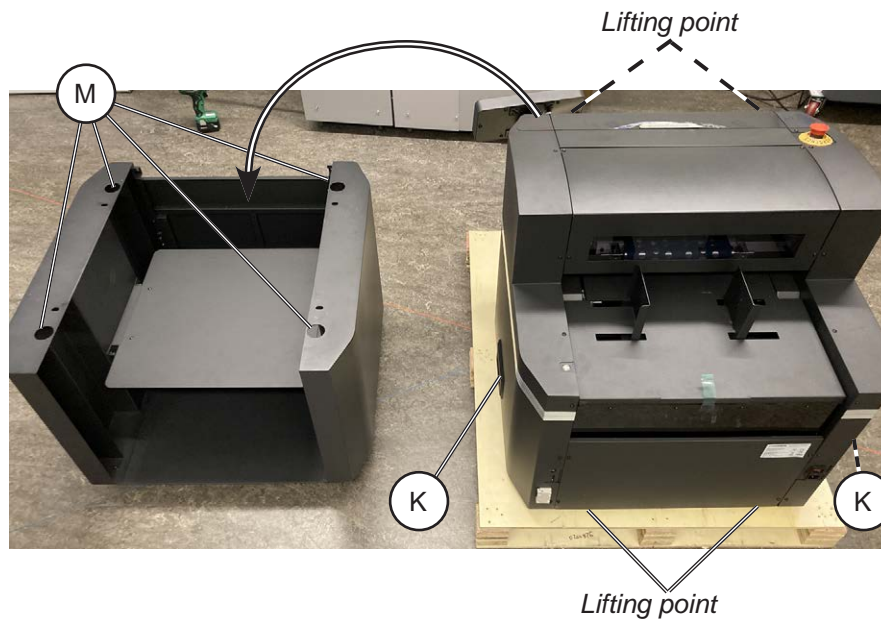
It is recommended that minimum of four people carry out this task.

Warning:

Do not lift the unit from the bottom but use the handles [K] on the sides!

Pinch risk:

Keep fingers away from base of cutter when being lowered!



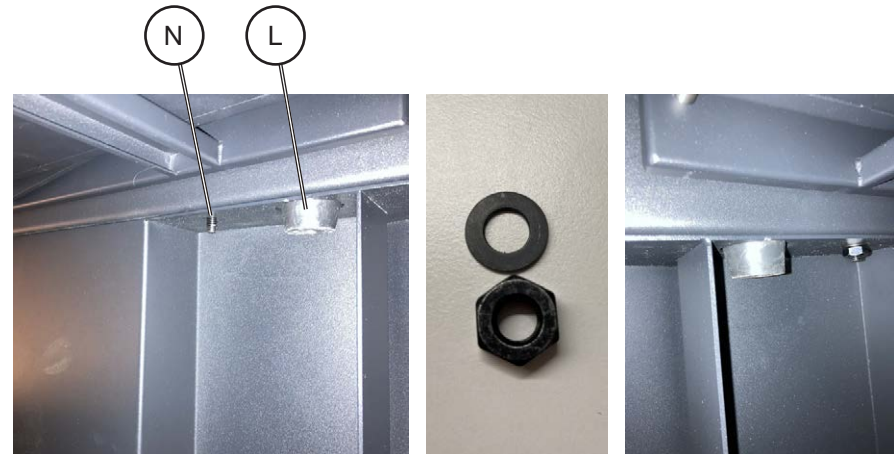
9. Remove the front drawer for easier access for lifting the unit.
10. The main unit has rubber feet (4x) [L] that match with holes (4x) [M] on the support unit; these serve as guides to ensure that the main unit is properly placed on top. Carefully lift the main unit by handles [K] with one person on each side and one at front and back and place it onto the support unit.



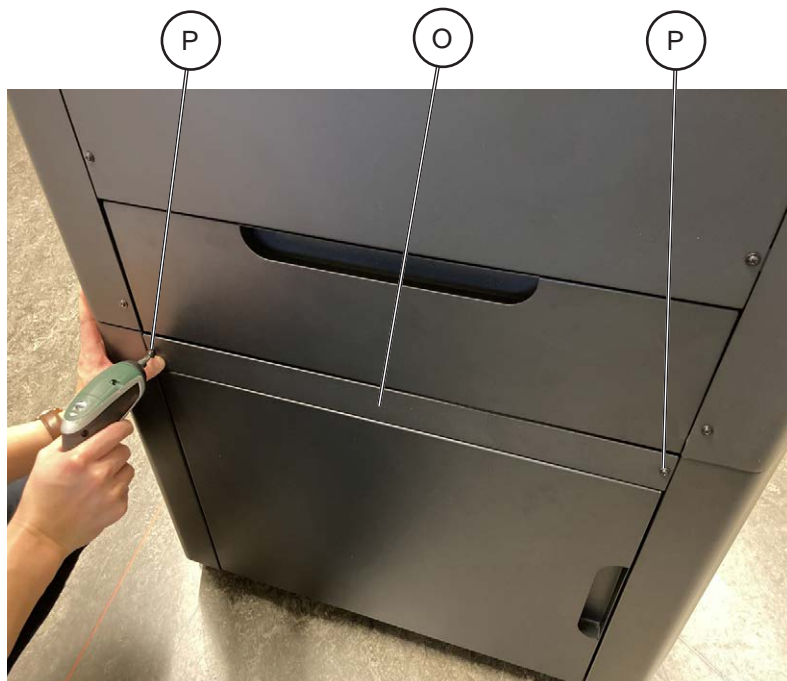
11. Once the top half of the cutter is on the stand, secure the top to the stand. To do so open the door and reach inside the machine.

Caution:**Avoid topple risk!**

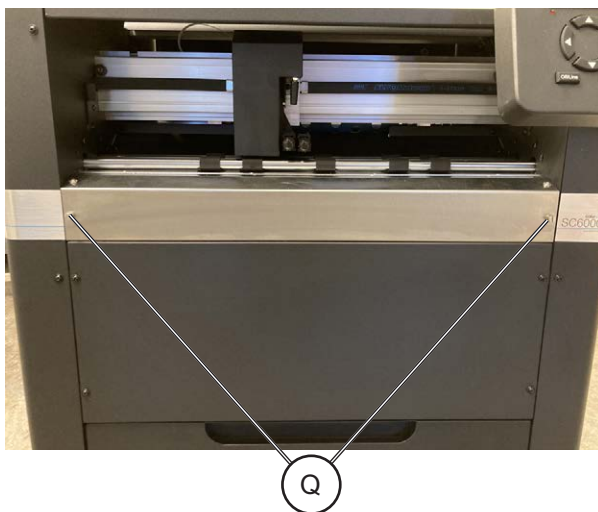
Cutter must be bolted securely to the cabinet stand.



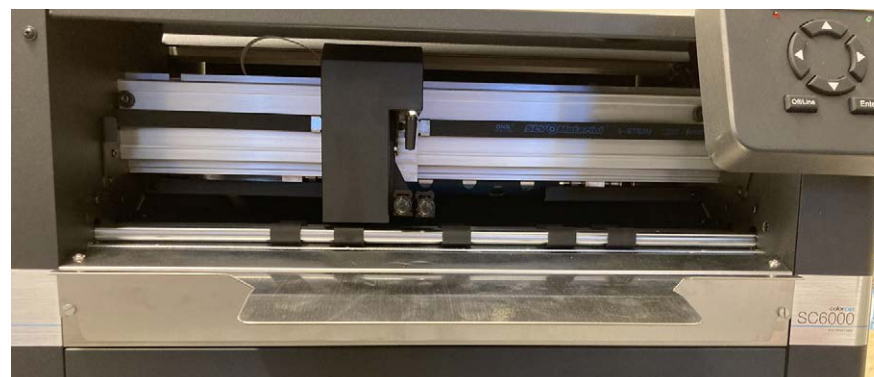
12. Locate screws (4x) [N] on the sides and install washers (4x) and nuts (4x).



13. Retrieve Front Filler Strip [O] and install it above the door with screws (2x) [P].



14. On the outfeed side locate screws (2x) [Q].



15. Retrieve Tag Reduction Plate [R] from accessory box and slide it on to the screws (2x) [Q].

Note: Tag Reduction Plate is a removable extension that provides more support to the sheet being moved back and forth. This means the sheet stays flatter and sections of the cutout are less likely to pop out of the sheet. This allows for less tabs or in some cases, no tabs will be required at all, hence increasing productivity of the machine. See operator manual for more details.

1.4.3 Fuse replacement (if required)

Warning:

Make sure the power cord is unplugged before replacing the fuse!

The SC6500 is shipped with a F 6.3 A fuse installed.

This fuse works in 100-240 Vac environments.



Procedure:



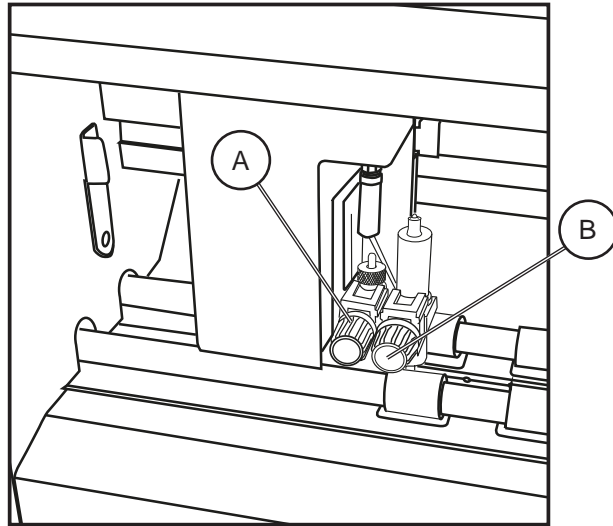
1. Open the inlet filter fuse holder cover.



2. Replace the fuses [A] (2x).

1.4.4 Tool Carriage and Tools installation

The tool carriage is mounted on a bar, located at the front of your SC6500 cutter that spans across the cutting area. The Tool carriage contains two tool holders, each independently controllable. Each Tool holder enables you to install or switch easily and efficiently between a range of tools.



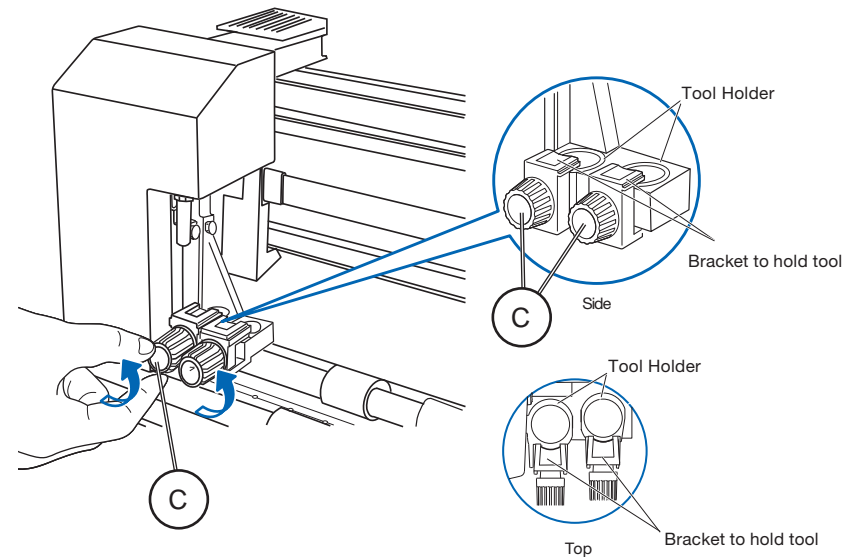
These tools may include a blade holder, or multiple blade holders if required, a creasing tool and a pen for calibration.

Each Tool holder has a different diameter. Position 1's tools do not fit in Position 2. The supplied Blade Holder is designed to fit in Tool position 1. You will require a different (optional) Blade Holder for Tool Position 2 to mount two cutting blades simultaneously.

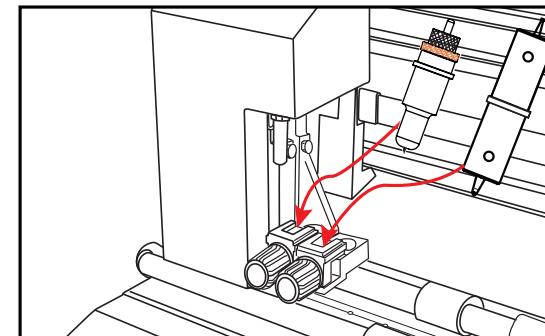
Conversely the creasing tool supplied is designed to fit specifically in Tool Position 2.

Therefore; Tool Holder Position 1 [A] is typically the primary position for the blade holder and cutting blade. Tool Holder Position 2 [B] is typically used with the Creasing Tool.

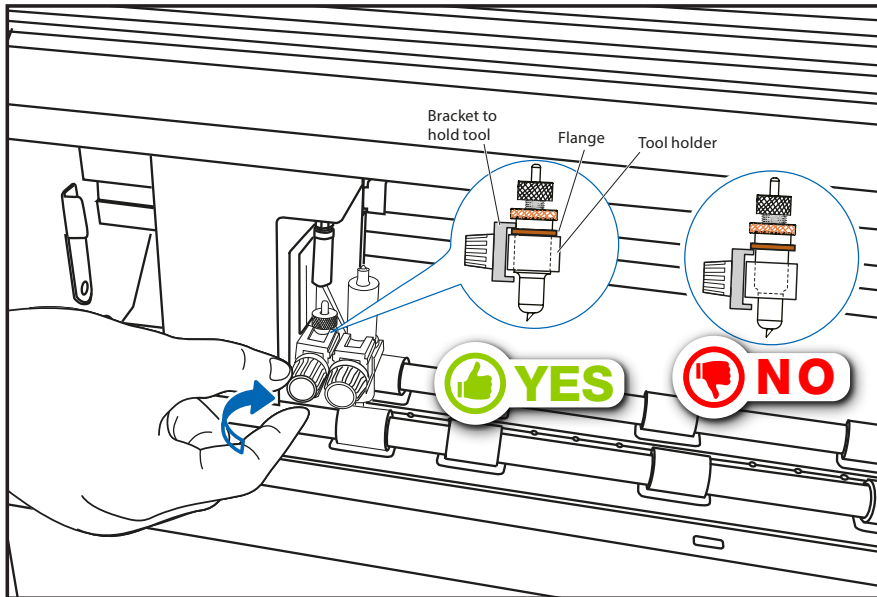
Tools installation



1. To install a tool into your ColorCut SC6500 loosen the tool holder's thumb screw [C] sufficiently to enable a blade holder or calibration pen to be inserted in Tool position 1 up to its flange (Or Creasing Tool in position 2).



2. Push the Blade Holder or Calibration Pen all the way into the tool holder position 1 until the tools' flange completely touches the upper part of the holder. Push the creasing tool all the way into tool position 2, until the creasing tool flange complete touches the upper part of the tool holder.



3. Make sure that the tool bracket is engaged on top of the tool's flange, and then tighten the screw.
It is important, the Bracket to hold the Tool, is over the Flange as this will hold the tool down. (If the Flange is above the bracket that holds the tool, the tool height will be incorrect and the tool may gradually move up during operation).
4. After fitting the Blade Tool in position 1, repeat the same process for the Creasing Tool in Position 2.

Intentionally blank

1.5 Software installation

The ColorCut Pro software is a professional cutting package that creates cutting files directly from Illustrator or CorelDRAW using the vector lines you have drawn, ColorCut Pro communicates directly with your cutter and ultimately cuts your jobs.

There are two installation versions of ColorCut Pro, a plug-in (which requires Adobe Illustrator® (MAC or PC) or CorelDRAW® (PC)) which creates the cutting jobs directly from your vector lines and can either send your jobs directly to the cutter (PC only) or create a cut file that can be retrieved at any time using a QR code (automatically added to the sheet) (MAC & PC clients) then users can cut a different computer (acting as a production server).

ColorCut Pro Software for your ColorCut Cutter is supplied on the included CD, however it may also be downloaded from Plockmatic Customer Center.

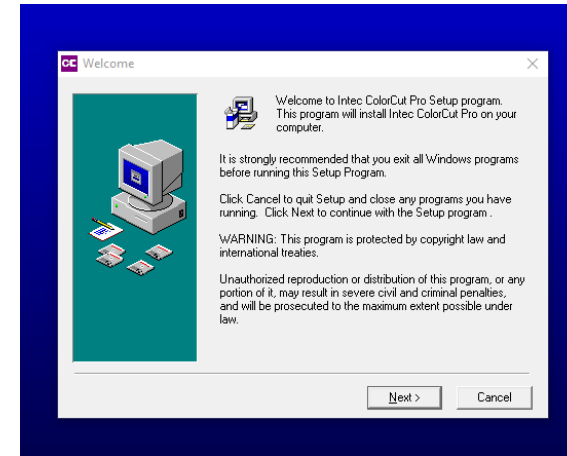
Note: ColorCut Pro requires a Minimum display resolution: 960×830.

1.5.1 ColorCut Pro Installation

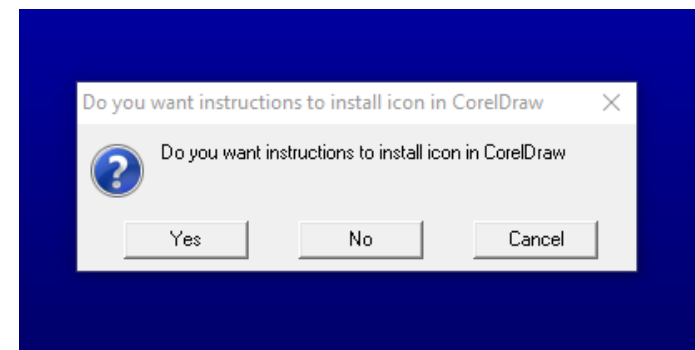
1. Run the installation program: SetupColorCutPro.exe

The setup program requires various confirmations for the installation of the program.

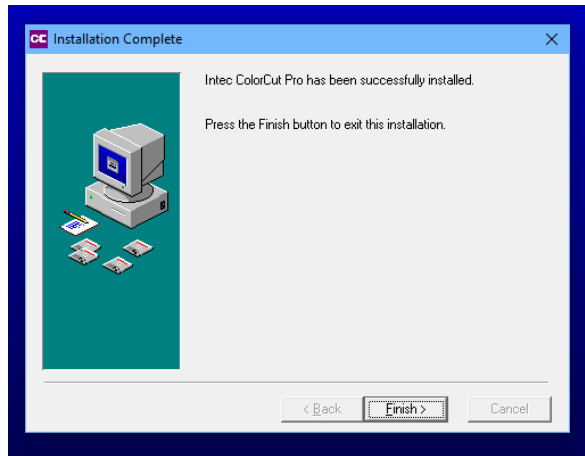
On some computers you could be asked the system administrator's password to execute the installation, in the case you do not have this information; contact the technician who administrates your system.



2. To start the installation of the ColorCut Pro software, click the [Next>] button.
3. By default the ColorCut Pro software will automatically install into Adobe Illustrator if it is installed on your computer.



4. If you have Adobe Illustrator, then the installation has completed and click [No] on the dialogue box asking you if you wish to review the CorelDRAW installation instructions.
5. If you have CorelDRAW, skip to the next page.



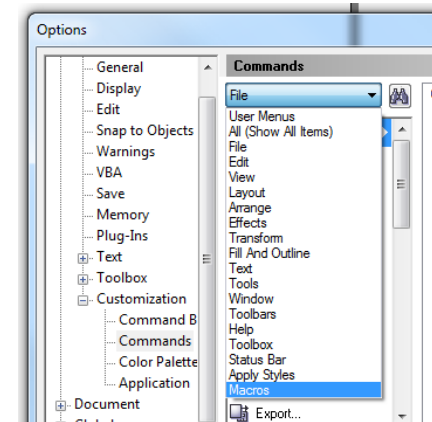
6. If you have Adobe Illustrator, then the installation has finished; go to Section 1.5.2.

ColorCut Pro installation for CorelDraw

Skip this section if you have installed ColorCut Pro for Adobe Illustrator.

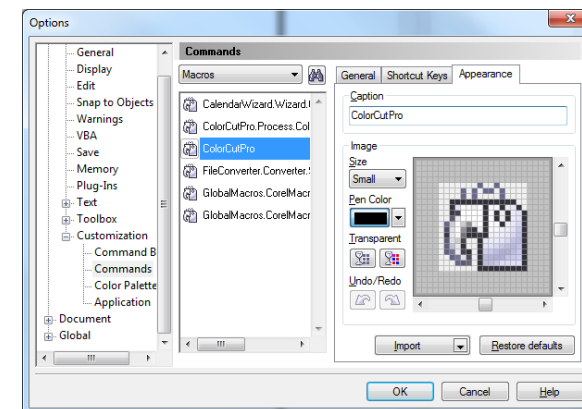
As part of the ColorCut Pro installation, the plug-in's to CorelDRAW are installed, however you need to add a shortcut into CorelDRAW.

1. Open CorelDRAW then click on the Tools menu, and select Options.
2. From the Options dialogue box, select: Customization and under this, click Commands
3. In the panel on the right, select macros from the drop down menu.
4. Select either:
 - colorcutpro.process.
 - colorcutproall
 - colorcutpro.process.colorcutpro

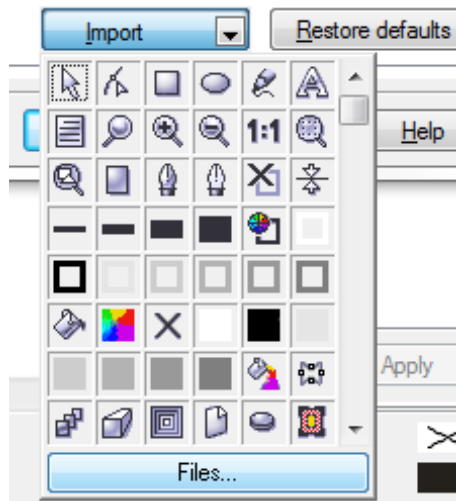


The 'colorcutpro.process.colorcutproall' version exports the entire drawing however the desired way to work is with layers

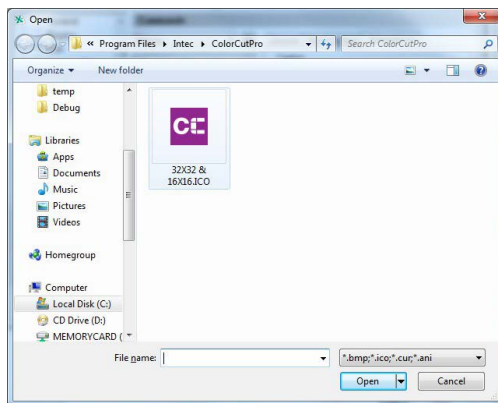
The 'colorcutpro.process.colorcutpro' version only exports the currently selected layer. Unless you want to export the entire drawing. If you are unsure, we recommend using the 'colorcutpro.process.colorcutpro' version.



5. On the appearance tab menu (Under caption), change the name to ColorCutPro. This is the name that will appear on the menu.



6. On Appearance tab, click [Import].
7. From the [Import] drop down, select [Files] at the bottom.

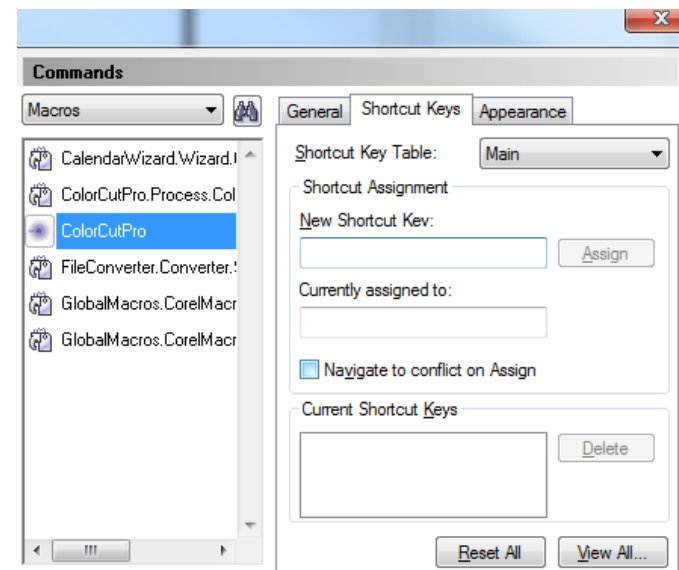


8. Navigate to:

For 32bit users of CorelDRAW	C:\Program Files (x86)\PlockMatic Group\ColorCutPro 5
For 64bit users of CorelDRAW	C:\Program Files\PlockMatic Group\ColorCutPro

and select the icon as shown.

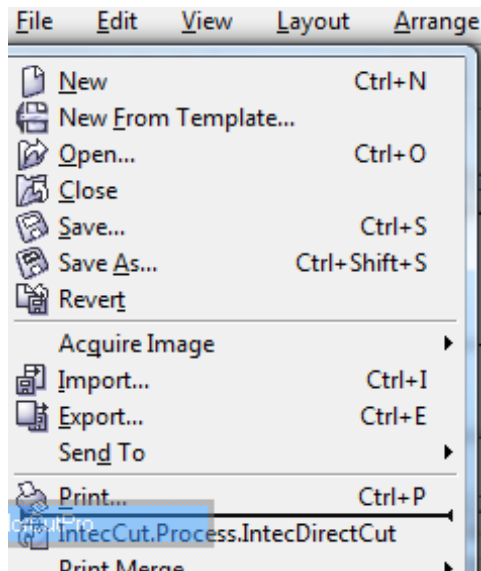
The file path may alter.



9. Open Shortcut Keys Tab. Place the mouse cursor at New Shortcut Key input field and click then hold down the Alt key and type C.



10. To add ColorCutPro icon to your tool bar click on the ColorCutPro Command from the Macro list, press and hold the left mouse button and drag the icon next to the printer icon on the tool bar and release.



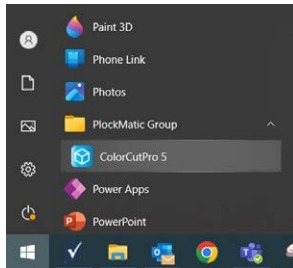
11. To add the ColorCut Pro plug-in to your File Menu next to the Print item, press and hold on the Command name again at point, Click and hold the left mouse button and drag the icon until you position the mouse over File Menu, which will pop open the file drop-down menu.
12. Then move the mouse to next to the print button without releasing it and let go of the mouse button. You should now see the ColorCut Pro menu option appear.

Installation of CorelDRAW is now complete, continue on to the next section.

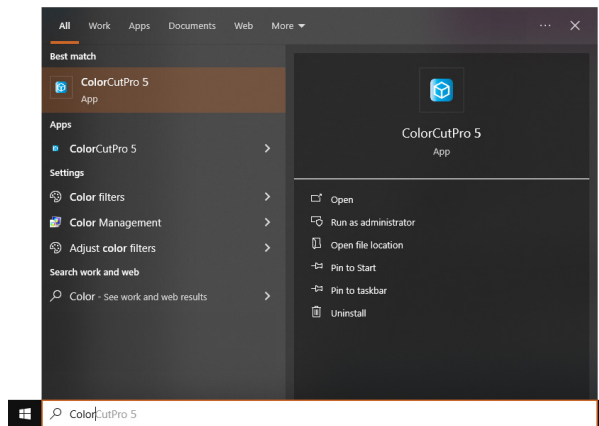
Intentionally blank

1.5.2 ColorCut Pro Activation

The first time you open the ColorCut Pro application, you will need to activate it before you can use it.

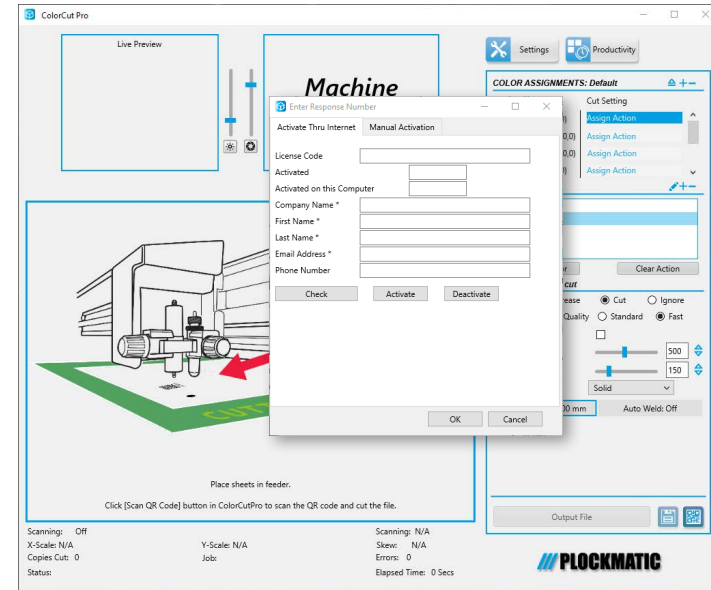


1. To launch ColorCut Pro, use the Windows Start menu, or press the Windows key on keyboard and select the ColorCut Pro icon from the PlockMatic Group folder (the folder name may alter).



2. Alternatively, type the first few letters of ColorCut Pro in the search bar, to find the ColorCut Pro application.
3. You can pin the ColorCut Pro application to the Start bar, or quick launch task bar if required.

Note: You can also launch from inside Illustrator or CorelDraw, however this requires some vector lines on the page before you do so, thus for the initial launch, please use one of these methods.



4. Upon first launch, the Activation screen will appear.
5. The ColorCut Pro software can be activated automatically on-line. Enter the Licence Code from the card supplied with ColorCut Pro software and fill out your details. Click [Activate].
6. If your computer does not have Internet access, you can manually activate the software by clicking the [Manual Activation tab] in the window.
7. When manually activating the software, a challenge number is displayed, you will need to either email this number to Support, or call one of the activation numbers as shown in the dialogue box. The activation team will email back the response code, or provide it over the telephone. Enter the response code to active your software.

1.6 Connecting and powering on the cutter

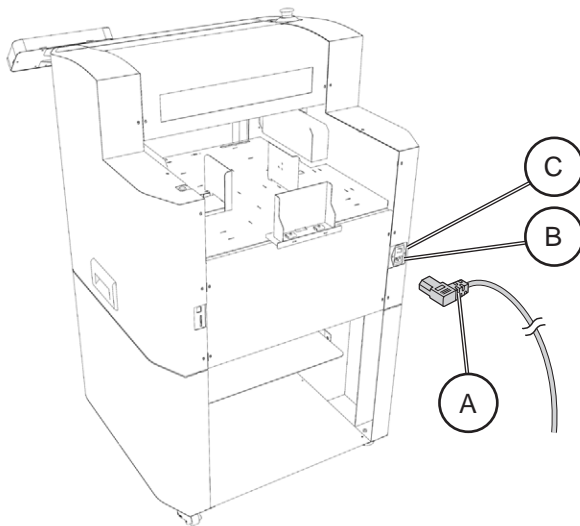
1.6.1 Turning on the cutter

Warning:

Before connecting the machines to the power supply, make sure that each cover on each module has been reinstalled and that any part of the machine that was disassembled during installation was put back in place. Do not connect the machines to the power supply if covers are off or if any module is (even partially) disassembled. Make sure you use a proper grounded plug in the wall outlet. Never plug in the module to a non-grounded plug.

Warning:

Before turning on the machines, make sure that each cover on each module has been replaced and that any part of the machine that was disassembled during installation was put back in place. Do not turn the machines on if covers are off or if any module is (even partially) disassembled.



1. Securely plug the power cord [A] into the mains socket [B] on the rear panel and connect to an electrical outlet of the specified voltage.
2. Turn on the power using the mains switch [C].
3. After the Warning screen appears on the LCD panel, press the Enter key. This action will prompt the cutter head to automatically return to its Home position. Once it reaches the Home position, the cutter will be in an Online state, fully prepared and ready for use.

1.6.2 Connecting to computer

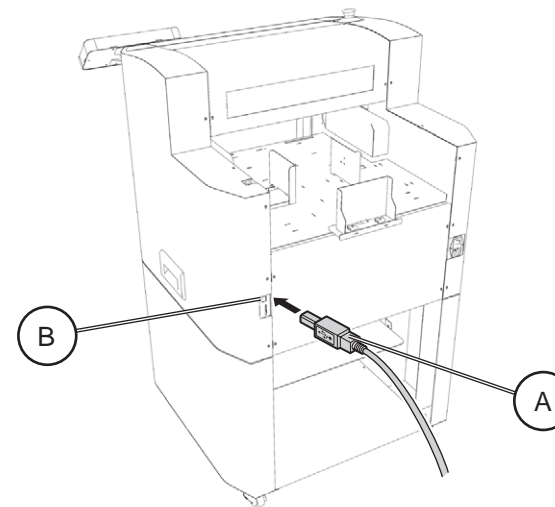
The ColorCut Pro software includes the USB and Ethernet drivers built into the software. There is no need to install any addition drivers.

Note: Operation can not be guaranteed in the following circumstances:

- 1) When connection is made through a USB hub or an add-on USB board.
- 2) When you are using a custom-built computer that has been modified.

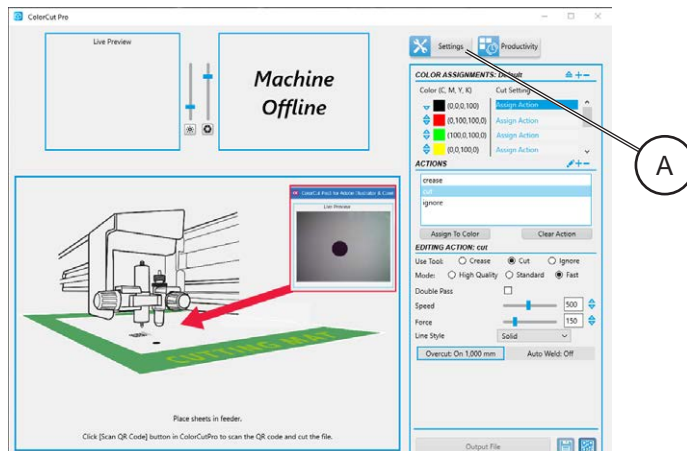
For optimal results, please ensure the following:

- Do not connect or disconnect the USB/Ethernet cable while you are installing the Color Cut Pro software.
- Do not connect or disconnect the USB/Ethernet cable while starting up the computer.
- Do not connect or disconnect the USB/Ethernet cable while switching on the cutter.
- Do not disconnect the USB/Ethernet cable within a 5 second period of connecting it. (It does not always recognise the fact it was subsequently disconnected and won't reconnect again until you power-cycle both devices)
- Do not disconnect or connect the USB/Ethernet cable while you are cutting a job, or while data is being transferred.

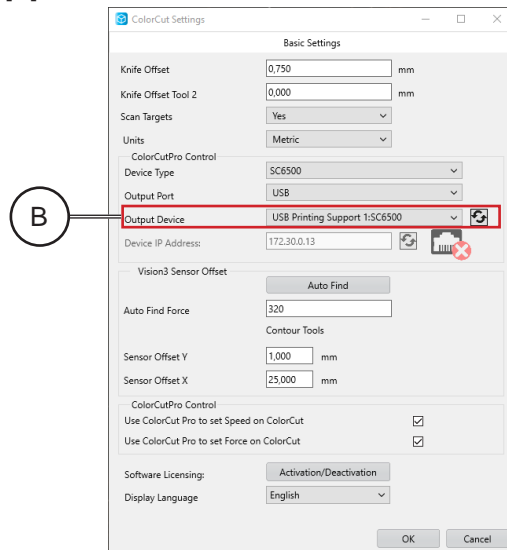


1. Plug the USB cable [A] into the USB socket [B] on the rear panel and connect to your Windows PC; or plug the Ethernet cable into the socket on the rear panel and connect to your Ethernet socket.

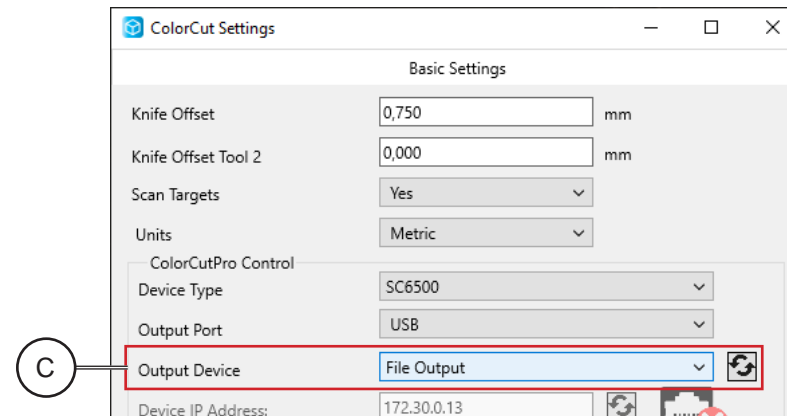
1.6.3 USB or Ethernet Connection confirmation



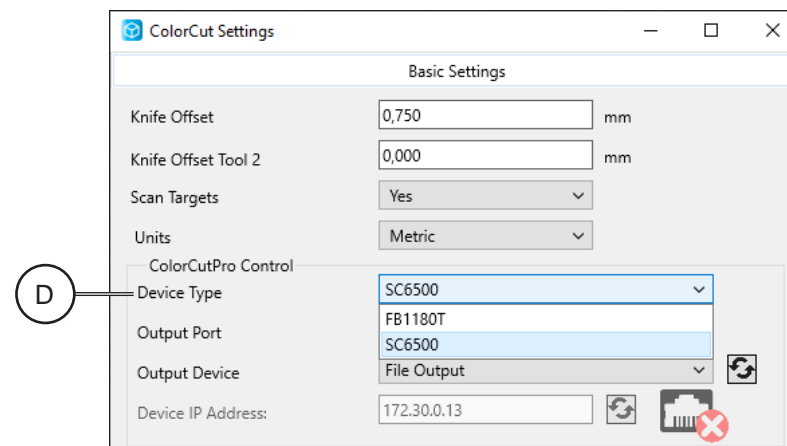
1. Launch ColorCut Pro.
2. When the ColorCut Pro application launches, click on the Settings button [A].



3. The ColorCut Pro Settings dialogue box will appear.
4. If the connection to your cutter is successful then under the Output Device option you will see the term 'USB Printing Support: x', where 'x' is your cutter type, or 'Ethernet Direct connect'[B].



5. If the Output Device shows, [File Output] then the connection has not been successful [C]. Switch off the cutter and wait 10 sec. Unplug the USB cable from your computer, and try a different port, then switch back on the ColorCut engine. Wait until the Home screen is displayed on the SC6500 LCD panel. Repeat steps 1 to 4.



6. After confirming successful connection, select Device Type SC6500 from drop-down menu [D].
7. Click [OK] to confirm and close the settings dialogue box.

1.7 Checking the installation

1.7.1 Test Cut

The Test Cut function allows you to check your blade depth/force settings on your ColorCut SC6500 cutter and perform calibration of Align Tool2 to Tool1.

Warning:

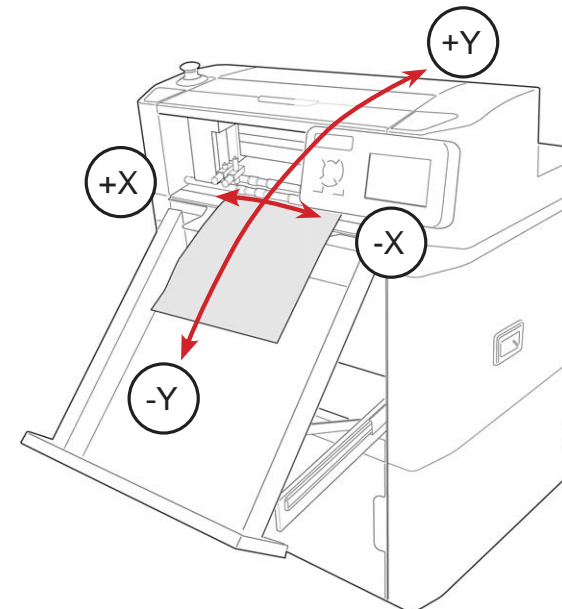
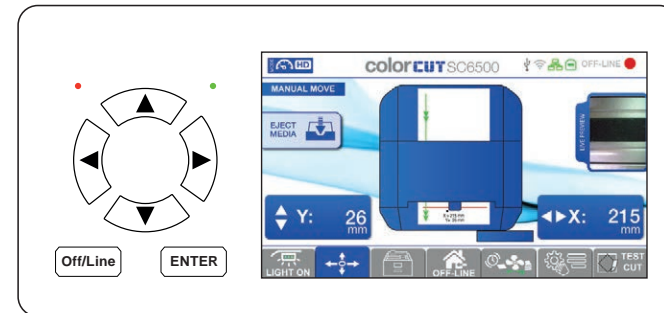
Do not press [TEST CUT] until you have loaded a sheet of media and moved the tool carriage into a clear area on the media, away from the far right side of the cutter (see following steps). The Test Cut function will draw a Diagonal (Diamond shape) using Tool 2 and a Square using Tool 1, at the tools' current location. If you press [TEST CUT] without moving the Tool Carriage away from right side, then the display will show an error message (due to the fact the Test Cut function would require the tool carriage move right into the side of the cutter to perform a Test cut and this is not permitted). If you see this error message press [Enter] on the control panel and move the carriage away from the right side. Please follow the steps below to perform a Test Cut.

Note: The Test screen is very useful for checking your blade depth and the pressure/force used during cutting, prior to starting a job. After the Blade tool has been loaded and you have manually adjusted the blade depth to a level you believe is correct. Load a sheet of your media, and perform a test cut, following the instructions below. Then adjust the blade and pressure accordingly. Checking and adjusting the settings for your specific media prior to a production saves time and eliminates waste.

Performing a Test Cut to check depth/force:



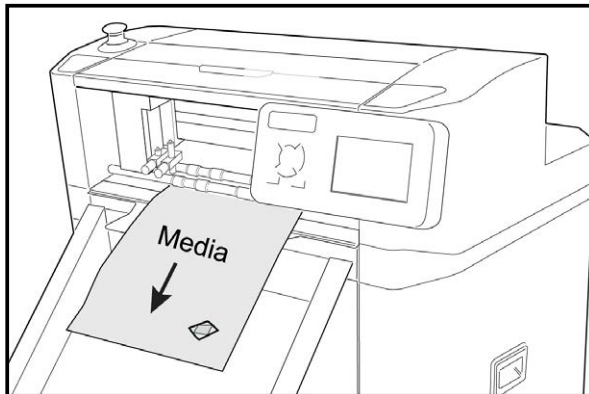
1. Place a blank sheet of paper in the feeder.
2. On the main screen press [Feed Media] button, that will feed the media to the rollers and move the carriage over the sheet.



3. Make sure the carriage is positioned in clear area with approximately 25 mm of space (1") available in either direction around the Blade Tool's position.
4. If there is not enough clear space then, press the [MOVE] tab button on the display:
 - Press the Up/Down arrow buttons on the key pad to move the media feed rollers (Which will move media backwards (+Y) / forwards (-Y)).
 - Press the Left/Right arrow buttons on the key pad to move the tool carriage across the media in +X or -X directions.



5. Press [TEST CUT] button. The SC6500 will now draw a Diamond Shape using Tool2 (The creasing tool) and cut a Square around the Diamond shape using Tool1 (The blade).



6. The SC6500 will then eject the media forwards so you can check the cut quality/depth and pressure. If you are cutting Through the media (Die-Cutting), then please remember the least amount of blade possible will provide the best result.

Note: The minimum level of exposed blade will provide the best quality on sharp inverted turns and extend your cutting strip life. Too much Blade, will result in the Blade cutting through your media and cutting into the cutting strip. This will reduce your blade life, create poor quality cutting on sharp inverted turns and damage the cutting strip reducing the cutting strip life.

7. Check the result of the test cut on the ejected sheet, if the cut depth is not sufficient, (or it is too excessive) then select the appropriate Tool (i.e. Tool1) and adjust the Force using the Left arrow and Right arrow keys on the panel until you can cut your material correctly.
8. If you cut through your Card media with a pressure <220 g then it is likely you have too much blade exposed. Stop, remove the blade holder and reduce the blade amount exposed and then test again. If you cannot cut through normal card with a force >450 g, then it is likely you may not have enough blade exposed.

Note: The maximum 750 g is typically only used for creasing, although cutting pressures higher than 450 g may be used for metallic materials, PET and vinyl's.

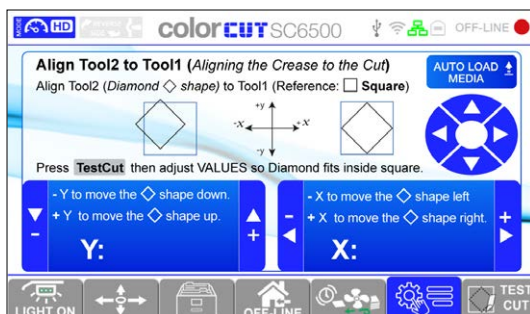
9. When new settings are applied, repeat the test cut until the desired cut is achieved. There is no need to move the carriage while performing a new test cut since the carriage will shift to the left side each time a new test cut is performed.

Test cut using both pen tools to calibrate Tool2 to Tool1:

Note: The machine comes from the factory with TS1 and TS2 already calibrated. However, it is important to know how to do this and confirm the calibration.

Note: Prior Tool2 to Tool1 calibration the Calibration of the Vision3 sensor offset to the Cutting Blade (Section 1.7.2) must be done.

1. Retrieve calibration pen tools from accessory kit and instal in to Tool holder 1 and Tool holder 2;
2. Repeat steps 1 to 4 from 'Performing a Test Cut to check depth/force';
3. Press [Test Cut]. The SC6500 will draw a Diamond Shape using Tool2 and a Square around the Diamond shape using Tool1;
4. The SC6500 will then eject the media forwards so you can check the alignment of the drawn shapes. Evaluate if the Diamond is in the middle of the square;



5. If the shapes does not align, on LCD panel enter Settings and Options menu and open 'Align Too2 to Tool1' calibration screen.
6. Using arrow buttons on key pad adjust the coordinates of the Diamond shape:
 - Press the Up/Down arrow buttons on the key pad to move the diamond shape up (+Y) or down (-Y).
 - Press the Left/Right arrow buttons on the key pad to move the diamond shape right (+X) or left (-X).
7. When new settings are applied, repeat the test cut until the desired alignment is achieved (Diamond fits inside the square).

1.7.2 Calibration of the Vision3 sensor offset to the Cutting Blade

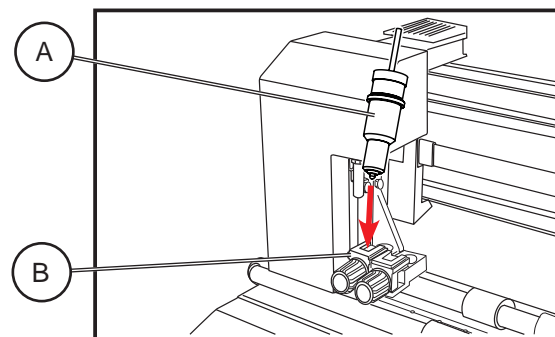
The ColorCut SC6500 engine includes a Vision3 sensor which is an 8th Generation ARMS system (Automatic Registration Mark Sensor). The Vision3 sensor uses a CCD camera to automatically detect registration marks, the position of the registration marks on your sheet allows ColorCut Pro to compensate for any scale or skew errors and adapt cutting lines enabling highly accurate cutting to elements printed on the media.

The Vision3 sensor is mounted offset to the cutting blade holder, so your ColorCut Pro application must be calibrated to compensate for the offset (distance) from the Sensor to the cutting blade.

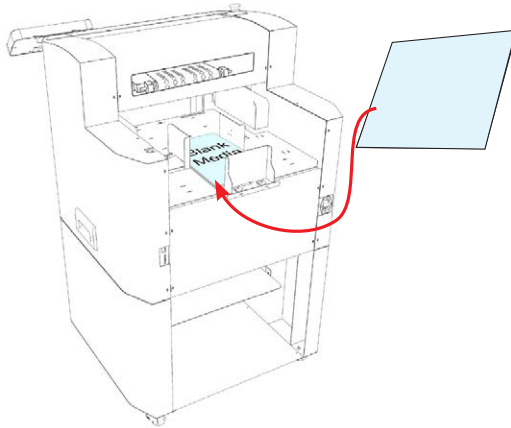
Note: The sensor offset value is stored within the software application, so if you plan to use multiple machines, you must set the sensor offset on each computer therefore, if you are using ColorCut Pro Job server, on a different computer as a production machine, you will need to set it on that machine also in order to cut accurately.

Calibrating the Vision3 camera offset is done by the software automatically. (It can be done manually if you want to).

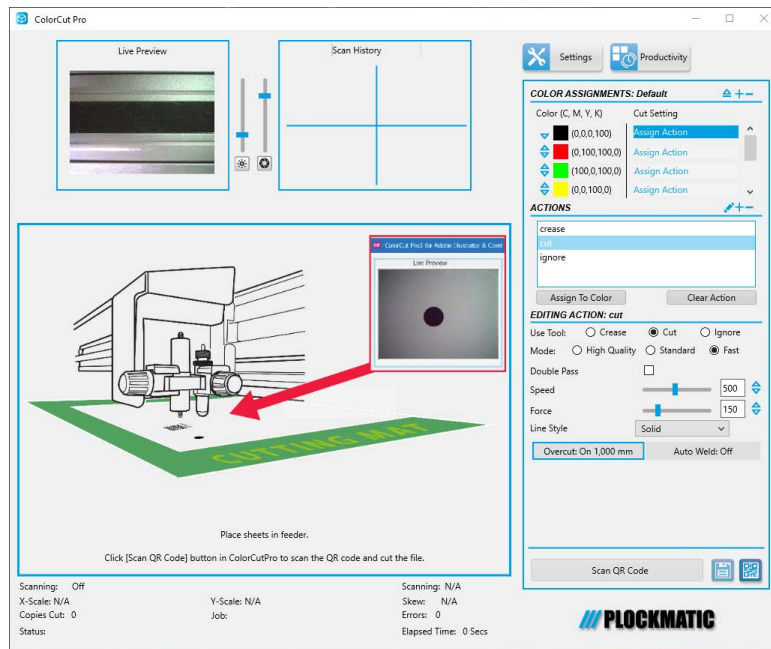
To use the AutoFind feature to set the Vision3 sensor offset, use the Pen Calibration Tool [A]. The pen tool is used to draw a circle, the centre of which is used to define to point of the cutter blade, then the Vision3 ARMS sensor reads the location of the circle and the software calculates the offset automatically.



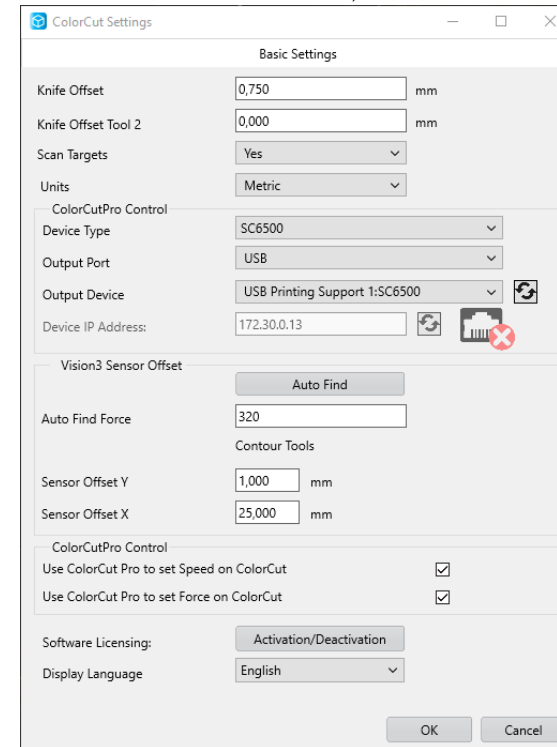
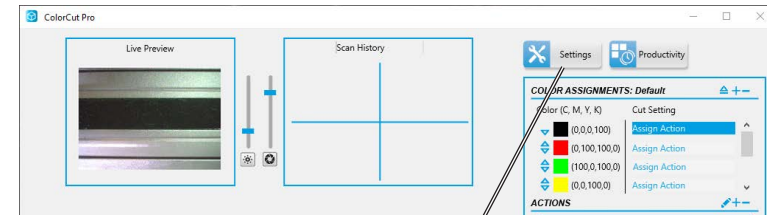
1. Place the Calibration Pen Tool [A]. In to Tool Holder 1 [B]. (Normally the position for the Blade Holder).



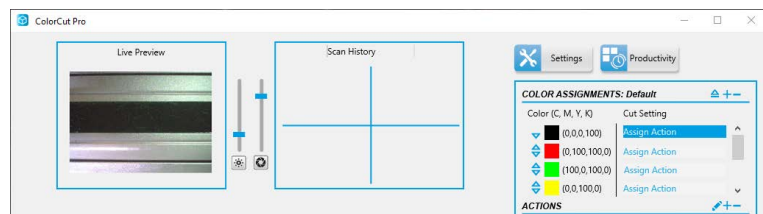
2. Load blank paper sheet(s) into the media tray. Adjust the self centering side guides to the edges of the media. Ensure they are not too tight against the side of the media.
3. Make sure the Cutter is connected to computer via USB or Ethernet (Section 1.6.2)



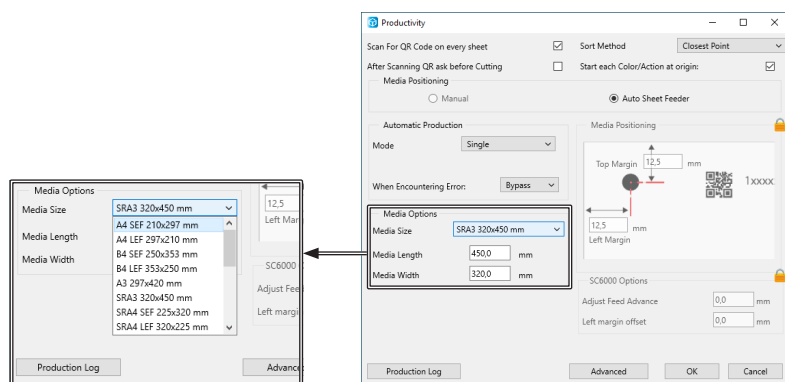
4. Launch the ColorCut Pro application from your computer.



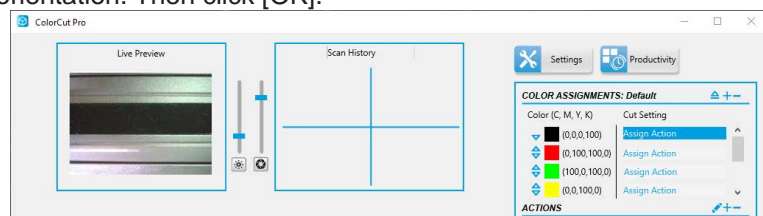
Note: If the SC6500 is connected in the Settings (Section 1.6.3) you should see a preview of the Vison3's CCD camera in the 'Live Preview' window.



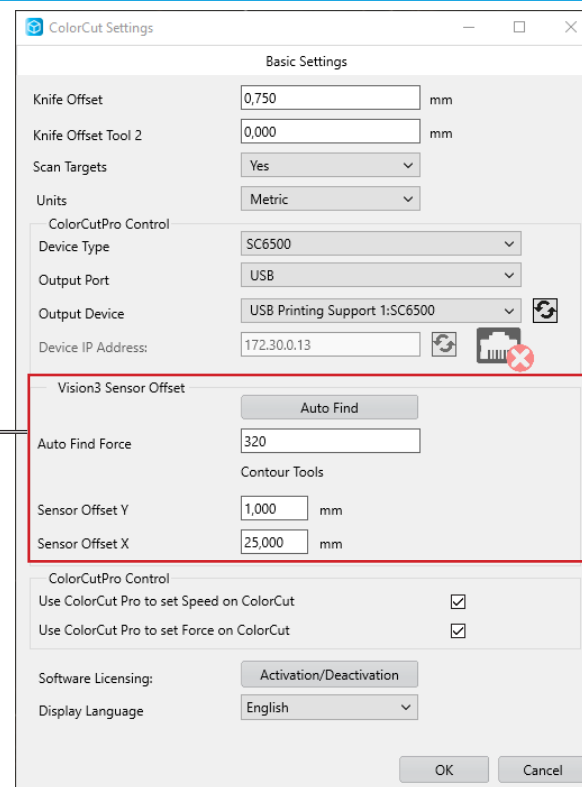
5. At the top right of the ColorCut Pro window, click on the [Productivity] button to display the productivity window.



6. From the Media Options click on the media size to match the paper size you placed in the feeder.
7. If selecting A4 or US Letter, ensure you set SEF (Short Edge Feed) orientation. Then click [OK].



8. In the main ColorCut Pro application screen, click on the [Settings] button.



9. The ColorCut Settings dialogue box will appear. Here you can manually enter the Sensor Offset [C] or automatically set it by clicking the [Auto Find] button. (The force used, can be manually set in Auto Find Force field, by default for you. If value is set >200 <320 g it doesn't need to be changed)
10. Click the [Auto Find] button, a message will appear asking you to place a sheet of media in the cutter, and click [OK], then the ColorCut SC6500, will load the sheet automatically from the feeder and use the Pen Calibration Tool, to repeatedly draw a spiral pattern to simulate a registration mark. It will then move the Vision3 sensor over to find the mark and automatically enter the values into your Sensor Offset X and Y settings. Once completed you will see a confirmation message.
11. You can now close this window, the calibration for ColorCut Pro is now complete.