



Product Information | Norway

www.plockmaticgroup.com



Digibook 300 XL Pro
PUR Binder

PowerSquare™ 7000
Booklet maker

Autocreaser Pro XL
Creasing machine

DigiFold Pro XL
Multiple creasing and folding

AutoCut Pro
Cutting sheets with templates



FB1190^T
Flatbed cutter with tangential tools

FB9000
Automated digital die cutter

SC7000 Pro^T XL
Digital die cutter

Contents

Page number

BM4000e Series
Booklet making system

AutoCreaser Pro XW
Creasing machine



BM5000 Series
Booklet making system

BM4000e Series	4 - 5
BM5000 Series	6 - 7
PowerSquare™ 7000	8 - 9
VFX Feeder / Barcode reader	10 - 11
Morgana PL104 / BM60 / SFT SquareFold Trimmer	12 - 13
DocuFold Pro	14
Junior DT-A Folder / Junior DT-M Folder	15
AutoCreaser Pro XW / Pro XL	16 - 17
DigiFold Pro XL / Ultra	18 - 19
Creasing and folding styles	20
AutoCut Pro	21
AeroCut X / AeroCut X Pro	22 - 23
Morgana ColourCut SC6500	24
Morgana ColourCut SC7000 Pro ^T / SC7000 Pro ^T XL	25
Morgana ColorCut Flat Bed Range	26 - 27
Morgana ColorCut FB9500 Pro ^T	28 - 29
Morgana RDC Rotary Die Cutter	30
AeroDieCut	31
Comagrav Digi Corsa Flatbed cutters	32 - 33
Evabind Plus / TC 5500S Hotmelt	34
DigiBook 200 / 300XL Pro / 450 PUR Binders	35
Bourg Binder BB3102	36
Komfi Amiga 52 / 76 Laminators	37
Morgana ColorFlare CF2000 / 2500 Pro	38 - 39
DigiCoater Pro 400	40 - 41
EBA Guillotines	42 - 43
Mohr Guillotines	44 - 45
DocuPunch +PLUS / Wob5000	46
Rhin-O-Tuff Wire Binders	47
Reflex Mailing Systems	48
Morgana Band-it P30 & P50	49
Consumables	50
Applications	51
Range Matrix	52



Morgana BM4035e/BM4050e Series

**Landscape format
books with our signature
SquareFold finish.
Now up to 80% faster.**



The NEW BM4000e series produces booklets of a consistently high quality on all types of media.

- The basic configuration with hand feed capability enables users to make booklets in the offline mode.
- Heavy duty staple mechanism designed for durability.*
- Maintenance free thanks to a patented solution that eliminates periodic service intervals.
- Adjustable staple and fold position, The BM4000e series has a patented "set positioning mechanism" that allows the operator to adjust the staple position in the direction of travel, from the intuitive user interface.
- The BM4000e series is designed for demanding environments that handle an average monthly volume of 30,000 booklets per month.
- Operators can now compensate for skew caused when feeding long sheets, this can easily be adjusted in the color user interface on the fly.

The new system architecture enables customers to produce high quality booklets from A6 to A4 landscape, and has all the key processes needed to produce corner and edge staple, folding, spine forming, and full bleed trimming, all combined in one single, easy to use system.

This new booklet maker offers the ability to produce the all new long sheets applications while maintaining the small and compact size.

Unmatched Speed and Productivity

The new BM4035e/BM4050e series has been enhanced with upgraded hardware and optimized machine cycles, resulting in a substantial boost in overall performance and efficiency. This allows the machine to produce over 1,500 A5 booklets* per hour and more than 1,200 booklets* per hour for longer formats like 660 x 320mm sheets. This powerful combination of speed and efficiency ensures faster turnaround times without compromising on the high-quality finish customers expect.

Deliver high quality applications

The BM4000e series uses the latest patented Plockmatic technologies to deliver top quality output. The base unit folds and staples booklets and corner or edge stapled sets up to 140 pages (35 sheets with the BM4035e) or 200 pages (50 sheets with the BM4050e). The set positioning mechanism enables the operator to easily adjust the staple and fold position on the fly.

Morgana BM4035e/BM4050e Series

Finishing Module

The optional finishing module includes a new face trimmer and square folding mechanism in a single unit. The technology is based on the successful trimmer and book fold modules with added support for longer sheets, while reducing the overall size of the system.

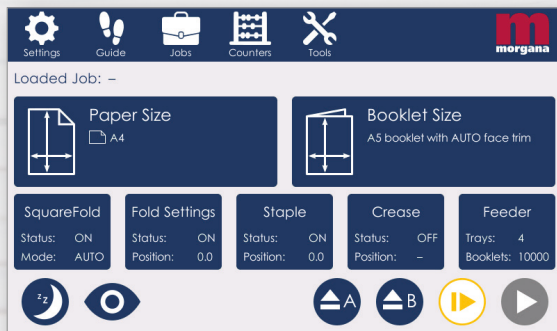
A completely new design, two-in-one square folding and face trimming features in a single compact module. The high performance quality square folding functionality ensures a high-quality booklet on a wide range of media and booklet thickness.

With new trimming capabilities, the new, moving knife can cut down to 99mm long booklets in a single cut, speeding up the process to enable a wider range of trimming inline. This gives the operators booklet size flexibility without the need to handle custom sized paper.

The FM4000e includes a book stacker in its standard version. The stacker can be folded down to allow virtually unlimited stacking capacity.

Easy to use interface

Simple to use 7" touchscreen graphical interface with easy job setup and adjustment of applications.



Available as a **hand-fed** device, or with the **VFX feeder**

Key Features

- Produce square folded booklets from A6 to A4 landscape, or large format 297 x 297mm
- Corner stapled documents in portrait A4
- Edge stapled documents in portrait and landscape A4
- Up to 140 or 200 page booklet capacity
- Supports up to 660mm long sheets without CST or 620mm with CST
- Up to 30k per month with maximum peak volume of 40k





Morgana BM5035/BM5050 Series

A new kind of Booklet Maker that can produce **landscape format books**, 2-up and more. The BM5050S, with optional **4 stitching heads** means **higher productivity and efficiency**



Morgana BM5035/BM5050 BM5035S/5050S

The booklet maker is available in multiple versions to meet your exact requirement. The BM5050 and BM5035 feature two maintenance-free **staple** heads, and the BM5035S and BM5050S come with two or four **stitching** heads. These systems are engineered for mid-to-high volume customers with features exclusive to this class.

The BM5000 series delivers new applications, for example A4 landscape books, by processing sheets up to 620mm long. The BM5035S/5050S, with its optional 4 stitching head configuration, lets you finish jobs that have been imposed 2-up on a sheet. This functionality offers you higher productivity and reduced costs per book.

Modules

VFX Feeder: a high capacity vacuum feeder capable of feeding a wide range of paper types and weights with minimal operator adjustment. The VFX includes two paper trays with a combined capacity of up to 5400 sheets. Feeding has never been so easy and reliable!

Morgana BM5035 and BM5050

The Morgana BM5000 series is engineered for mid-to-high volume customers, with features exclusive to this class. This versatile system can be equipped with an optional CST and VFX Feeder.

The BM5000 series seamlessly delivers professionally finished books with a SquareFold spine. A wide range of booklets, including A4 landscape applications can be produced by processing sheets up to 620mm long.

The BM5050S, with its optional 4 stitching head configuration, lets you finish jobs that have been imposed 2-up on a sheet. This functionality offers you much higher productivity and efficiency.

SMALL BOOKS 105 x 206mm with staple 105 x 120mm with stitch	LARGE BOOKS 320 x 305mm with 5mm face trim	50 sheets 200 pages	35 sheets 140 pages
--	--	-----------------------	-----------------------

*Size will change with ST module

Morgana BM5035/BM5050 Series

FM5000 Finishing module: FM5000 includes the face trimmer and SquareFold assembly in one unit. The combined unit optimises floor space and will support the larger book formats.

CST Crease side trimmer module (Optional): the crease and side trim unit produces professional looking, full bleed trimmed and creased booklets in a cost-effective, compact module. *(Must be used in conjunction with a feeder)*

ST5000/Side trimming module (Optional): The ST5000 is a high end 2-side trimmer and enables a second option to achieve full bleed booklets. The ST5000 cuts the top and bottom of the book after it is stapled and folded to ensure optimal finish.

Note: The ST5000 cannot be combined with the CST 3.0

Convenience feeder (Optional): with a capacity of up to 800 sheets, it can either feed covers or can be used as an alternative feed point, to make a simple, compact landscape booklet maker without the need for an additional feeder module.

50 Sheet upgrade kit: both models can be upgraded to a 50 sheet - 200 page platform with the addition of this kit.

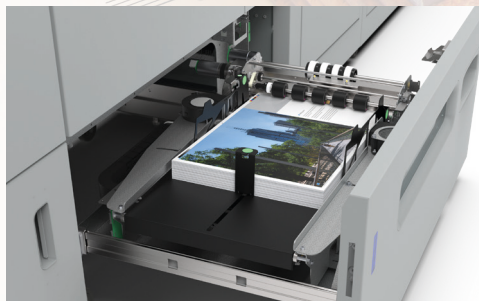
Stapling: The BM5035 or BM5050 come equipped with 2 easy change, low-maintenance, heavy duty staple cartridges.

Stitching: The BM5035S or BM5050S stitch from wire spools. Each spool contains approx 50,000 stitches depending on the thickness of the book.

The leg length of the stitch can easily be adjusted from job to job without using tools.

Barcode reader kit (Optional): The VFX can be equipped with an optional Barcode reading kit. The barcode kit enables variable page count jobs and ensures set integrity when document accuracy is critical.

Available as a **hand-fed** device, or with the **VFX feeder**

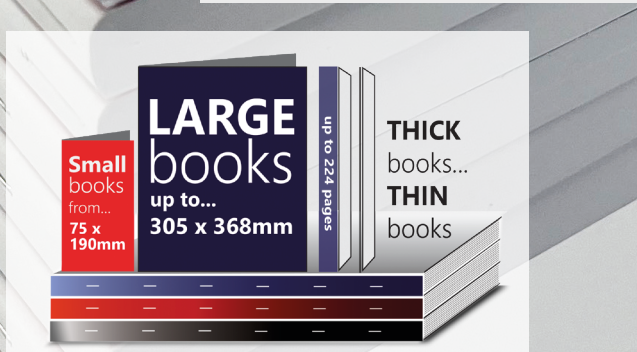


BM5035 equipped with CST unit and VFX Feeder



Morgana PowerSquare™ 7000

Production booklet making redefined: blending unmatched durability with **versatile finishing** options, including **large format** and **landscape capabilities**



Precision and flexibility in every page

Introducing the PowerSquare 7000, a collaborative development that stands at the forefront of booklet making technology. As we approach the launch of this advanced system, we invite you to explore its capabilities designed to cater to a broad spectrum of print finishing needs with a focus on functionality, reliability, and user-friendliness.

The PowerSquare 7000 is not just a new product; it's a direct response to the evolving needs of print production environments. With the capacity to handle a diverse range of media up to 350gsm, and the flexibility to produce both A4 landscape and Letter-sized landscape booklets, this system is engineered to adapt to various applications from commercial print jobs to in-house publishing tasks.

Morgana PowerSquare™ 7000

Produce books with our **signature square folded** finish to **A4 landscape or larger square 297mm format**

Recognizing the diversity of booklet making requirements, the PowerSquare 7000 is offered with a range of optional modules and features. This allows for a tailored approach to meet specific production demands, whether it's enhanced productivity, improved finish quality, or extended unattended operation capabilities.

With configurations ranging from the most straightforward setup to those including advanced features like rotation, side trimming, and crease options, the PowerSquare 7000 is ready to evolve with your production needs. It's more than just a booklet maker; it's a comprehensive solution designed to offer flexibility and scalability.

Key Features

- **Versatile Media Handling:** Supports a wide variety of media, enabling the production of everything from thick cover materials to lightweight papers.
- **Enhanced Stitching:** Incorporates a robust stitch head for high-volume, continuous production without compromising quality.
- **Comprehensive Finishing Options:** Offers unique finishing capabilities including SquareFold, Bleed Trim, and Crease for a professional look and feel.
- **User-Friendly Interface:** Comes equipped with an intuitive color touch UI, simplifying the setup and operation of complex tasks.
- **Adaptive System:** Automatically adjusts to the book thickness, optimizing the process for different booklet sizes and ensuring consistent quality.



A new standard in Booklet Making

Building on the foundation laid by the PowerSquare 224, the PowerSquare 7000 introduces enhancements that significantly increase its productivity, especially for thinner booklet sets. It also expands its capabilities with support for longer sheet sizes, enabling popular landscape booklet formats and offering optional features like the Crease station and Gutter Cut to further enhance the finished product.

Designed with the User in Mind

We've thoughtfully designed the PowerSquare 7000 to ensure it not only meets but exceeds the practical needs of its users. Whether it's the simple setup, the automatic adjustments for book thickness, or the durability that allows it to handle high monthly volumes, every feature contributes to a more efficient and reliable booklet production process.

PST7000, Two Knife trimming

The optional PowerSquare™ Two-Knife Trimmer is a compact module that completes the booklet making process by trimming the top and bottom edges of the book after it's made. This reduces workflow steps by eliminating pre or post press trimming on a guillotine. It's a professional solution for full-bleed printed work, especially important for colour printed applications. The trimmer can be equipped with a gutter cut option to enable efficient 2-up production of smaller format books.

Plockmatic VFX Feeder

High capacity **Vacuum feeder** for the **7000, 5000** and **4000 series booklet makers**



BM4000 shown with VFX Feeder



BM5000 shown with VFX Feeder



PSQ224 shown with VFX Feeder

VFX Feeder

The Plockmatic VFX is a high capacity Vacuum Feeder capable of efficiently feeding a wide range of paper types and weights up to 15,000 sheets per hour. It's equipped with highly automated vacuum feed technology specifically designed to handle the widest range of pre-printed media. You can achieve maximum productivity with the Automatic Tray Switching feature, this enables long unattended runs and the loading of empty trays during a run.

Key features

- 5400 sheet capacity High Capacity Vacuum Feeder
- Utilizes latest vacuum feed technology
- Adaptive Fan Control automatically adjusts air flow for varying media sizes and weights
- Advanced double sheet detection with infrared and ultrasonic sensors
- Two tray configuration allows for loading paper during jobs and uninterrupted production
- Enhanced performance on thin media
- Enhanced performance on difficult curled media

- Altogether, the feeder's automated technology allows it to feed a wide range of today's media with little or no operator adjustment

The main sections of the Plockmatic VFX are the two loading trays. Each tray is equipped with vacuum feed technology and two types of double sheet detection sensors. Anti-static bars are available as an optional addition to the machine and are highly recommended for use in static environments or non-climate-controlled environments where humidity is low.

The VFX contains two vacuum paper trays, the two-tray configuration allows for loading empty trays during a run, which results in uninterrupted production. Each tray has a capacity of 2700 sheets (80 gsm plain paper) for a total machine capacity of 5400 sheets, and is capable of feeding stock up to 660mm long and 355mm wide, in this configuration with the BM5000 max supported sheet size is 320 x 620mm. Sizes vary with the CST.

APC Sensor Technology

Our new Adaptive Process Control (APC) monitors the sheet feeding, delivering an outstanding reliable feeding performance.



Precise separation of each sheet from the stack is essential for reliable feeding. Plockmatic's patented SP-sensor measures sheet separation in the "float area" and adjusts tray position and airflow. A row of multiple sensors work together with an advanced program to create a self-adjusting automatic mode that will reposition the paper stack while running. This supports reliable feeding for the widest range of media types.

Automatic Tray Switching

Maximum productivity for longer jobs is achieved through Automatic Tray Switching, this enables long unattended runs and the loading of empty trays during a run.

Thin and curled media

The VFX is equipped with completely redesigned geometry in the vacuum feed area to improve performance on thinner media.

Curled media is a challenge for any feeding system. The VFX has an enhanced feeding performance, specifically designed to handle media that has curled.

The **barcode** kit enables **variable** page count jobs and ensures **set integrity**

1D and 2D Barcode reader kit

The VFX can be equipped with an optional Barcode reading kit. The barcode kit enables variable page count jobs and ensures set integrity when document accuracy is critical.

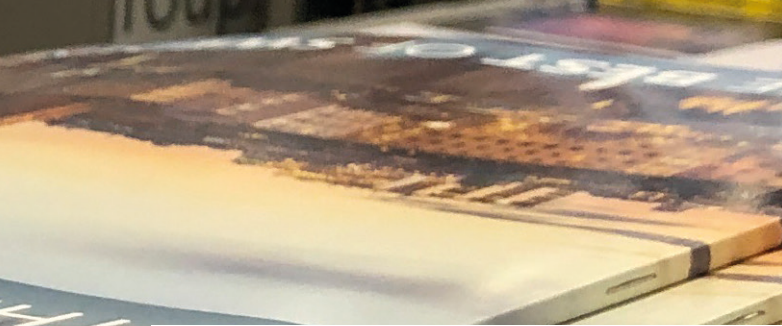
The barcode option for the VFX feeder takes the NearLine workflow to a new level. With 2 readers (1 in each tray) every sheet feed is monitored and provides set integrity and feeding information to the booklet making system. Sheets could be fed from both trays and set size could vary anywhere within the booklet makers capability. This makes it an ideal solution for financial reports or similar type of documents where each booklet is personalised.

The following barcodes are supported:

1D Barcode:	2D Barcodes:
Code-39	DataMatrix
	PDF417
	QR code

Reader can handle 10mil resolution on BCR code





SMALL BOOKS 100mm x 120mm	LARGE BOOKS 241mm x 325mm	THICK books... THIN books!
-------------------------------------	-------------------------------------	---

Plockmatic PL104

A separate **SquareFold** unit, or an **integrated option** available in all our **booklet making systems**

Morgana SquareFold PL104

The Plockmatic SquareFold PL104 adds increased value to your booklets by giving them a professional, perfect bound look with the security of a stapled finish. Booklets from landscape A4 to A6 size can be produced on this versatile, simple to use machine.

Adding a SquareFold finish to your books means that it is possible to print onto the spine of thicker booklets and makes them much easier to pack and distribute.

This revolutionary device can be used as a hand-fed unit attached to the BM60/61 Booklet maker or linked to a wide range of traditional and digital finishing devices.

Specifications:

Capacity	22 sheets of 80gsm
Speed	Up to 1800 books/hour
Squarefolding modes	3 and by-pass
Booklet size	max. 241 x 325mm
Booklet size	min. 100 x 120mm

Morgana BM60

Morgana BM60 booklet maker

The Morgana BM60 Booklet Maker is a compact and simple to use booklet maker for hand feeding.

This machine is able to saddle staple and fold booklets of up to 22 sheets of 80gsm paper, giving up to 88 page booklets. Side and corner stapled documents can also be produced with this versatile machine. Sheets ranging from 60gsm to 250gsm and from SRA3 to A5 can be run to produce A6 to A4 sized booklets. Booklets with loop stapling can also be produced, by simply changing the stapler head.

Various functions are engaged or disengage from the operator panel: manual or automatic mode, stapling off for folding only or folding off for stapling only.

Up to 1800 booklets can be produced per hour on this well proven and sturdy product machine. The BM 60 is a market leader for the hand fed booklet maker segment.

The BM60 can also be connected to the Morgana Squarefold 104, to create the look and feel of a perfect bound book.

Key Product Features

- 1800 booklets per hour
- Saddle staple and fold
- Up to 88 page booklets on 80gsm stock
- Media weight: 60gsm - 250gsm
- Media size: SRA3 - A5
- Side and corner staple
- Booklet sizes from A4 - A6



Plockmatic SquareFold Trimmer

If you've got another booklet maker, turn your **booklets** into professionally finished square fold books with the **SFT**

Plockmatic SFT

The Plockmatic SFT converts existing books from any booklet maker into a face trimmed, SquareBack book. It has a booklet compatibility ranging by size from A5, through A4 landscape books, up to 320 x 320mm. It processes up to 50 sheets of 80gsm paper stock.

Operator Assisted Three-Side Trimming

Not everyone has access or the time to use a guillotine for short run jobs. The Plockmatic SFT can also process booklets for bleed trimming in a hand feed operator process. Insert the finished booklets, first to trim the top, then a second time to trim the bottom.



Full bleed booklets are now an option for small CRD's and office installations.

The Plockmatic SFT adds two key functions – booklet square folding and trimming. The result is a professionally finished document – with the sharp SquareFold spine and trimmed front edge.



Morgana DocuFold and AeroFold

High Speed suction fed paper folders. **Fold up to 27,000 sheets per hour**

Morgana DocuFold Pro

The Morgana DocuFold Pro is a fully automatic paper folding machine. Equipped with the latest Smart-screen technology, it enables an operator with minimum training to carry out a variety of folds from an icon driven touch screen. An unlimited alpha numeric memory is available to store all standard and non standard jobs. All Morgana high speed folders are supplied with a scoring and perforation module as standard.

Key to the Morgana DocuFold Pro design criteria was a machine with a high degree of automation. Operation is therefore simplicity itself. Enter the sheet size and fold type on the DocuFold Pro Smart-screen and the machine automatically adjusts the fold plates and delivery rollers electronically.

To control curled paper, and other potentially difficult media, the pressure suction chamber which is built into the feed table, gently pulls down each sheet as it is being fed into the fold rollers.

The fold rollers will also compensate for most types of fold or paper weight without the need for adjustment, further enhancing the ease of use.



Built-in anti-static brushes assist in the discharge of statically charged print material, one of the most troublesome problems faced by document finishers today.

AeroFold Plus

The AeroFold Plus is a belt fed suction feed folder which can fold various types of paper, such as offset, coated, art, digital printed papers plus much more. Optional scoring and perforation module available.



Morgana Junior DT Folder

Fold up to 14,400 sheets per hour from A6 up to A3, with fully automatic fold type adjustment



Junior DT-A Folder

The Junior DT-A is a versatile and easy to operate folding machine that can handle documents up to A3. The adjustment of the folding plates is done fully automatically, select your application by pressing the start button and the machine starts folding.

The Junior DT-A handles the paper with a maximum speed of 7,200 sheets/h, the automatic feeding station has a maximum capacity of 500 sheets of 80gsm, while the conveyor stacker guarantees an accurate storage up to 300 sheets. Any adjustments, depending on the size and fold type is done automatically.

The Junior DT-A is equipped with a digital pre-counter (count-down-function) with interval mode. This will allow the machine to have a short break after a fixed number of sheets are folded, this enables the operator to remove a fixed number of documents without stopping the machine.



Junior DT-M Folder

The Junior DT-M is an extremely economic solution for folding high volumes of paper fast and accurately. Versatile and easy to use, this folding machine is able to handle sheets up to A3 paper size. The adjustment of the folding plates is done quickly with an easy-to-use interface. Each folding plate is equipped with a fine-tune adjustment to achieve perfect folding results every time.

An integrated conveyor stacker guarantees accurate stacking of up to 300 folded sheets. This conveyor stacker is adjustable according to different paper sizes and fold types and handles the paper with a maximum speed of 14,400 sheets/h. The capacity of the automatic feeding station is up to 500 sheets. A job counter indicates the number of processed sheets. Equipped with a digital pre-counter (count-down-function) with interval mode, this allows the machine to have short break after a fixed number of sheets are folded, this enables the operator to remove a fixed number of documents without stopping the machine.





Morgana AutoCreaser Pro XW

Crease your digital stock without the **cracking**

Most digitally printed work will suffer some degree of toner cracking, more so on coated or heavier weight stock and particularly when work is printed over a fold. The unique creasing rule and matrix in the AutoCreaser range eliminates paper tearing and therefore cracking.

AutoCreaser Pro XW

This option allows 500mm width creasing capability. All AutoCreasers feed 8,500 sheets of A4 per hour and take varying stock weight up to 400gsm and sheets size up to 700 x 500mm, with full width perforation coming as standard. The machine is now equipped with the 'EasyBlade' system, which allows quick, easy, tool free removal and change.

Max. sheet size:	700 x 500mm / 27.5" x 19.7"
Min. sheet size (in automatic mode)	210 x 140mm / 8.5" x 5.5" (100mm / 3.9" wide sheets supported with 'Narrow Sheet Kit')



Morgana AutoCreaser Pro XL

The AutoCreaser Pro XL

The AutoCreaser Pro XL is an easy to use automatic paper creasing system, with a cost efficient vacuum top feeder with load capacity of 200mm.

Running at a maximum of 8,500 A4 sheets per hour, with no loss of accuracy, this is our most productive creaser to date. The AutoCreaser Pro XL takes a sheet size up to **385 x 700 - 1300mm** with the optional extension table, this comes as standard with this machine. This machine is capable of up to 30 creases per sheet and has the optional benefit of a dual creasing module. This allows up and down creasing, or creasing and perforating in a single pass.

The AutoCreaser Pro XL is specifically designed to handle the widest range of media. The Feeder continuously checks the paper float zone and automatically makes adjustments on the fly and ensures highest feed reliability.

Morgana's Adaptive Process Control (APC) monitors sheet feeding in a closed loop process, delivering outstanding reliability and performance.

Max paper size W x L: 385mm / 15" x 700mm / 27.5"*

*385mm / 15" x 1300mm / 51"
with extension table

Min paper size W x L: 93mm / 3.89" x 210mm / 8.25'





Morgana DigiFold Pro XL

Morgana DigiFold Pro XL

Developed from the well proven Morgana DigiFold Pro, the Pro XL is built with our unique, open design, suction feeder that handles stock sizes from 210 - 700mm expanding to 1300mm in length with the optional extension table. This heavy-duty automatic creasing and folding system is designed to work with mid to high volume digital and offset production presses.

The Morgana DigiFold Pro XL is designed to complement the long sheet capabilities of the production printers used today. This opens the door to new applications, such as covers for landscape booklets, book covers for oversized perfect bound books, multi-panel brochures and many other applications created from the long sheets. Equipped with the latest version of Morgana's DynaCrease, the creasing blades can now be easily changed without the use of tools. An additional static crease option can be installed to enable the full range of crease and perforation options, such as tear out coupons and reply cards.

Open design feeder

The system is engineered to simplify the loading and unloading of long "slippery" stacks of paper. The loading and unloading areas are an open design to make it easy to monitor performance and make changing from job to job fast and efficient. The new open feeder design is capable of efficiently feeding a wide range of media types and weights.

Equipped with automated vacuum feed technology, specifically designed to handle the widest range of preprinted media.

The Morgana DigiFold Pro XL comes with a fully automatic belt stacker for folded sheets. It also has a catch tray capable of stacking up to 900mm long sheets in the standard configuration.

The two-in-one stacker combination let's you switch between crease or fold jobs from the user interface, there is no need to reconfigure the machine.

The DigiFold Pro XL can be connected to the BST-4000 Beltstacker for increased stacking capability and easier handling of batch folded sheets.

Max paper size W x L:	385mm / 15" x 700mm / 27.5"*
	*385mm / 15" x 1300mm / 51" with extension table
Min paper size W x L:	93mm / 3.89" x 210mm / 8.25"



Morgana DigiFold Pro XL

Morgana DigiFold Ultra

Creasing and folding with full bleed trim capabilities. Slit, cut, crease, perforate and fold applications in one pass

Morgana DigiFold Ultra

The DigiFold Ultra is a creasing/folding machine with full bleed trim capabilities. It can slit, cut, crease, perforate and fold applications in one pass and is robustly designed to complement mid to high volume digital and offset production presses.

The DigiFold Ultra builds on top of the capabilities of the DigiFold Pro XL by adding in slitting and cutting functionality for full-bleed trim applications. It can produce everything that the DigiFold Pro XL can, but now with full bleed trim, in a single pass. High quality applications such as full-bleed 6 or 8-panel brochures become an easy task even for A4 (8.5"x11") landscape finished formats.

The Ultra's long sheet trimming capability is a strategic complement to the latest printing presses which now offer duplex printing on longer sheets. Instead of purchasing a standard guillotine that can only process up to 560mm long sheets, the Ultra allows customers to fully leverage the capabilities of their new presses, trimming applications up to 1300mm long.

The DigiFold Ultra comes standard with dual folding knives, one DynaCreaser, two slitting knives and one cross-cut knife. The Ultra maintains the high productivity seen on the previous generation Pro XL platforms. There are also attachments such as the Trim Waste Conveyor Belt and BST-4000 Belt Stacker which make the Ultra suited for longer unattended production runs.

Key Features

- Full bleed trimming
- Slit, cut, crease, perforate, and fold applications in one pass
- Automated full bleed trimming of applications on sheets up to 1300mm long
- Creases and folds up to 6 000 A4 / 8.5" x 11" per hour
- User-friendly UI and highly automated
- Full cross perforation available, plus up to five inline perforation/scoring wheels
- Up to 30 creases per sheet (static crease)
- Equipped with both a belt-stacker for folded sheets and a delivery tray for crease only jobs
- Intuitive user interface
- Open design feeder for loading ease and efficiency
- Can be paired with the BST4000-1 for more production heavy environments



After a sheet is fed, two automatically positioned slitters trim off the top and bottom of the sheet and a cross-cut knife is available to cut the lead and trail edges of the sheet. The top and bottom slitters can trim from 3 to 50 mm from the top and bottom edges of the sheet (max trim capability of 50mm will be dependent on trim strip behavior / paper properties).

The two-in-one stacker combination lets you switch between folded and non-folded jobs from the user interface, no need to reconfigure the machine. Full Bleed Trimmed, non-folded jobs will come out on the lower stacker for non-folded sheets.

The optional table extension kit allows for applications made from extra-long sheets all the way up to 1300mm/51.2" in length. This will allow for processing of applications such as full-bleed trimmed extra-long banners and 8-panel A4 brochures.



Creasing and folding styles

Creasing styles

AutoCreaser Pro XL

Creasing on covers for perfect binding

One crease (for a thin book) Two creases (spine only) Four creases (spine and hinge)

Five creases for spine, hinge and flap Four creases for flat spine, hinge and flap Six creases for spine, hinge and double flap

Folding Patterns

Parallel Fold Accordion Fold Short Fold

Letter Fold Double Parallel Fold

Open Gate Fold Open Gate Fold with creased line

Folding & Creasing styles

DigiFold Pro XL

Creasing on covers for perfect binding

One crease (for a thin book) Two creases (spine only) Four creases (spine and hinge)

Five creases for spine, hinge and flap Four creases for flat spine, hinge and flap Six creases for spine, hinge and double flap

Folding Styles

Parallel Fold Accordion Fold Short Fold

Letter Fold Double Parallel Fold

Open Gate Fold Open Gate Fold with creased line

Perforation

Examples of short edge fed perforating with optional perforation blade

*The above perforation pattern requires 2 passes on the DigiFold Pro XL or single pass on the AutoCreaser Pro XL

* Optional second/crease/perforation tool required for some applications

AutoCut Pro

Highly accurate, high speed card cutting, slitting and creasing in one easy to use system

AutoCut Pro

The AutoCut Pro is an extension to our traditional range of creasing machines and delivers the benefits of three functions in one – highly accurate cutting and slitting and high speed creasing in an easy to use system. Especially suitable for automatically producing professionally cut business cards. Whether you are a small business or large corporation, this high performance cutter is capable of producing 1000s of cards a day.

Today's digital presses are more powerful than ever and so the need for finishing technology that turns this power into great applications is essential. The AutoCut Pro's unique capabilities enables you to trim the lead, trail edge, top and bottom from a sheet and crease it.

The AutoCut Pro is equipped with an upper-belt

tri-suction feeding mechanism which can take a wide range of paper stocks, with sheet sizes from 210 x 210mm up to 330 x 700mm with optional long sheet kit - and paper weights from 120 - 350gsm.



The feed table automatically elevates to separate the printed sheets to alleviate mis-feeding and damage, while also preventing roller-marks occurring on the finished products.

For ease of use, the 4" touchscreen enables the user to find any of the 16 pre-set templates, or any of the 40 customised jobs that can be stored and recalled for many applications.

AutoCut Pro specifications

Stock weight range	120 - 350gsm
Sheet size range	210 x 210mm 330 x 490mm
Job memories	16 preset 40 customised
Cutting speed	8 sheets per minute, 21-up business cards cut from an SRA3 sheet
Creasing speed	83 sheets per minute based on A4 with one centre crease






Bar-code Reader
Barcode Reader
Enabled

750mm

Maximum Sheet Length

AeroCut X

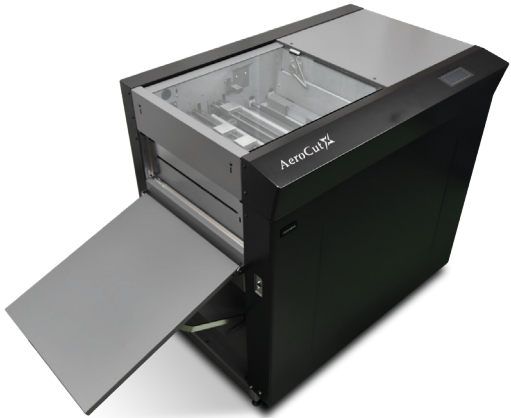
A reliable and versatile **multi-functional card cutter** and **slitter**...all in one pass

AeroCut X

The AeroCut X is our basic slitter/cutter/creaser that can change job programs instantly. An ideal solution for finishing especially short-run digitally printed applications, such as business cards - 10,800+ full bleed standard business cards per hour, post cards, invitations, greeting cards, leaflets, tickets and more.

The AeroCut X has an innovative patented feeding mechanism that drastically reduces the risk of double feeds and miss-feeds, this gives you greater productivity, accuracy and finishing every time. It features 2 single blade slitters to trim the top and bottom margins from the sheets, and 2 double blade slitters that remove centre gutter and deflects the waste into a bin. The durable self sharpening slitter and guillotine cuts stocks up to 370 x 750mm - 400gsm, while the air-suction top feed system feeds coated stock precisely, feeding one-by-one from the top of the pile on the feed tray,

The AeroCut X now has detachable rollers, making cleaning and maintenance very easy.



AeroCut X specifications

Stock weight range	120 - 400gsm
Sheet size range	210 x 210mm 370 x 750mm or up to 1600mm in flex-mode
Job memories	266 pre-set 150 customised
Cutting speed	8 sheets per minute, 21-up business cards cut from an SRA3 sheet
Creasing speed	36 sheets per minute based on A4 with one centre crease

AeroCut X Pro specifications

Stock weight range	120 - 400gsm
Sheet size range	210 x 210mm 370 x 750mm
Job memories	266 preset 150 customised or up to 1600mm in flex-mode
Cutting speed	9 sheets per minute, 21-up business cards cut from an SRA3 sheet
Creasing speed	68 sheets per minute based on A4 with one centre crease

AeroCut X Pro

Our most **productive** and versatile **multi-functional document finisher**. **Slit, cut, crease** and **perforate** all in one pass

AeroCut X Pro

The AeroCut X Pro is the latest in Morgana's range of multifunction finishing devices, designed to automate the key finishing processes in one simple to operate, compact machine. The machine is a highly accurate slitter, cutter and creasing device, that can take your oversized stock up to 370 x 750mm (or up to 1600mm with optional extension) from a digital or litho press and deliver a wide range of finished documents. It can also perforate stocks both across and along feeding direction. The Cross perforation unit enables the machine to perforate sheets across feeding direction, both strike and partial perforation. The jump perforation unit includes 2 perfin wheels, this enables the machine to perforate sheets along feeding direction, both full length and with jump perforation.

The AeroCut X Pro features 2 single blade slitters to trim the top and bottom margins from the sheets, 2 double blade slitters remove the bleed from the centre gutters and deflect wastes into a waste bin. The durable self sharpening guillotine cuts stocks up to 400gsm.



The AeroCut X Pro's air-suction top feed system feeds, precisely and without damage, a variety of weight and quality of stock one-by-one from the top of the ream. The feed tray has a stacking capacity of 100mm.

The AeroCut X Pro is an ideal solution for finishing especially for short-run digitally printed applications such as business cards, cutting 16,000 standard cards per hour and 7,000 post cards per hour from an SRA3 sheet. It will also cut invitations, greeting cards, leaflets, tickets and much more. A bar code reader gives the machine the capability to read a barcode for job changing and to prevent errors.

The AeroCut X Pro has detachable rollers, not only making cleaning easy, but gives better access to components in case of a paper jam.



Plockmatic Group
John Smith
MARKETING MANAGER
Morgana Systems
Avenue, Knowhill 23

Optional ColorCut Pro Server Station

The ColorCut software seriously enhances productivity. Supplied complete with pre-installed Windows® PC and ColorCut Pro software suite, with a flat screen monitor, mouse and keyboard.

Also includes software user licence for 2 additional seats.



ColorCut SC6500

High-speed cutting and creasing in a 'No Wires' working environment

SC6500 - Automated sheet fed digital die-cutter for sheet card and labels with creasing

Building on the successful SC6000 series, the new SC6500 offers a new 'No Wires' working environment.

The SC6500 is a compact dual tool digital cutter offering a highly advanced and reliable high capacity (1,000 sheets) auto-sheet feeder to cut and crease light sheet card (up to 350micron), or labels, to any shape without any set up costs.

With its unique and reliable vacuum belt feeder, the SC6500 can be left to cut unattended, while the camera registration system automatically retrieves cut files by reading the QR codes on each sheet.

The 'No Wires' working environment allows users to operate the cutter without being connected to a PC or to learn a new software program. This especially suits the production and manufacturing environments, where a fast turn around time is essential.



Easy to use automatic job retrieval

When creating jobs, ColorCut Pro applies an auto-assigned QR code to each design, whilst auto-saving the cutting file to the ColorCut Pro Job Library.

The SC6500 checks the QR code on each sheet, retrieves the associated cut file and proceeds to cut and crease as required - even if the sheet is presented at 180°. Choose to cut a single sheet or thousands sheets on an unattended run.

SC6500 Specifications

Crease capability	750gf max 350micron
Max. media size	340 x 710mm
Contour cutting size	330 x 700mm
Max. cutting speed	1060mm per second
Machine dimensions	w830 x d850 x h1230mm

SmartTags are left in the cut lines to retain the item in the sheet - leaving a tidy and manageable stack of finished complete sheets in the catch tray.

High-capacity auto feeder works in conjunction with air blade separation and automated jog function, to present every sheet perfectly for the cutter, every time.

ColorCut SC7000 Pro^T & SC7000 Pro^T XL

The **SC7000 Pro^T** and **XL** models combine **ultra-reliable feeding** with an **instant job retrieval** system and **high-speed cutting** and **tangential creasing**



ColorCut SC7000 Pro^T

These superb, and unique, dual tool cutter/creasers are a hybrid blend of flatbed, sheet-fed, tangential and contour cutting technologies, designed to deliver the benefits of each technology in a compact, affordable and productive unit.

This fully-automatic addition to your studio or production line, can produce point of sale, packaging, and kiss-cut labels in absolutely any shape you wish, in a highly productive and totally versatile way - all from your own pre-designed and printed artwork!

Equipped with an amazing dual tool head that incorporates a premium flatbed style active TANGENTIAL creasing wheel,

makes this device completely unique, enabling you to cut and crease paperboard up to 450 micron and handle a diverse range of media, including paper and synthetics inbetween.

Couple all of this easily usable convenience and functionality with the QR code driven workflow for total unattended automation and you have an extremely powerful, flexible system at your disposal, capable of rapidly processing up to 1,000 sheets, even with multiple mixed jobs in the same stack!

ColorCut SC7000 Pro^T/ Pro^T XL Specifications

Max. media size:	340 x 710mm XL Model: 520 x 720mm
Effective contour cutting area	330 x 700mm XL model: 510 x 700mm
Crease capability	Tangential wheel 2.5kgs (2,500gf) Max 450micron
Auto-sheet capacity	105mm stacker height (Up to 1,000 sheets of 80gsm media for auto-sheet feed)
Max weight	15kgs XL model: 30kgs
Type of cut	Die-Cut (with tags), Half-Cut (Kiss-cut) & Perf
Max speed	1060mm per second
Weight (unpacked) inc. stand	145kgs XL model: 175kgs
Power supply	100-240v 50/60Hz, 100w average (320w peak)

ColorCut SC7000 Pro^T XL



Market leading features

- Digitally cut-through any shape on up to 450 micron media, or kiss-cut sheet labels, all at up to 1060mm/sec
- Digital process means no more costly dies or waiting time
- Auto feeder stacks up to 1,000 sheets. Up to 340 x 710mm and up to 545 x 740mm for the XL model and custom sizes - with self-centring function and air blade separation with extendible paper tray
- ColorCut Pro - Production Studio software included
- QR* code/Job Library retrieves associated cut files - even for mixed job batch sessions or rotated sheets
- SmartMark registration delivers incredible accuracy - enabled via included ColorCut Pro software
- Retractable media tray and integral media storage area

*QR codes and SmartMarks are generated as part of the included ColorCut Pro software plugin which integrates with vector artwork created in Adobe® Illustrator® and CorelDRAW®



ColorCut Flat Bed Range

Digital flat bed cutter for on demand applications, cuts absolutely any shape

Flat Bed Cutting Tables

Perfect for light to medium run production, the ColorCut series offers a range of machines to suit the cutting and creasing of virtually any form of print, from cardboard packaging for high-end products and protective cartons, to synthetic point-of-sale items and kiss-cut adhesive labels. The ability to digitally produce single items on demand, also makes the ColorCut perfect for prototyping.

ColorCut flatbeds come complete with a selection of cutting blades and mats to suit a wide range of materials.

Cuts a typical SRA3 sheet in just 30 - 60 seconds. This enables users to easily produce anything from one to 1,000 sheets per day.

Sheets are held securely in place by a vacuum air pump. Suction passes through the perforated hold down table and the mat, keeping sheets flat and secure.

FB1190-T Tangential B1 flatbed cutting table

This new addition to the FB1100 Series is designed to handle media 800 x 1100mm. Introducing the ability to cut a wider range of media with its tangential cutting and creasing tool with an effective cutting area of up to 680 x 1020mm.

Offering a new QUAD TOOL HEAD with both drag/swivel and tangential capabilities, the FB1190^T has increased cutting and creasing forces. This offers outstanding results on FBB and SBB packaging boards and provides a wider range to include N, E and F fluted boards, suitable for packaging and point of sale applications.

The larger info-control panel provides a 'No Wires' working environment for remote locations; view and display your job to cut on the LCD screen, select by name or simply press scan to direct the cutter to auto-select the cut file.

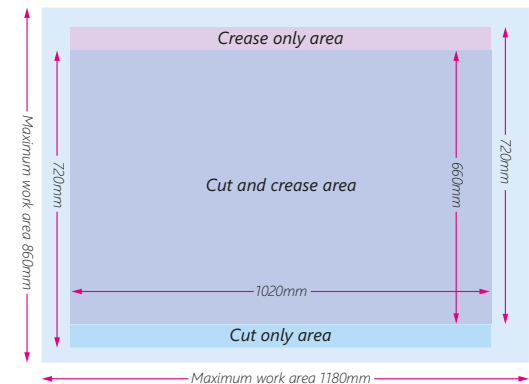
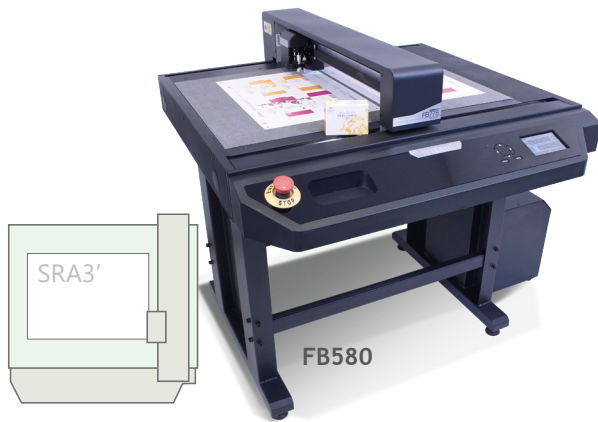


Diagram showing media, cutting and creasing areas with overlap common areas for both

ColorCut FB Range



FB580



FB1190-T



FB780-T

FB780-T Specifications

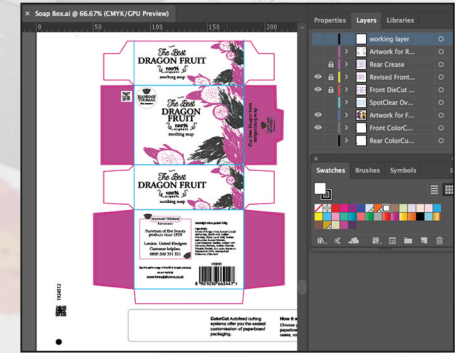
Max. cutting area	480 x 660mm
Max. cutting depth	1000 micron
Max. media area	580 x 800mm
Max. cutting speed	1200mm per second
Machine dimensions	1065 x 915 x 1105mm

FB1190-T Specifications

Max. cutting area	720 x 1020mm
Max. crease area	720 x 1020mm
Max. cut and crease area	660 x 1020mm
Max. cutting depth	3mm / 3000 micron
Max. media area	860 x 1180mm
Max. cutting speed	1,200mm per second
Machine dimensions	1350 x 1360 x 1098mm

FB580 Specifications

Max. cutting area	440 x 580mm
Effective contour cutting area	340mm x 480mm
Max. cutting depth	Paper/card up to 600 micron, Low density media 800 micron
Max. cutting speed	1,200mm per second
Machine dimensions	763 x 860 x 1015mm



The easy to use ColorCut Illustrator plug-in makes file setup fast and easy without compromising on functionality.





Morgana ColorCut FB9500 Pro-T

Fully **automated**, ultra fast, **unattended** production, with the ColorCut **FB9500 Pro-T** digital-die **cutter/creaser**

Morgana FB9500 Pro-T for creative, on-demand digital print finishing!

Developed with performance and flexibility in mind, to provide the perfect production and prototyping, finishing solution for your packaging, P.O.S.

This premium build system has a high capacity rapid auto feeder, paired with a large format continuous belt cutting table and media collection tray, which together offer synchronised auto-feed/load and eject for fully unattended operation and exceptional productivity.

Tactile controls and immersive touch screen driven software provide an intuitive user experience, ensuring you operate the FB9500 Pro-T with the simplest daily operation - and virtually no learning curve.

Key features

- Digitally cut any shape at up to 1200mm/sec
- Digital process means no more costly dies
- QR code driven workflow - QR code/Job Library retrieves associated cut files - even for mixed job batch sessions
- Faultless feeding system - multiple feed procedures and customisable options for advanced sheet separation, enabling the feeding phase of production to be optimised to your needs
- Scans and cuts at the same time*! Concurrent task processing - *Scans and feeds subsequent sheets while cutting/creasing the previous, all in one smooth, synchronous operation
- Up to 20% faster output - typically, a verified, 20% faster than its nearest competitor
- Unique and Patented Rear Mark Scanning System - automatically scans the underside of the sheet, and cuts and creases from the unprinted top, enabling an optimised crease on certain media
- Superb 2.5kg crease with tangential wheel creasing tool
- SmartMark registration delivers incredible accuracy - enabled via included ColorCut Pro software



Morgana ColorCut FB9500 PRO^T

High-capacity and ultra-reliable feeding

The FB9500 Pro^T has been designed to provide unattended operation. The feeding system ensures class-leading performance for card, vinyl labels or even tricky laminated sheets. The auto feeder accepts up to 2,000 sheets, which automatically raises and lowers as required, to prevent sheets curling as a result of a constant air flow to the sides.

Dual tool power - digital accuracy

The digital dual tool head, includes passive contour/drag cut, with active tangential creasing wheel and applies force, individually, for both the cutting and creasing tools.

This combination of tools provides a much wider media handling capability and more defined, smoother crease for thick card up to 1,000 micron. The individual tool actions are controlled via the included ColorCut Pro 5 Production Studio software.

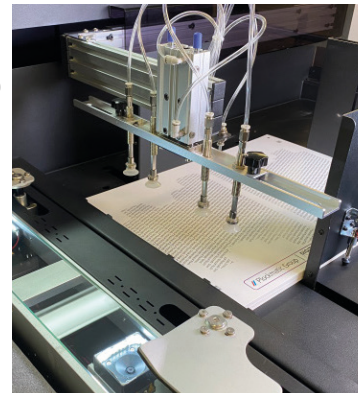
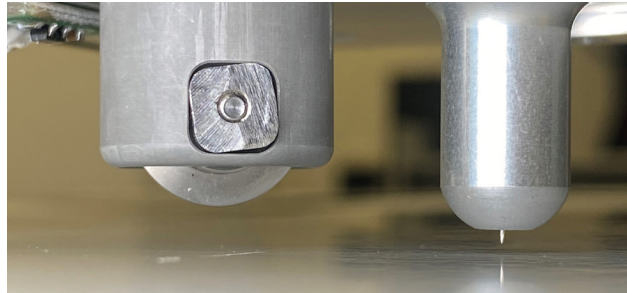
FB9500 Pro^T Specifications

Media sizes - sheet fed	Max: 500 x 710mm Min: 150 x 190mm
Media thickness	0.14mm (140 micron/140g/m ²) - 1mm (1,000micron/800g/m ²)
Auto-sheet capacity	25kg / 217mm
Max speed/Max force	Crease: 2.5kg, Cut: 1.3kg. Speed: 1200m/s
Registration system	Vision3 - High resolution CCD vision system ARMS 9
Cut position accuracy	+/- 100 micron
Power supply	220-240V AC 50/60Hz, 700W average 6.8A
Weight (unpacked)	461kg (FB9500 Table: 249kg, Feeder: 214kg)
Dimensions	3140 x 1095 x 1225 W D H (including media catch tray)

Tangential technology enables the FB9500 Pro^T to lift the tool up from the media, rotate it and lower it back onto the media. Suitable for creasing wheels to enable more defined, smoother precise creases - particularly good for thicker media.

Ai control for automatic job retrieval and optimisation of production processes

The FB9500 Pro^T is built on the foundation of our next generation of Ai based ColorCut Pro software delivering new features, functionality, control and automation, redefining how automated cutters can be used.



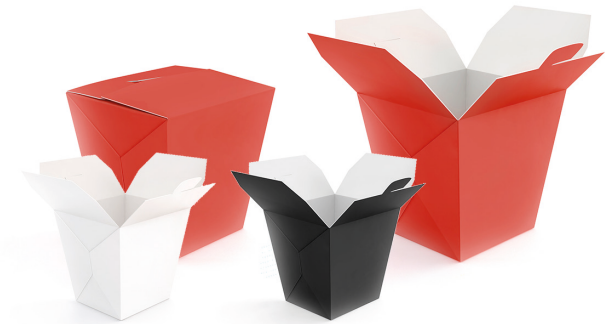
Morgana RDC - Rotary Die Cutter

This revolutionary **RDC** combines speed, easy operation and quality. The ideal solution for your **commercial die cutting** requirements

Morgana RDC

The RDC is the ideal machine for the production of high volumes of boxes, labels and personalised items, such as business cards, kiss-cut labels and postcards. It guarantees a professional quality and has a fast working speed. It is designed to meet the needs of today's digital print applications, including short, medium and long run custom shaped products.

The RDC has an easy to use touch screen that has various setting adjustments for fine tuning the die location to the image, as well as adjustments for waste separation, job change and job storage.



The cutting accuracy can be controlled by working from the lead edge or a printed registration mark of the sheet, adjustable side guide register ensures that accuracy is repeated every time.

Its intuitive settings enable you to produce up to 4,500 sheets/hour, enabling you to quickly meet any finishing requirement.

The RDC is supplied with automatic waste stripping and removal as standard, allowing perfect delivery of the finished items on the motorised delivery conveyor.



AeroDieCut

Easy to operate. The **ideal solution** for your in-house commercial **die cutting** requirements

The AeroDieCut die cutter is ideal for short-run digital print finishing. Whether it's for unique shaped cards or boxes, the AeroDieCut gives printers and marketing service providers a new solution for cutting.

Customers require printed materials much faster, personalised, and in the quantity they need. The AeroDieCut is easier to use than traditional large format die cutters and more productive than cutting plotters and laser cutters. The AeroDieCut can process complex cuts, creases, and perforations on printed materials in a single pass.

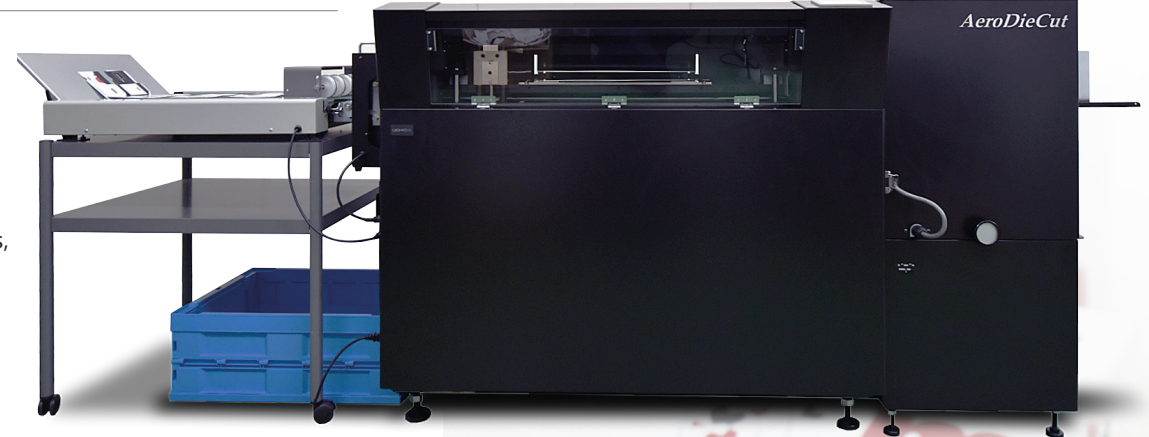
Safe, intuitive and compact

In the past, die cutters were large, heavy duty devices, and could be used for decades, but they required skilled operators. The AeroDieCut was designed to be used by anyone, anywhere, with a focus on operator safety and minimal mechanical adjustments.

The AeroDieCut utilises traditional platen dies, these are tried and tested, easy to obtain, cost effective and the quality of the finishing is great.

The AeroDieCut turns your printed materials into a variety of applications such as cards, boxes, swing tags, shelf talkers, etc.

Combining both traditional and new technologies, the AeroDieCut transforms your creativity into reality enabling your business to grow.



AeroDieCut specifications

Die board size	350 x 550mm
Die board thickness	18mm
Cutting rule height	23.3 - 23.8
Maximum paper size	365 x 515mm
Maximum finishing size	310 x 485mm
Maximum press speed	1,000 sheets per hour
Multiple-up press	up to 5 times/sheets
Machine dimensions	w2700 x d1070 x h1100mm
Job memory	100 jobs
Stock Weight	120 - 400gsm (depending on quality)

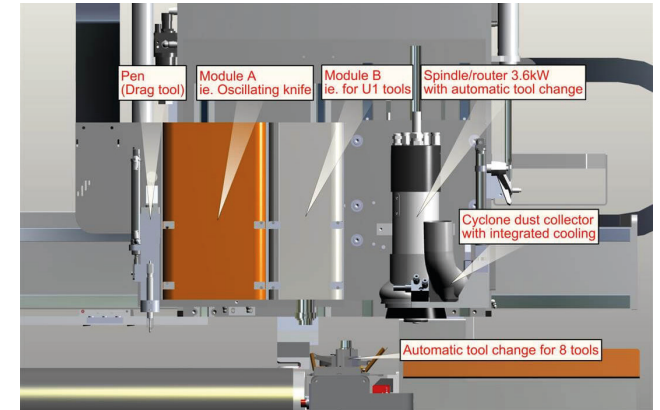


Comagrav Digi Corsa

Cut and rout a wide range of sheet or roll materials **automated** and **unattended** production with **automatic tool changing**

Comagrav Digi Corsa - Think big, cut smarter!

The COMAGRAV DIGI CORSA is a versatile cutting and routing machine that can handle a wide range of materials, making it ideal for various industrial applications. It is equipped with an automatic tool changer, an unwinder, and can function as a table, providing a large-area cutting system suitable for industrial cutting, powerful milling, advertising production, packaging, sales support, exhibitions, and design work.



Key Features:

- **Automatic Tool Change:** The COMAGRAV DIGI CORSA comes standard with an automatic tool changer on its multifunctional cutting and routing plotter. This feature allows for quick and seamless transitions between different tools and operations.
- **Powerful Spindle:** The machine is equipped with a spindle that can reach up to 50,000 RPM, making it perfect for milling a variety of materials, including PMMA, Dibond, aluminum, PVC, and ABS.
- **Interchangeable Modules:** The system's interchangeable modules allow for a nearly limitless range of material processing capabilities. The machine can be easily upgraded with new modules as your business grows or as new materials and applications are developed.



Comagrav Digi Corsa

- **Efficient Waste Management:** The machine features a cyclone dust collector that efficiently removes waste from the cutting table, leaving almost no debris behind. Additionally, the dust collector includes an integrated spray cooling system for cutting aluminum and Dibond, ensuring clean cuts and extending the life of the cutter.
- **Quick Transition Between Operations:** Switching from routing to cutting on the COMAGRAV DIGI CORSA takes only seconds, allowing for a flexible combination of operations.
- **Motorized Cutting Disc:** The machine is equipped with a motorized cutting disc that effectively cuts through tarpaulins, banners, and fibrous materials, both woven and non-woven, enhancing its versatility across different applications.

Overall, the COMAGRAV DIGI CORSA is designed to grow with your business, adapting to new materials and evolving production needs. It offers powerful performance, flexibility, and efficiency in a single, comprehensive cutting and routing solution.

The COMAGRAV DIGI CORSA RC is a highly versatile cutting and routing plotter designed to handle a wide variety of materials, including acrylic, PMMA, aluminum, Dibond, corrugated cardboard, carton, sandwich boards, vinyl, textile, pre-pregs, banners, and more.

Wide-Ranging material handling:

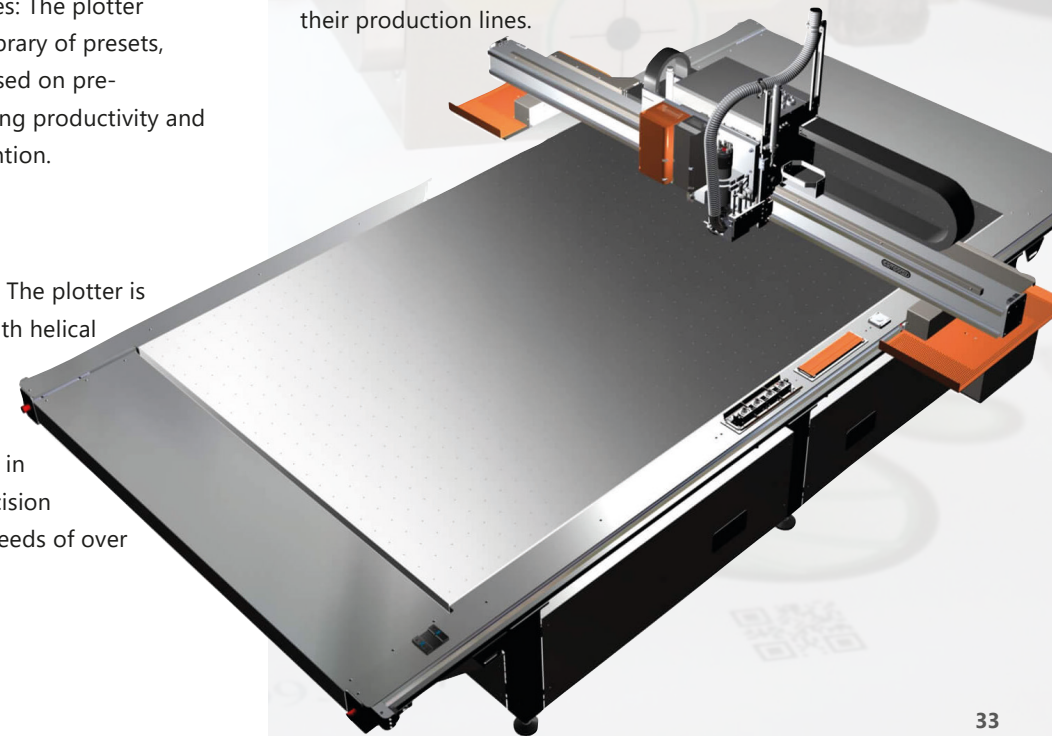
- **Wide Material Compatibility:** The plotter is equipped to cut through a diverse range of materials, making it ideal for numerous industrial and commercial applications.
- **Material Unwinder with Integrated Camera System:** The machine features a material unwinder that automatically feeds the material into the plotter. An integrated camera system reads QR codes from the material rolls, allowing the machine to cut file by file without the need for a machine operator. This automation significantly reduces labor costs, improves efficiency, and lowers maintenance requirements.
- **Advanced Software and Preset Libraries:** The plotter comes with updated software and a library of presets, enabling it to perform precise cuts based on pre-programmed settings, further enhancing productivity and reducing the need for manual intervention.

Technical Specifications:

- **High-Performance AC Servomotors:** The plotter is powered by AC servomotors paired with helical gearing, ensuring high accuracy in cutting operations.
- **Planetary Gearboxes:** These are used in the drives, providing high cutting precision and allowing the plotter to achieve speeds of over 1 meter per second.

- **Robust Construction:** Built with a rigid steel frame and a sturdy vacuum table, the COMAGRAV DIGI CORSA RC is designed for durability, with a lifespan that can last for decades.
- **High Precision and Speed:** The combination of powerful motors, precise gearing, and advanced drive systems ensures exceptional cutting accuracy and fast operation, making this plotter a reliable choice for high-quality production needs.

The COMAGRAV DIGI CORSA RC plotter is a powerful and efficient solution for businesses looking to automate their cutting processes, handle a wide range of materials, and achieve high precision and speed in their production lines.



EvaBind Plus and TC 5500S Hotmelt



EvaBind Plus

The Morgana EvaBind Plus is ideal for the short to medium run environment, offering a simple but highly effective soft cover book production system. With the professional multi-layer glue assembly, including side glue rollers, up to 240 books can be produced per hour.

The system is controlled and operated through a central operator panel. By pressing the Start button the binding process runs in fully automatic mode. A fume exhauster is integrated and can be connected with a flexible hose to any outlet.



TC 5500S Hotmelt

The TC 5500S Hotmelt is the perfect system for strong and professional hot-melt-glue-binding of a large variety of substrates including digital printed sheets.

A unique slitting and fanning device allows a high levelled contact of glue to all sheets to be bound.

The sheets to be bound are held tight in the clamp of the binding carrier by a pneumatic drive system. The clamp moves across the slitting/fanning device (on/off selectable) and the glue assembly into the cover clamp section.

A pneumatic driven cover attachment and side pressing finishes the book with a professional appearance.

The cover attachment can be set up in relation to thickness of spine and substrate of cover. The pneumatic system is silent running.

Professional multi-layer glue assembly including reverse rotating smoothing roller. Up to 320 books can be produced per hour.

DigiBook 200, 300 XL Pro and 450 PUR Binders



DigiBook 200

The DigiBook 200 Perfect Binding Machine is suited to traditional and digital printers who require short to medium runs of PUR perfect bound books to a professional standard. The DigiBook 200 is equipped with a patented closed gluing system where the spine and side gluing is automatically applied by a slot applicator for the utmost binding quality and accuracy.



DigiBook 300XL Pro

The DigiBook 300XL opens the door to high value, large format book production, complementing the rise of the long sheet digital production engines. Now you can offer your customers books with a finished size of up to A3 landscape. Applications such as catalogues, photobooks can all be produced more economically and easily than ever before.

All DigiBooks have the same innovative glue application and cleaning system, with the PUR glue being applied on the book spine and on the sides by independent glue slots.



DigiBook 450

The DigiBook 450 is the most productive machine in the range. This innovative machine is equipped with a patented closed tank gluing system where the spine and side gluing are applied by a slot applicator, for the utmost binding quality and accuracy. It offers higher productivity, more speed, more automation, including book delivery and cover feeder.

The DigiBook 300 XL Pro and 450 are equipped with retractable milling systems, allowing for the production of sewn book/folded sections.

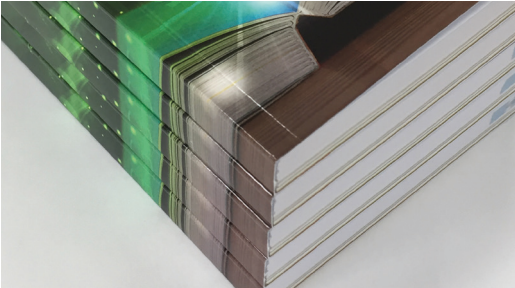


Bourg Binder BB3102

Most economical and strongest binding system

The Bourg Binder BB3102 is a fully automated perfect binding system aimed at medium-run and short-run production environments. The BB3102 combines the proven BB3002 driven at constant maximum speed (400 books/hour) with the Bourg Book Loader (BBL), making it easy to produce a wide variety of bound softcover books, from traditional or digital print streams, with minimal operator intervention.

In less than six minutes, the operator can load up to 120 book blocks into the BBL, and perform other tasks - such as packing books that have just been produced - while the BB3102 operates unattended for up to 25 minutes. The BB3102 offers the capability to use EVA/hot melt or PUR-C adhesive systems depending on the customers' needs.



Existing BB3002 customers will be happy to know that they can upgrade their machine by retrofitting the Bourg Book Loader (BBL) to create the BB3102 and maximise their productivity (please contact a C.P. Bourg sales representative for feasibility).



Komfi Amiga 52 and 76 Laminators

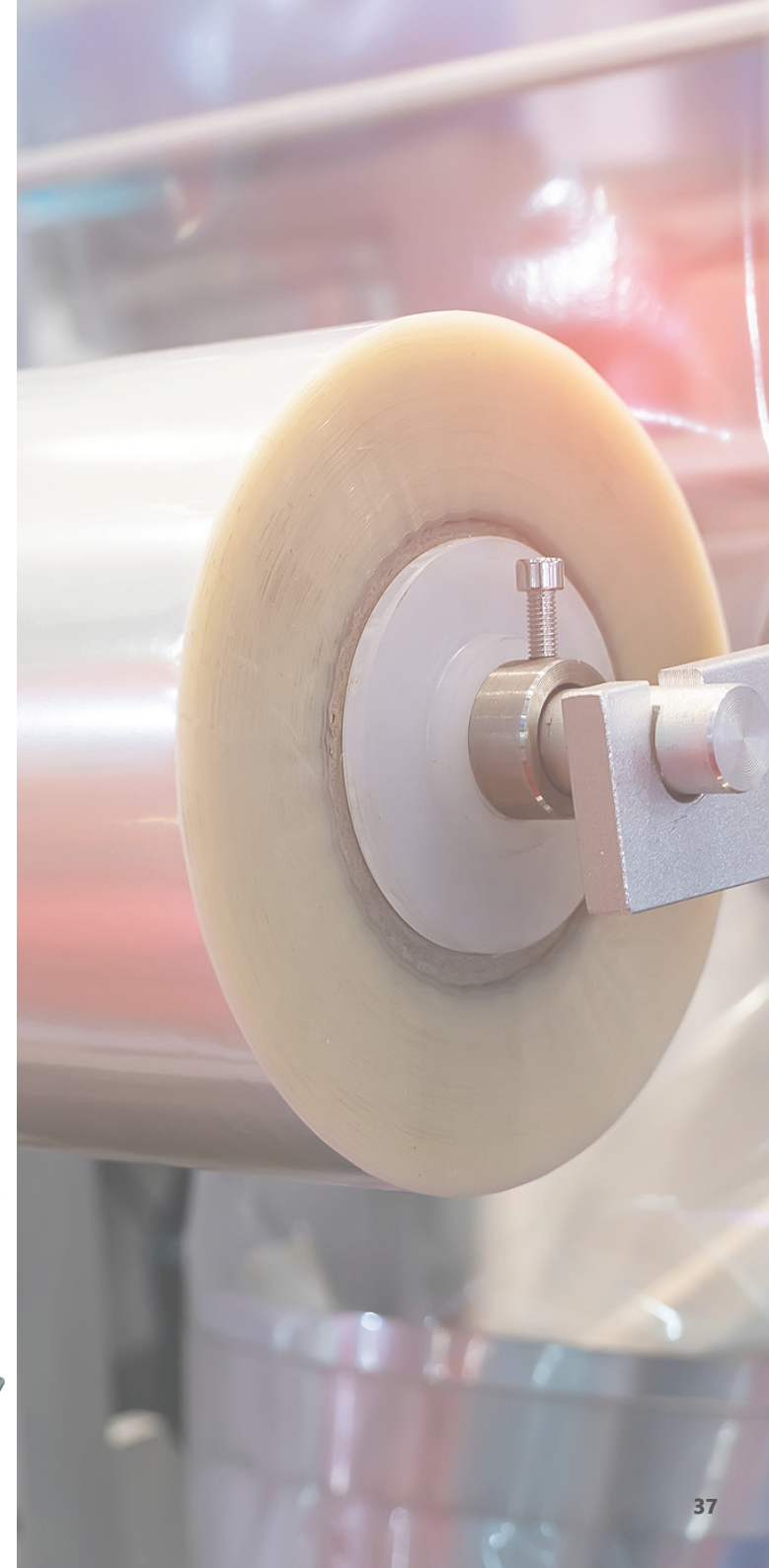
Flexible solution for processing of **small** as well as **middle-volume** jobs

Komfi Amiga 52

- Suitable for digitally printed output
- Flexible solution for processing of small as well as middle-volume jobs
- Output: 4300 A4 sheets/hour (basic variant), 8000 A4 sheets/hour (feeding head)
- Special functions to protect digital prints against damage
- Machine function to facilitate lamination of sheets in range 350-600 g/m²
- Basic configuration
- Bottom suction feeder with possibility of adding the sheets continuously
- Automatic sheet overlap control
- Laminating cylinder heated by infrared heater
- NBR rubber pressure roll
- Automatic sheet separation using built-in perforator
- Combined decurling unit (bar and roller)
- Electronically controlled snapping unit
- Tilting unloading table

Options

- Komfi feeding head
- Film slitter
- Additional perforator on film reel
- Polyurethan pressure roller
- Pressure roller with a special non-stick surface finish
- Antistatic bar
- Jogger table
- Automatic Amiga built-in stacker
- Film loading equipment
- Pallet and film loading equipment
- External embossing equipment
- External stacking frame
- Preventive Maintenance Spare parts Kit





Morgana CF2000

ColorFlare is a compact laminator and foil-flaring device

ColorFlare

The CF2000 is a compact, dual laminator and foil flaring device, designed to offer an in-house decorative effects solution for short-run, on demand digital applications, as well as lamination for traditional litho output too! With the ability to laminate and foil flare straight out of the box, this high-quality production unit will soon start earning its keep, and you, a great reputation!

Market leading features

- Advanced dual roller process for digital lamination, film and foil technologies for digital applications
- Produce multiple jobs and flaring effects with just 1 machine
- No need to have traditional UV coating for special effects
- High hydraulic pressure for a smooth professional finish
- Semi auto feeding with overlap feature
- De-curl bar for flat sheet finish

ColorFlare: Raising ordinary print work to 'extra-ordinary'. ColorFlare has been developed to meet specific print finishing requirements and built to exacting technical standards – with fully controllable pressure and heat processes, devised to deliver optimum results with today's digital print output. Both lamination and flaring-film rolls are available in a choice of widths and lengths to deliver great value for cost-effective production.

Technical Specifications

Media sizes	Max: 390 x 1200mm Min: 200 x 300mm
Media thickness	150gsm to 400gsm
Lamination speed	1m/min ~ 15m/min
Laminating temperature	Max: 140°C
Heating mode	Oil heating
Roller pressure - hydraulic	1 metric tonne*
Laminate/Foil core size	3" (76mm)
Power supply	220~240v 50/60Hz, 3500w
Dimensions W D H	643 x 760 x 1136mm
Weight (unpacked) and crated	210kgs

* actual reading is 970kgs

ColorFlare CF2500 Pro

Automatic feeding for volume production and **premium decorative effects** of your printed sheets

The Morgana CF2500 delivers an all in one automatic feeding solution for both lamination and foiling. With its unique oil roller heating system providing consistent temperatures, lamination results are improved and energy consumption is reduced. Its simple to set up process offers faultless feeding and speedy production – with fully controllable pressure and heat processes, devised to deliver optimum results with today's print output.

Market leading features

- Automatic feeding with frontal air suction
- Pneumatic auto sheet separation
- Dual process for lamination, film and foil finishes
- High hydraulic pressure for a smooth professional finish
- Electronically adjustable speed and temperature via touchscreen
- Easily adjustable de-curling system
- Auto stop function for stack re-loading



Technical Specifications

Media sizes	Max: 390 x 715mm
Media thickness	130gsm to 400gsm
Lamination speed	1m/min ~ 15m/min
Laminate/Foil thickness	20-250 micron
Automatic feeding	Yes
Feeding mode	Dual air suction
Pile height	Max: 280mm/1400 sheets
Laminating temperature	Max: 130°C
Roller pressure	Hydraulic - 1 metric tonne*
Heating mode	Oil heating
Laminate/Foil core size	3" (76mm)
Laminating rollers	Upper: High gloss chromium. Lower: silicon rubber
Power supply	220~240v 50/60Hz, 3200W
Weight (unpacked)	380kgs
Dimensions W D H	1730 x 800 x 1480mm

*Actual reading is 970Kgs



Morgana DigiCoater Pro 400 with VFX or VFL feeder

UV coating gives the perfect finish that **enhances, protects and adds value** to your printed sheets

DigiCoater 400 Pro

UV Coating is rapidly being adopted as a means to enhance, protect and add value to your digital and litho printed documents. The application of a gloss UV Varnish enhances the print quality, colours appear richer, as well as offering protection for documents.

UV Coating is widely considered as being a more environmentally friendly alternative to lamination as virtually no waste is produced in the production process. Unlike laminated stocks, which normally should be treated as plastic waste, UV coated stocks can be disposed of, or recycled as normal printed paper would be.

Unique curing process

Morgana HD LED & Cold UV coaters have removed the risk involved with high temperature conventional UV coaters, eliminating the risk of scorching any substrates. The 'sleep mode' brings the power consumption of the lamps down by 70%. All unpleasant odours on the substrate or the machine are eliminated. The large diameter rollers and optional fluid pre-heating provide a superior finish.



Once coated, the stock is delivered at room temperature - so there is limited distortion or shrinkage of the sheets.

VFX Feeder

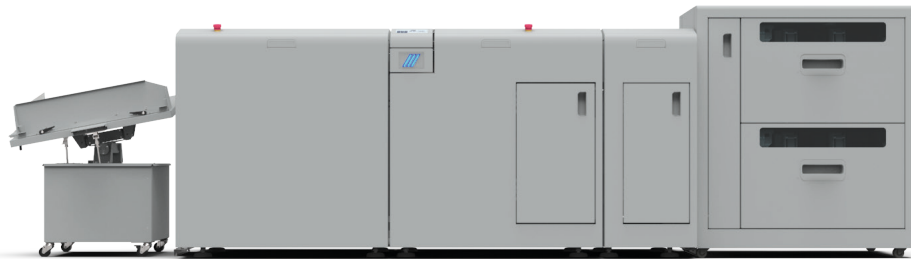
- Up to 5400 sheet capacity
- Two tray configuration allows for uninterrupted job production
- Advanced double sheet detection with infrared and ultrasonic sensors
- Max sheet size 356 x 660mm
- Supports media up to 350gsm

VFL Feeder

- Up to 2000 sheet capacity
- Max sheet size 385 x 1300mm (380 x 720mm when connected to the DigiCoater Pro 400)
- Up to 400 gsm dependant on machine configuration and stock. (For stocks from 400 - 600gsm, these can be hand fed directly into the coating unit, bypassing the VFL feeder).

Morgana DigiCoater Pro 400 HD-LED-UV

LED-UV Coaters are up to **16 times** more cost effective than traditional **lamination**



DigiCoater Pro 400 HD-LED-UV

The Morgana DigiCoater Pro 400 HD-LED-UV is available as an offline coating solution and can be combined with either the Morgana VFX or VFL feeders.

Lowest cost per page in the industry with varnish consumption as low as 2-4 gram/m² dependant on stock to be coated

- Environmentally friendly
- Suitable for food packaging
- Fluid pre-heating enables superior surface finish
- **Automatic Power Sleep** - The LED lamps activate only when a sheet is present. This can reduce power consumption by up to 50%

- **Cold process** - with this cold curing technology, all unpleasant odours on the substrate itself or in the environment around the machine are eliminated making the working environment better for the operator
- **Zero ozone emission** - unlike traditional UV equipment
- **Up to 20,000 hours lifetime on LED Diodes** - this up to 13 times longer than the life of traditional UV lamps
- **Room temperature sheet delivery** - Finished Coated output is delivered at room temperature - no wrinkling or shrinkage and the sheets are ready for further finishing immediately



EBA Guillotines - The 56

The latest **programmable** powered **guillotine** for **increased efficiency** and **productivity**

THE 56

The 56 is the next-generation of programmable powered guillotines – for increased efficiency and productivity, with IR light beam safety curtain and hydraulic clamp drive.

Operation is via 15.6" touch-screen display. The intuitive software with comprehensive features is operated via touch and swipe gestures – just like a tablet or smart-phone. The tilt adjustable display can be ergonomically adapted to body height and lighting conditions.

For maximum operator safety and cutting, the Electronically controlled IR light beam safety curtain on the front table (with status indication in the display and the blade activation buttons) ensure safe two hand cut release.

A cut can be executed safely by means of the EASY-TOUCH blade activating buttons with integrated optical signals indicating the operational status.

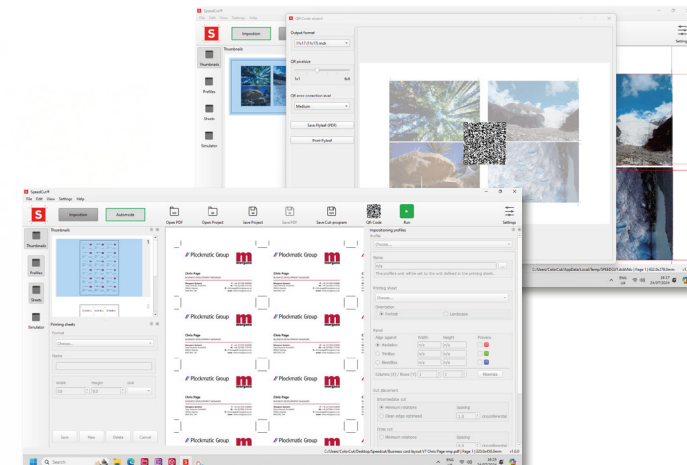
The fine manual adjustment of the back-gauge ensures maximum precision – extremely user friendly via the ergonomic control element at the front of the machine.



The hydraulic precision drive is very accurate, while the clamping pressure is infinitely adjustable and programmable via the touch control panel.

SpeedCut

Add SpeedCut to your system for imposition and cutting co-ordination from start to to perfect finishing. Speed up your processes with more accuracy with less training for great productivity and higher levels of finishing




SpeedCut®
Version: v1.0.0

EBA Guillotines

Innovative small format **guillotines** available in cutting widths from **430mm** to **720mm**

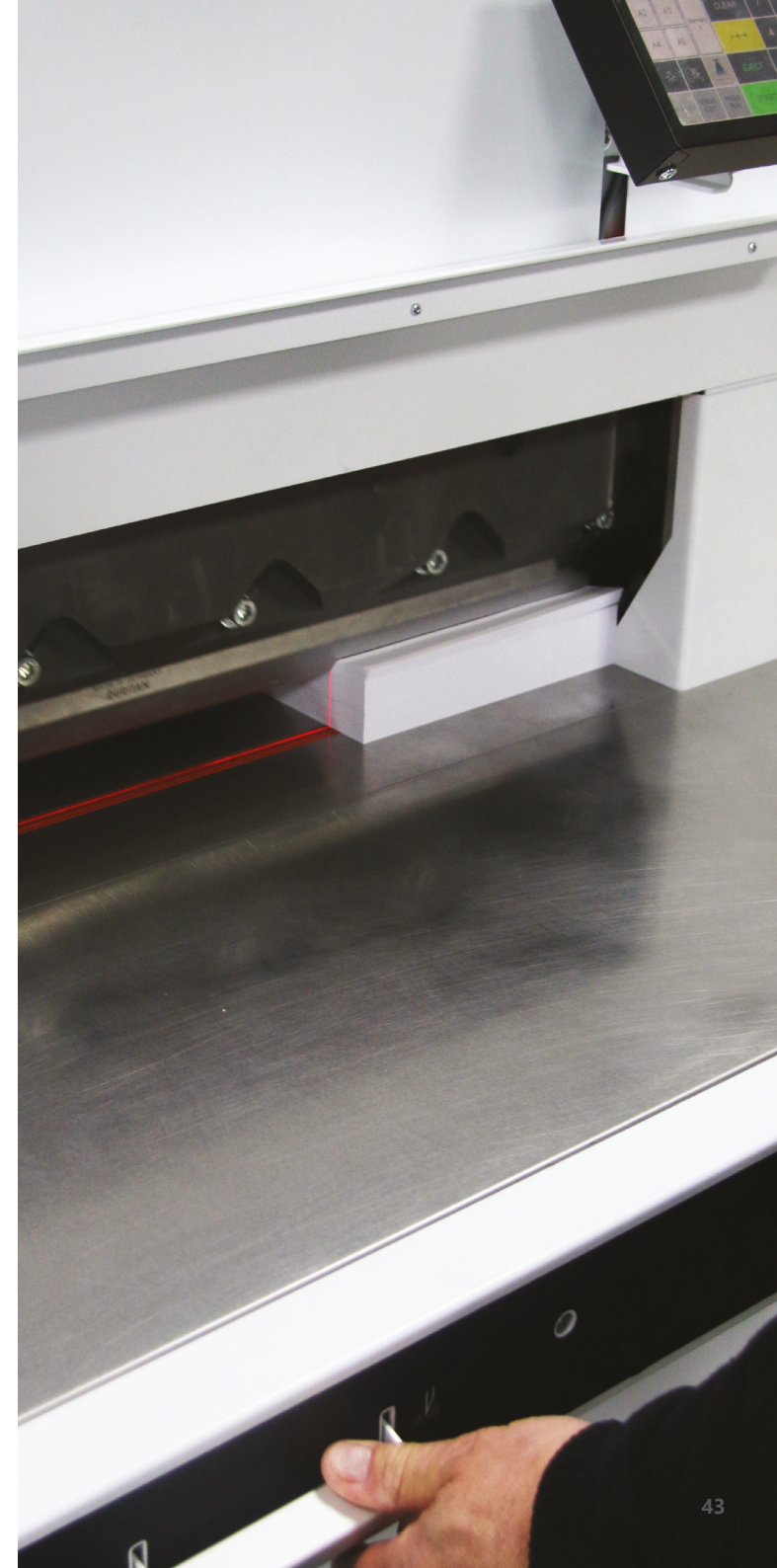
EBA Guillotines

EBA guillotines are the worlds most popular small format guillotines. Designed and manufactured from the highest quality materials, EBA guillotines are easy and efficient to use and come in a range of sizes.

Starting from the attractively priced entry level model - the EBA 4305. This manually operated office guillotine comes with a 430mm cutting length and 435mm table depth (for formats up to A3).

The largest model in the range, the EBA 7260 has a cutting length of 720mm. This model comes with EASY-CUT, hydraulic clamp, programmable power back-gauge with electronic control module and IR light beam safety curtain on the front table.

Safety is paramount in the design with all hydraulic models fully equipped with either safety covers or the latest in IR safety guard technology.





Mohr Guillotines

Designed for **precision** and **cutting accuracy**

Mohr Guillotines

Mohr Guillotines offer precise cutting of sheets sizes up to 66cm and 80cm. Every size is available as the net-workable variant - The Mohr Plus range.

The Mohr Plus range of guillotines are operated via an ergonomically arranged 18.5" colour touch-sensitive display. Repeat sequences can be saved and adapted at any time, the 'Plus' range has 1,998 memory positions available.

In optional digital workflow integrations, Compucut® takes the cutting data supplied as PPF or IDF files direct from the pre-press stage. Compucut® generates the cutting program automatically. To start the cutting program automatically, the machine is equipped with a bar-code reader. This allows set-up times to be reduced to almost zero.

Mohr 66 Plus

Mohr Guillotines Plus

Mohr PLUS Key Features

- Low-profile keyboard with easy-to-understand symbols
- Menu-driven knife change
- Programming during cutting
- Block programming available
- Format tables
- 1,998 Program memory positions
- Program information with plain text
- Option of digital workflow integration
- Process visualization for a graphic indication of material handling
- Production report for acquiring the machine performance data
- Cutting cycle shown with symbols
- Programmable jogging mark
- Clamping time before cutting
- Programmable ejector
- Copy program / Protect program
- Lubrication interval signal

The machine is operated via an ergonomically arranged 18.5" touchsensitive display. Repeat sequences can be saved and adapted at anytime. To do so, the system has 1,998 memory positions available.

Repeat sequences can be saved in one of 198 available memory positions can even be adapted at any time. The cutting programs are either generated manually or menu-driven via the intuitive block programming method

Compucut® GO

For digital workflow integration, the following options are available:

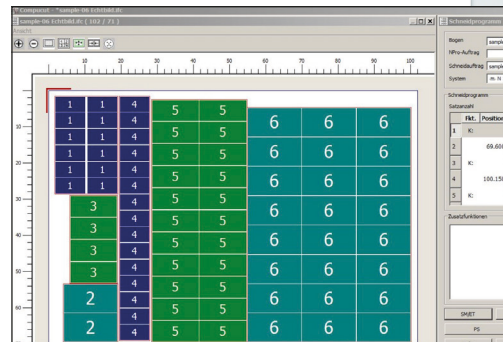
- Compucut® takes the cutting data supplied as ppf or jdf files direct from the pre-press stage
Compucut® generates the cutting program automatically.
- A barcode reader enables the machine to start the cutting program automatically. This allows setup times to be reduced

Process visualization gives the operator a graphic indication of the material handling. This reduces the likelihood of operating errors.

POLAR Compucut® GO is a simple automation solution in the field of cutting. It automatically converts the digital sheet layout into a cutting program which is then transferred to a POLAR cutting machine. This eliminates the programming time spent at the guillotine type cutter.

Compucut® GO epitomizes "Plug and Cut".

POLAR Compucut® is the state-of-the-art software for setting up cutting programs. This software benefits from POLAR's enormous cutting know-how and experience gained over more than 25 years.





DocuPunch +PLUS

Auto punch as easy to use as a copier

The DocuPunch +PLUS is a versatile automatic punching machine designed for medium size runs involving multiple materials ranging from 80 to 250 gsm including acetates or plastic covers and diverse punching patterns including thumb cuts with maximum punched edge of 330mm (13"). It can also punch pre-collated tabbed sheets and offers an output of up to 45,000 sheets (80gsm) / hour.

It is designed with the On-Demand market in mind : setup time in less than a minute, die changes in seconds and hands free operation so your operator is free to perform other tasks. With an incredibly small footprint and heavy-duty casters, the DocuPunch PLUS will fit even in the tightest of space requirements



Wob5000

Wide format semi-auto Wire-O® binder

The Wob5000 is the perfect answer for those digital printers or print finishers having wide format calendars to bind.

It binds 500mm wide documents with up to 9/16" wire and up to 350mm wide documents with all other wire sizes up to 1-1/4" wire at a true output of up to 500 documents per hour.

This instantly adjustable binding machine has a unique closing unit for all wire sizes from 1/4" to 1-1/4" that positions and feeds the documents without the need for stops or paper guides and zero mechanical adjustment.

It can be equipped with an optional plug & play hanger feeder and a front table to support and bind wide format calendars.



Rhin-O-Tuff

Punching and closing the easy way

Rhin-O-Tuff HD7700

The Onyx HD7700 Ultima is the top of the range heavy duty durable table top punch. Combining the Rhin-O-Tuff patented Quick Change Die System with the following exciting new features. The 356mm open ended extra capacity die punches up to 35 sheets or 110 pages of 80 gsm bond paper. The number of sheets depends on the paper weight and punch pattern used.

U-View waste tray holds up to 150% more waste than any other table top punch whilst eliminating troublesome overfills.

The Accu-Set paper stop sets up all hole placements easily and accurately, even on odd sized paper. With a new diagnostic display lights which gives indications of important machine conditions.

Rhin-O-Tuff HD8370 Closing Unit

The HD 8370 Insert-a-bind wire inserter/closer closes 3:1 pitch double loop wire in one easy step, eliminating manual insertion of wire into documents. Easily adjustable for varying sizes from 6mm-14mm. The Onyx HD8370 can be stand-alone or mounted to any vertical Rhin-O-Tuff OD or HD punch (optional mounting kit available).



Reflex Mailing Systems

Mailing with the widest application range in the industry, with a **duty cycle** up to **500,000** inserts per month

Reflex Mailing Systems

This mid range inserting system is ideal for short run job. With a simple and intuitive operation system, its easy automated job change-over makes it suitable for the widest range of applications.

The user interface is both simple and intuitive to use with an easy job programming function. The stock is placed in the inserting module which then adjusts to the sheet size.

Capable of running from DL to portrait and landscape C4 applications, with a document thickness up to 12mm (0.5").

- Automation of manual inserting
- Reprints processing
- Fast turn-around times
- Control reader
- OMR, 1D and 2D
- High capacity feed bin 700 page capacity
- 180cm shingling output conveyor
- Output reading sequence verification
- ADF Integration



Morgana Band-it

The perfect **solution** for **fast, easy strapping**

Morgana Band-it P30 / P50

An automatic strapping machine is a fast and effective way of ensuring your finished documents are kept neatly in order for storage and shipping. The P30/P50 make the operation fast and effortless for the user with speeds of up to 20 Cycles per/min.

- Easy to use operation
- Automatic temperature control
- Three position tension control for light to heavy product

Using the P30/P50 couldn't be made any easier, simply load your stock and adjust the magnetic guide plate to suit. You can choose between three modes to operate. Either manual, automatic or foot pedal depending on which option suits the operator's needs. There's no need to make any adjustments in tape length, so switching from one size job to another is a seamless operation. The operator can also choose from three pressure settings depending on the weight of stock and tension required.



Consumables

Results are always **better** with **quality accessories**

Performance and great results

The best way to get the most out of the machines you buy is to use high quality accessories.

They guarantee good performance and always give the best and most attractive result.

All our accessories are carefully selected and tested to be durable for a long time.

Many of our accessories are also suitable for machines of other brands

Laminate

Plockmatic have both laminate pockets in the most common formats and surface finishes.

When it comes to roll film, we also have the most common types for single-sided lamination and usually in widths of 315 and 420mm.

We also have roll film for double-sided lamination in widths from 305 up to 1400mm

Foil

For foiling, in addition to gold and silver, we offer a number of different colors.

With our foil, you can easily increase the value of the digitally printed media, you can also achieve an effect similar to "spot varnishing"

Wire

We have wire in finished lengths for A4/A5 format 3:1 and 2:1

Plockmatic can also supply spools

Knives and cutting-sticks

We have all knives and cutting sticks in stock for EBA, Ideal and Challenge cutting machines.

Plockmatic can also take care of sharpening knives.

Staples

We have staples for our own and most commonly used staplers on the market

Adhesives

Our range also includes glue for automatic glue binders, both EVA (hot melt) and PUR.





Solution

Application

	A4 Portrait books	A4 Landscape books	A5 Landscape books	High page count books (max.224)	Folding and creasing	Creasing	Folding	Perforating	SquareFold documents	PUR binding up to A3 landscape	Business card, postcards	Cutting, creasing & perforating	Laminated and foiled documents	Labels, packaging solutions	Die cutting	Mail inserting	Numbering	Coating	Banding
BM4000 Booklet maker	■	■	■	■															
BM5000 Booklet maker	■	■	■	■															
PowerSquare™ 7000	■	■	■	■															
DigiFold Pro XL					■	■	■	■											
Ultra range					■	■	■	■				■							
DocuFold Pro, Junior DT-M / DT-A folders							■												
AutoCreaser Pro range						■													
SFT SquareFold trimmer	■	■	■	■					■										
AutoCut Pro / AeroCut X / AeroCut X Pro									■		■	■		■					
DigiBook PUR / Bourg Binder / EvaBind / Hotmelt	■	■	■	■						■									
Digicoater Pro 400																		■	
ColorFlare CF2000 / CF2500 Pro / Komfi Amiga / Matrix													■						
RDC / AeroDieCut die cutters												■		■	■				
ColorCut SC6500, SC7000 Pro ^T / SC7000 Pro ^T XL						■		■				■		■	■				
ColorCut FB580 / FB780 ^T / FB9500 ^T / FB1190 ^T flatbeds						■		■				■		■	■				
Comagrav flatbed cutter range						■		■				■		■	■				
Mailing Systems / Pitney Bowes Relay range																■			
Morgana Band-it																			■

The complete product line-up

Plockmatic Group has led the way in developing new and innovative solutions to cope with the special requirements of the digital printer. Whether you need to produce booklets with our comprehensive range of booklet makers, or bind documents with our DigiBook PUR binders to produce perfect bound books...or simply just fold, cut or crease - *we have a solution for all digital applications.*



 **+47 911 28 221**

Plockmatic Document Finishing AS | Grorudveien 55
Oslo 976 | Norway

E: fredrik.thorsen@plockmatic.com www.plockmaticgroup.com

www.plockmaticgroup.com

*Disclaimer As part of our continued product improvement plan, specifications and information published here are subject to change without notice. All specifications are dependent on application, type of stock, temperature, RH and print engine used. Specifications quoted were measured on uncoated and unprinted stock. E & OE. All products are subject to availability. Plockmatic Group recognise all trademarks and copyrights.

