



Plockmatic 50/35 sheet family **for Ricoh**
PBM500/350 and PBM500e/350e

Inline 50/35 sheet family

Finishing first.

Plockmatic Group develops, manufactures and markets an extensive range of document finishing systems sold under the Plockmatic and Morgana brand names. These products work inline or offline together with the world's best digital printing systems.

We make booklets. We also mail, fold, crease, perforate and bind documents with extraordinary precision. Quite simply, we turn stacks of printed paper into the beautifully finished documents you use every day.



The PBM family.

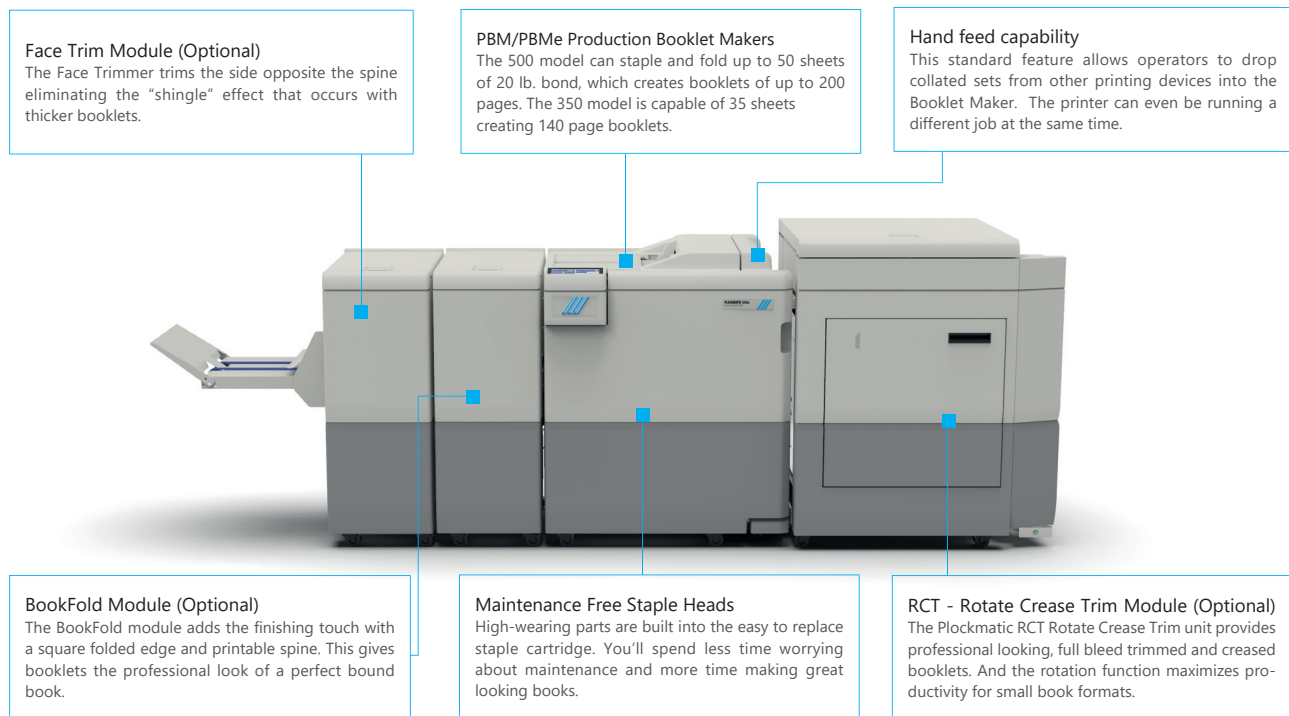
The Plockmatic 50 and 35 sheet systems are modular inline booklet making solutions for centralized reproduction departments and commercial print providers - large and small. Customers can choose from a range of cost-effective options to support their application requirements. The system is packed with a host of unique technologies that deliver finished books with quality to match Ricoh printing systems.

Customers are demanding more media versatility from digital print. The Plockmatic 50 and 35 sheet systems are designed from the ground up to work with today's coated, uncoated and textured paper stocks.

We work closely with Ricoh and workflow partners to ensure tight integration between the booklet making system and the printer. This supports ease of use and allows operators of different skill levels to get the most out of the entire printing system. Booklets are enhanced with the BookFold finish to provide the professional look and feel of a perfect bound book.

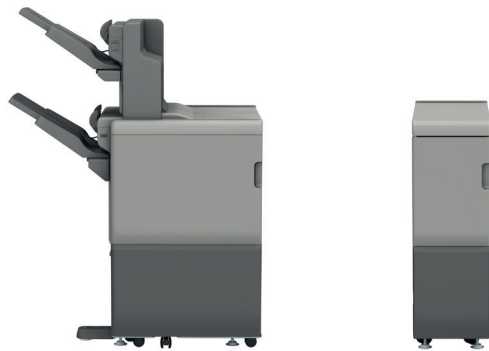


Inline 50/35 sheet family



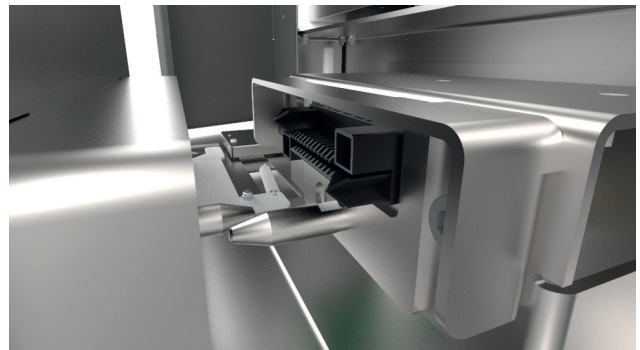
PBM500e & PBM350e. "e" as in Enhanced.

The new generation Ricoh Print engines opens up new possibilities for digital print providers. And the new Plockmatic PBM500e and PBM350e improve the use and flexibility of the printing system as a whole.



Expanded connectivity options.

Two new Ricoh modules are compatible with the latest Plockmatic PBM500e and PBM350e. The new SR5110 improves flexibility with the Plockmatic booklet maker by supporting the full media range to the upper tray – this makes booklet maker docking and undocking less frequent. The new BU5020 Bridge Unit acts as an interface to any upstream Ricoh module. Now, customers can choose to connect either to the Ricoh High Capacity Stacker or even to the printing system itself.



Easy docking and undocking.

A new cable-free docking connector between the booklet making system and the printer makes docking and undocking simple.

Technical Specifications

Booklet Maker

Paper Size (Min)	Width 8.1"
	Length 10.8"
Paper Size (Max)	Width 12.6"
	Length 18.0"
Stock Range	16 - 95 lb. Bond dependent on paper type and quality
Set Size (Stapled and folded 20 lb. Bond)	2-50 Sheets PBM500/PBM500e
	2-35 Sheets PBM350/PBM350e
Power Source	100-230V 50-60Hz
Power consumption	250W

Cover Feeder

Stock Range	16 - 70 lb. Bond
Loading Capacity	13/16" (approx 200 sheets of 20 lb. Bond)
Power Source	From Booklet Maker

Face Trim Module

Paper Size	Same as Booklet Maker
Minimum trimming	0.0394" *
Maximum trimming	1"
Power Source	From Booklet Maker

The Trimmer support "multi-cut" operation. This allows customers to create a 105 mm/4.13" long booklet cut down from a larger sheet size.

* When trimming SRA3 (450 mm) Booklets minimum trimming is 5 mm, when trimming 18" Booklets minimum trimming is 0.36".

RCT Rotate Crease Bleed Trim Module

Paper Size	Same as Booklet Maker
Minimum trimming	0.20" + 0.20" = 0.4"
Maximum trimming	1.18" + 1.18" = 2.36"
Asymmetrical trimming	Yes
Power Source	100-230V 50-60Hz

BookFold Module

Paper Size	Same as Booklet Maker
Set Size (Stapled and folded 20 lb. Bond)	Same as Booklet Maker
Power Source	From Booklet Maker

Compatibility PBM500/PBM350

Interfaces	SR5050
Print engines	Pro™ C7100/C7200 Series
	Pro™ C9100/C9200 Series
	Pro™ 8100/8200 Series

Compatibility PBM500e/PBM350e

Interfaces	SR5110
	BU5020
Print engines	Pro™ 8300 Series

Plockmatic 50/35 sheet family - machine footprint

